

Acoustic Monitoring Data Sheet



Person Completing Monitoring	W. Carter	Date	10/05/2025	Time	03.40am	Acoustic Monitoring location (Refer to overarching Map)	Please refer to appendix 1
Work Area	ActiDAFF Area & Batching Plant	Scope of Work	Concrete Pour	Is Construction Audible?	See field notes		
List Plant in operation	Concrete pump, Agi trucks, Lighting towers, Batching Plant						
Field Notes (Be specific to Acoustic graphs)	No construction works was audible from monitoring location 1 (closest sensitive receiver) pre or during batching or concrete pour. Weather Very placid morning with temperatures approx 14 degrees with little to no breeze during monitoring.						

Part A: Include Photos of Acoustic Monitoring location & Works –

Please refer to appendix 1 & 2.

Acoustic Summary Table

Monitoring location	Date	Distance of Monitoring locations from closest sensitive receiver (m)	Pre concrete (LAeq)	Time	Batching Concrete (LAeq)	Time	During Concrete Pour (LAeq)	Time	Acoustic Threshold (dB)	Compliant with Acoustic threshold
1	10/05/2025	20	30.2	03.48am	33.2	05.04am	36	06.51am	43	Yes
2	10/05/2025	524	48.8	04.13am	56.8	05.29am	56.7	07.25am	43	N/A





Acoustic results from location 1 during the 3 monitoring periods pre and during batching concrete and placement of concrete was well below the acoustic threshold. No construction related works was audible at any point during each monitoring period. There was a slight increase in decibels from pre works @3:48am till during concrete pour @06:51am, which was down to more local movements of vehicles and people. additionally there was an increase in birds in the trees to the north of the monitoring location.

Acoustic results from location 2 was not obtained at the the closest sensitive receiver therefore results are not applicable to the acoustic threshold in a accordance with Out of Hours Approvals from City of Wanneroo (LGA).

Appendix 1 - Acoustic Monitoring Locations & Work Areas

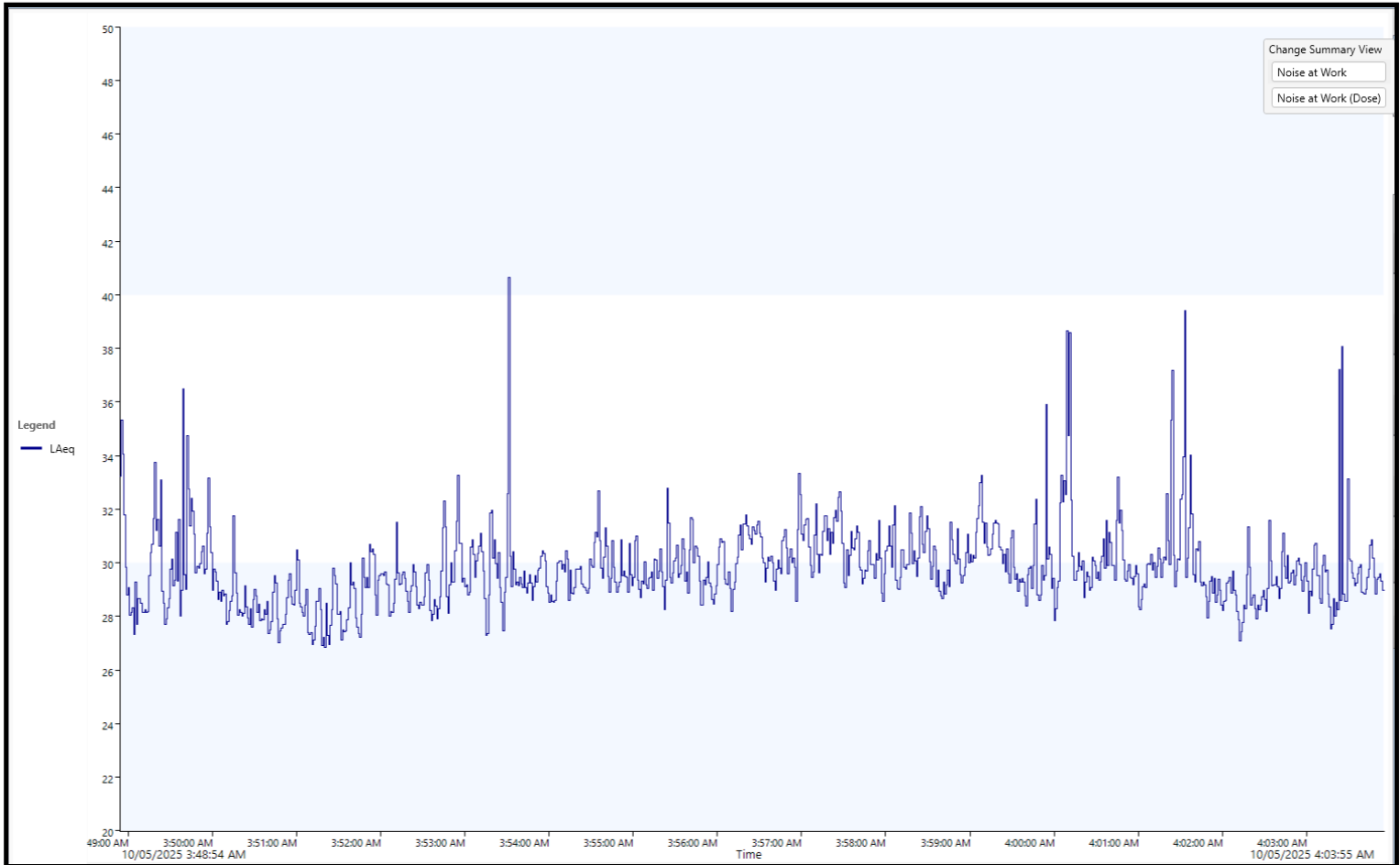


Legend

Monitoring location 1	
Monitoring location 2	
Concrete Pour Area	
Concrete Batching area	

Appendix 2 - Acoustic Results

Monitoring Location 1 - Pre Concrete batching & pour



12/05/2025

Measurement Summary Report

Name 206
Time 10/05/2025 3:48:54 AM **Person** William Carter **Place** ActiDAFF Concrete **Project** Alkimos Desalination
Duration 00:15:00
Instrument G305002, CR:162C

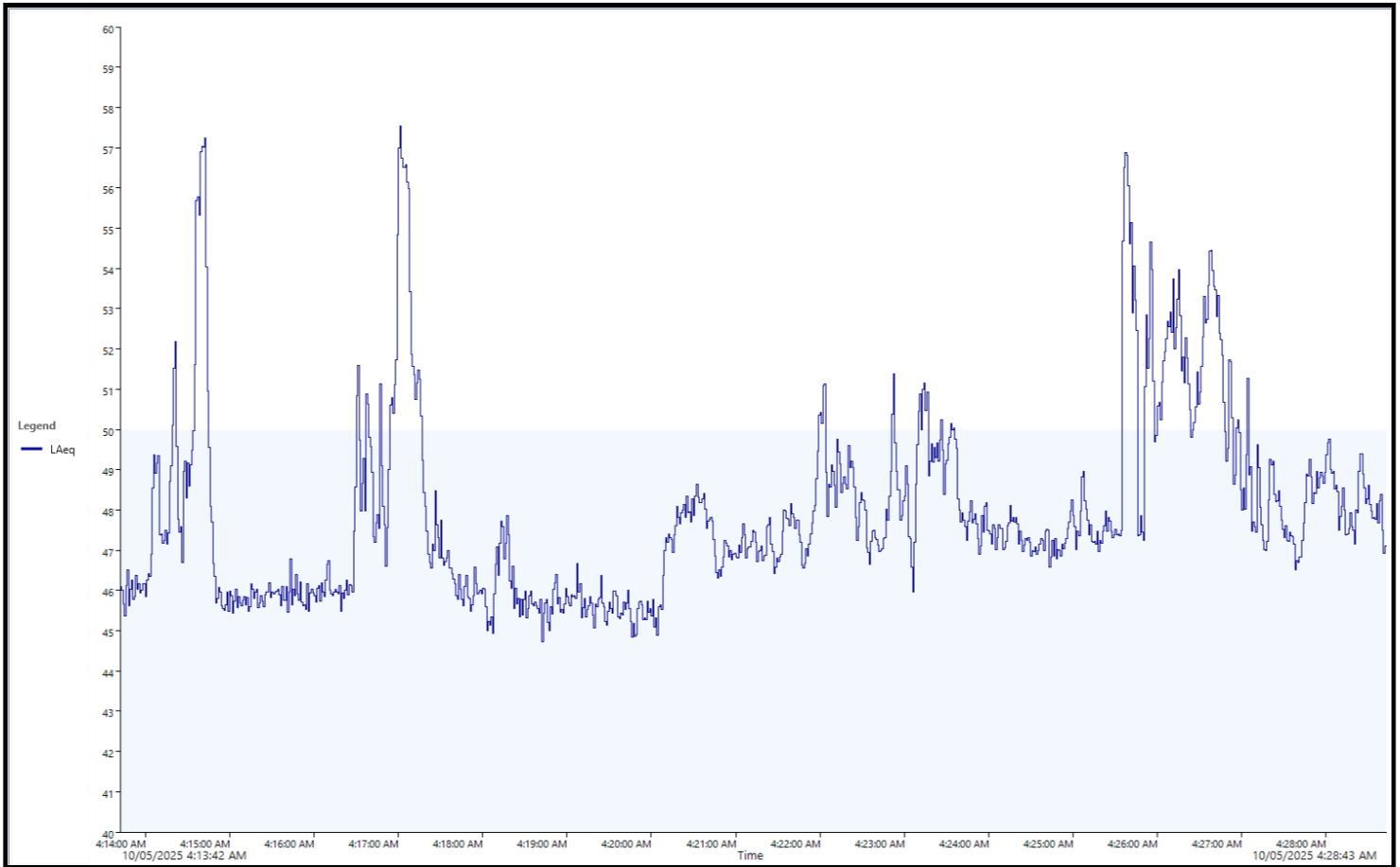
Calibration
Before 6/05/2025 10:13 AM **Offset** -1.96 dB **After** **Offset**

Basic Values		Projected Exposure	
LAeq	30.2 dB	30 Minutes	18.2 dB
LCPeak	75.8 dB	1 Hour	21.2 dB
C-A	17.6 dB	2 Hours	24.2 dB
LEX8	15.2 dB	4 Hours	27.2 dB
LAFMax	48.8 dB	6 Hours	29.0 dB
		8 Hours	30.2 dB
		10 Hours	31.2 dB
		12 Hours	32.0 dB

ReportId

MB4470100000008 Cirrus Research NoiseTools Page 1 of 1

Monitoring Location 2 - Pre Concrete batching & pour



12/05/2025

Cirrus
Research plc

Measurement Summary Report

Name 207
Time 10/05/2025 4:13:42 AM **Person** William Carter **Place** ActiDAFF Concrete **Project** Alkimos Desalination
Duration 00:15:00
Instrument G305002, CR:162C

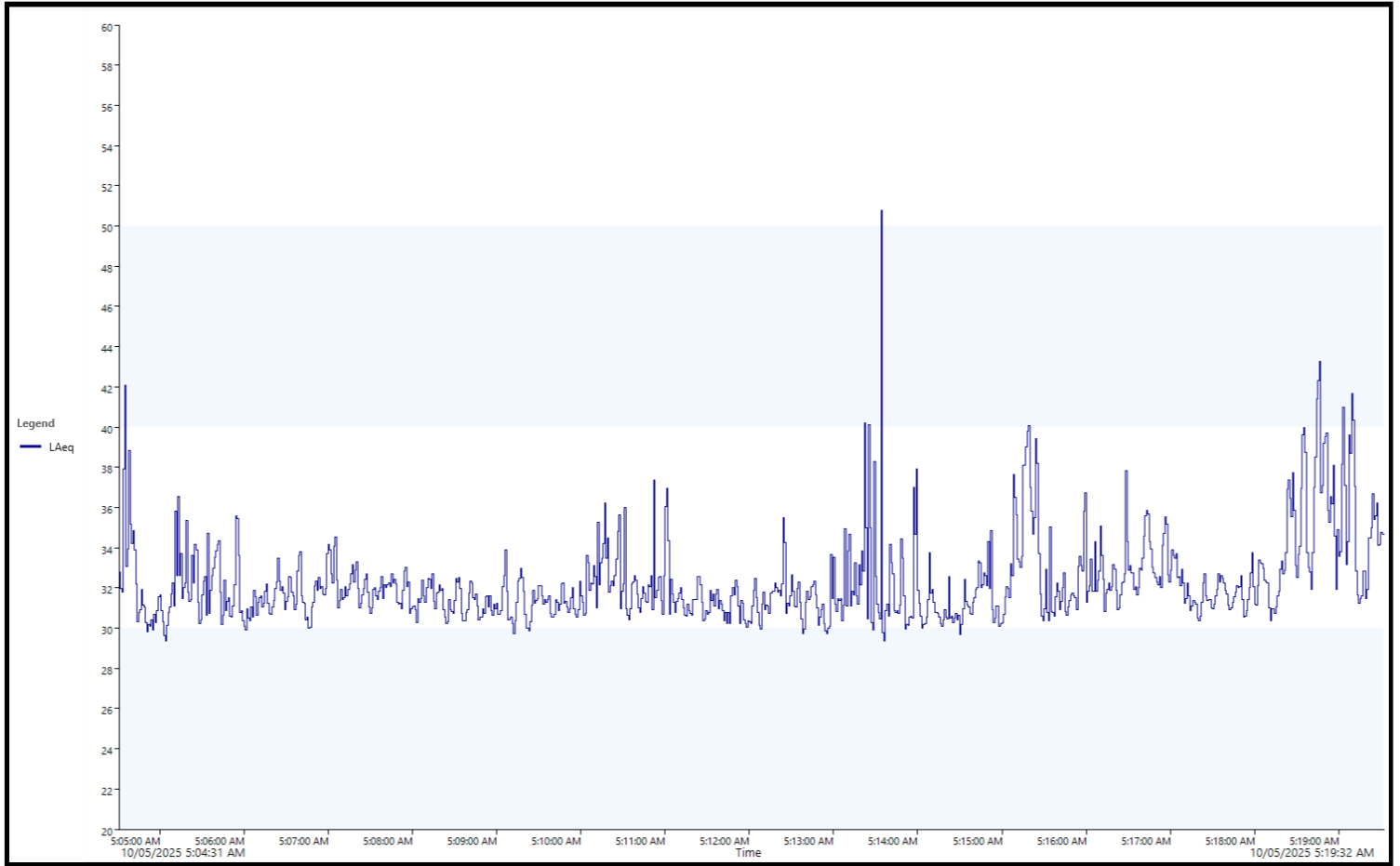
Calibration
Before 6/05/2025 10:13 AM **Offset** -1.96 dB **After** **Offset**

Basic Values		Projected Exposure	
LAeq	48.8 dB	30 Minutes	36.8 dB
LCPeak	85.9 dB	1 Hour	39.8 dB
C-A	20.3 dB	2 Hours	42.8 dB
LEX8	33.8 dB	4 Hours	45.8 dB
LAFMax	59.9 dB	6 Hours	47.6 dB
		8 Hours	48.8 dB
		10 Hours	49.8 dB
		12 Hours	50.6 dB

ReportId

MB4470100000009 Cirrus Research NoiseTools Page 1 of 1

Monitoring Location 1 - During Concrete Batching



12/05/2025

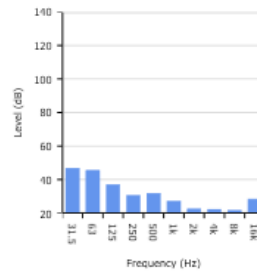
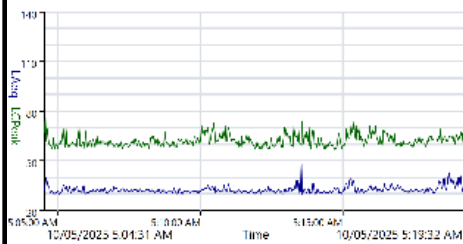


Measurement Summary Report

Name 208
Time 10/05/2025 5:04:31 AM **Person** William Carter **Place** ActiDAFF Concrete **Project** Alkimos Desalination
Duration 00:15:00
Instrument G305002, CR:162C

Calibration
Before 6/05/2025 10:13 AM **Offset** -1.96 dB **After** Offset

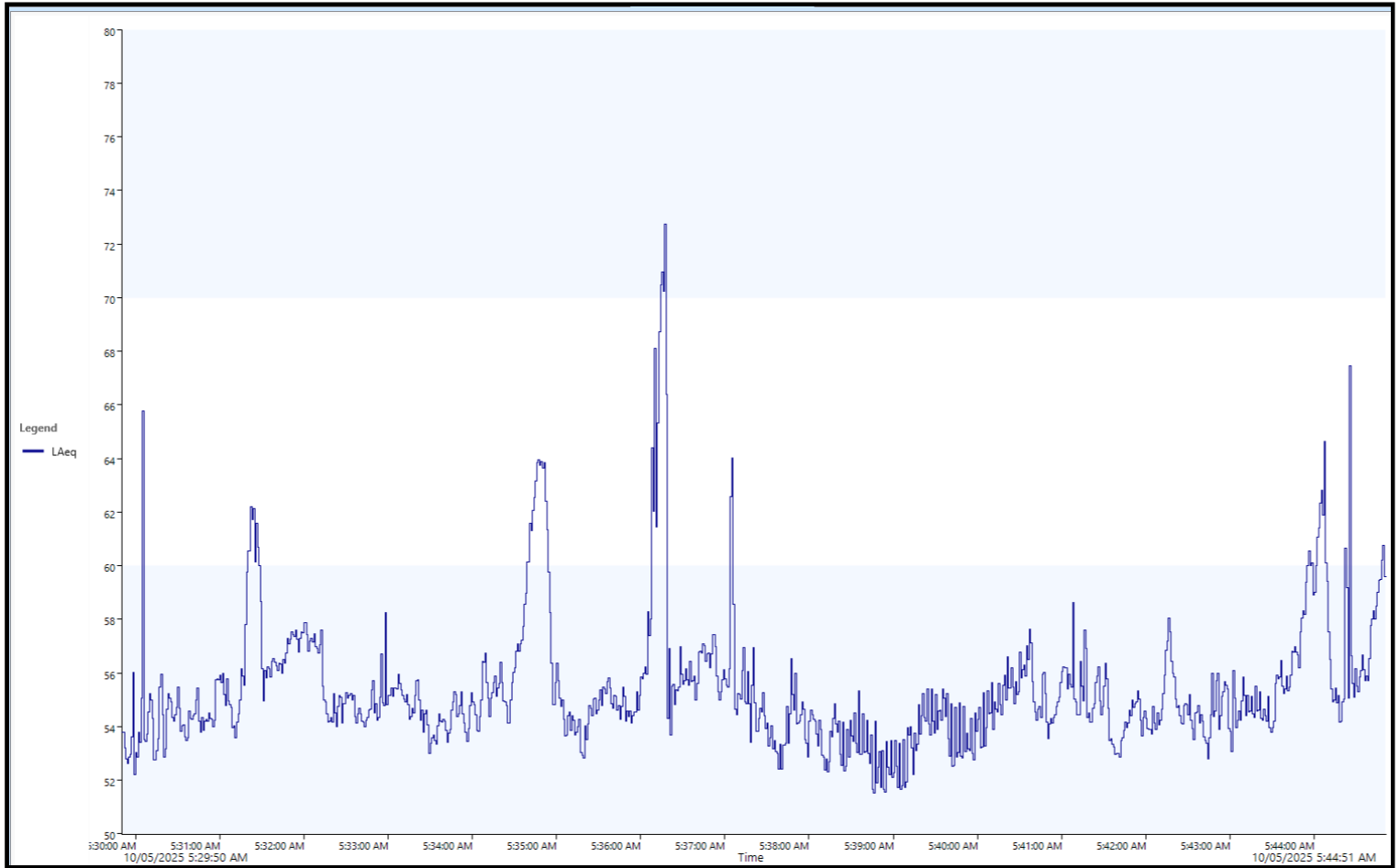
Basic Values		Projected Exposure	
LAeq	33.2 dB	30 Minutes	21.2 dB
LCPeak	75.8 dB	1 Hour	24.2 dB
C-A	17.7 dB	2 Hours	27.2 dB
LEX8	18.2 dB	4 Hours	30.2 dB
LAFMax	58.4 dB	6 Hours	32.0 dB
		8 Hours	33.2 dB
		10 Hours	34.2 dB
		12 Hours	35.0 dB



ReportId



Monitoring Location 2 - During Concrete Batching



12/05/2025

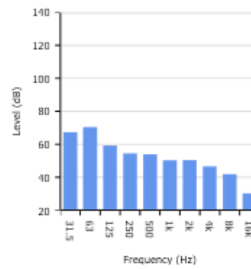
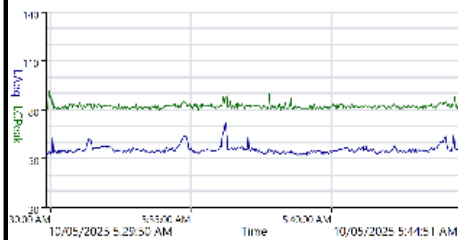


Measurement Summary Report

Name 209
Time 10/05/2025 5:29:50 AM **Person** William Carter **Place** ActIDAFF Concrete **Project** Alkimos Desalination
Duration 00:15:00
Instrument G305002, CR:162C

Calibration
Before 6/05/2025 10:13 AM **Offset** -1.96 dB **After** Offset

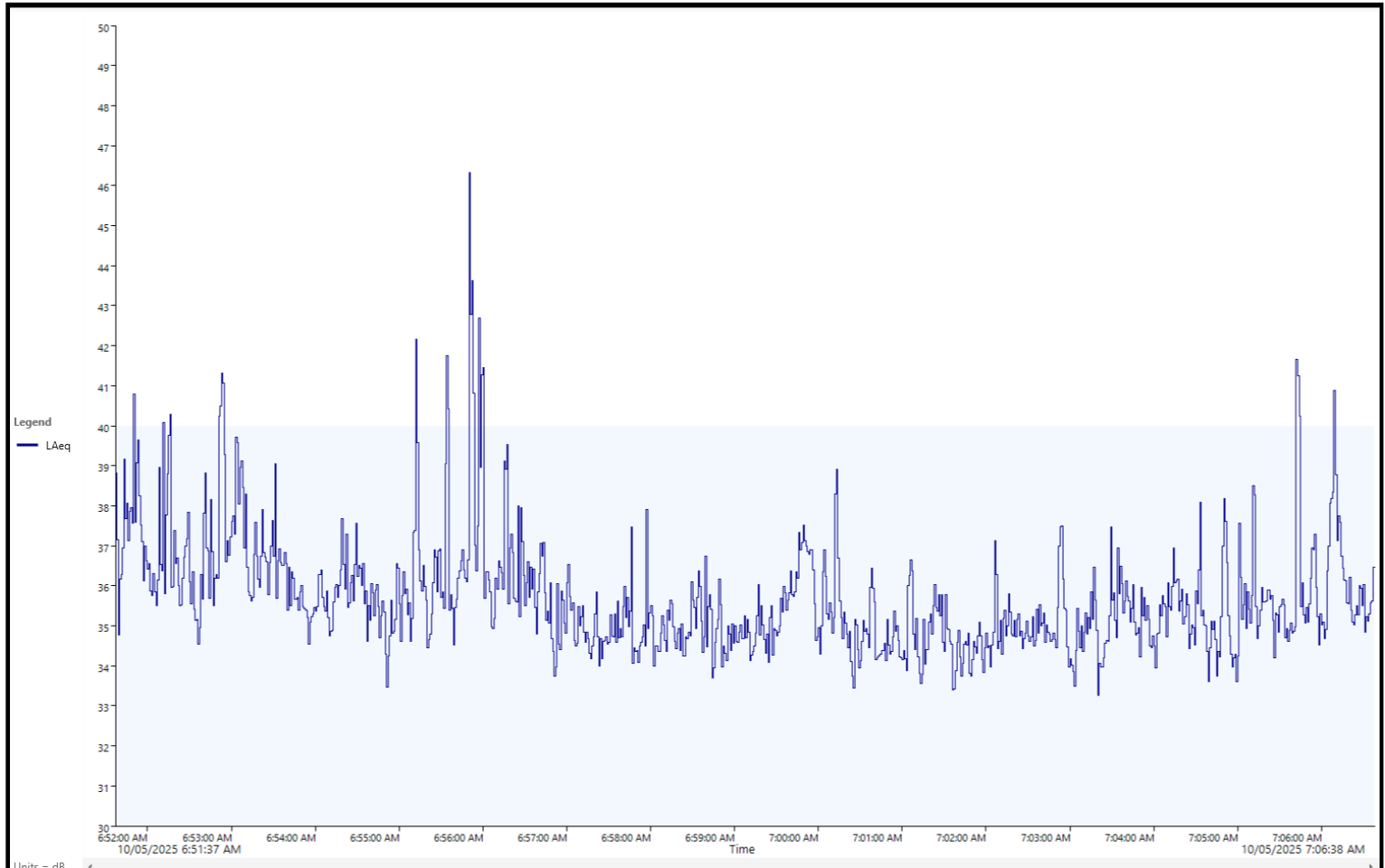
Basic Values	Projected Exposure
LAeq 56.8 dB	30 Minutes 44.8 dB
LCPeak 91.9 dB	1 Hour 47.8 dB
C-A 14.3 dB	2 Hours 50.8 dB
LEX8 41.8 dB	4 Hours 53.8 dB
LAFMax 75.0 dB	6 Hours 55.6 dB
	8 Hours 56.8 dB
	10 Hours 57.8 dB
	12 Hours 58.6 dB




ReportId



Monitoring Location 1 - During Concrete pour



12/05/2025




Measurement Summary Report

Name	210				
Time	10/05/2025 6:51:37 AM	Person	William Carter	Place	ActiDAFF Concrete
Duration	00:15:00			Project	Alkimos Desalination
Instrument	G305002, CR:162C				

Calibration					
Before	6/05/2025 10:13 AM	Offset	-1.96 dB	After	Offset

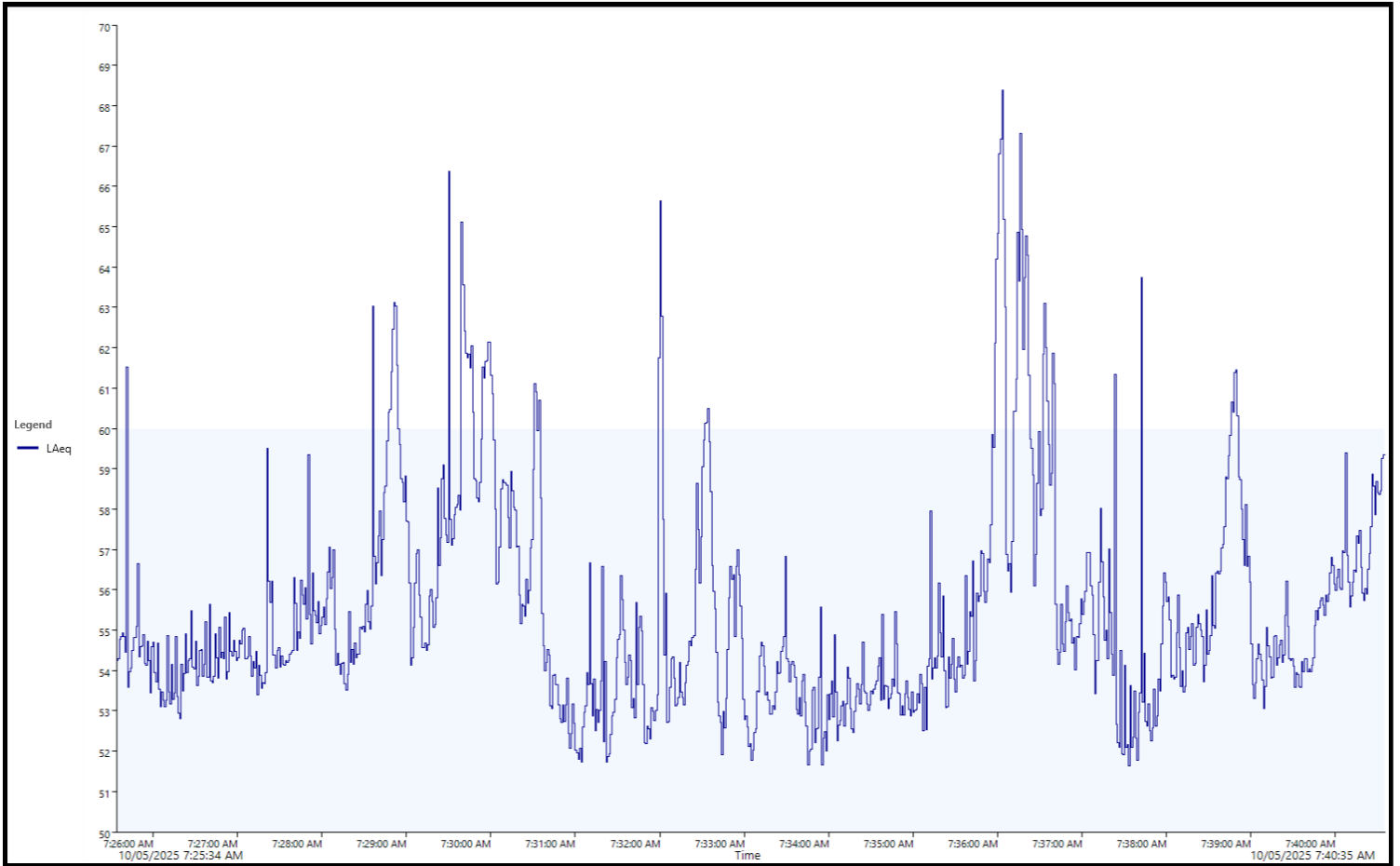
Basic Values		Projected Exposure	
LAeq	36.0 dB	30 Minutes	24.0 dB
LCPeak	68.9 dB	1 Hour	27.0 dB
C-A	15.8 dB	2 Hours	30.0 dB
LEX8	21.0 dB	4 Hours	33.0 dB
LAFMax	51.5 dB	6 Hours	34.8 dB
		8 Hours	36.0 dB
		10 Hours	37.0 dB
		12 Hours	37.8 dB

ReportId



MB447010000000C
Cirrus Research NoiseTools
Page 1 of 1

Monitoring Location 2 - During Concrete pour



12/05/2025

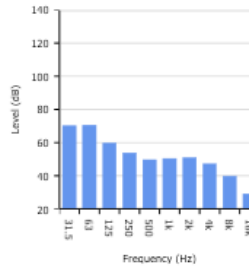
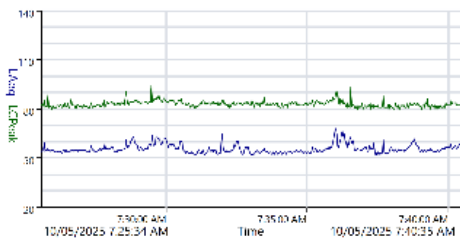


Measurement Summary Report

Name 211
Time 10/05/2025 7:25:34 AM **Person** William Carter **Place** ActiDAFF Concrete **Project** Alkimos Desalination
Duration 00:15:00
Instrument G305002, CR:162C

Calibration
Before 6/05/2025 10:13 AM **Offset** -1.96 dB **After** **Offset**

Basic Values		Projected Exposure	
LAeq	56.7 dB	30 Minutes	44.7 dB
LCPeak	93.8 dB	1 Hour	47.7 dB
C-A	15.6 dB	2 Hours	50.7 dB
LEX8	41.7 dB	4 Hours	53.7 dB
LAFMax	70.7 dB	6 Hours	55.5 dB
		8 Hours	56.7 dB
		10 Hours	57.7 dB
		12 Hours	58.5 dB



ReportId

