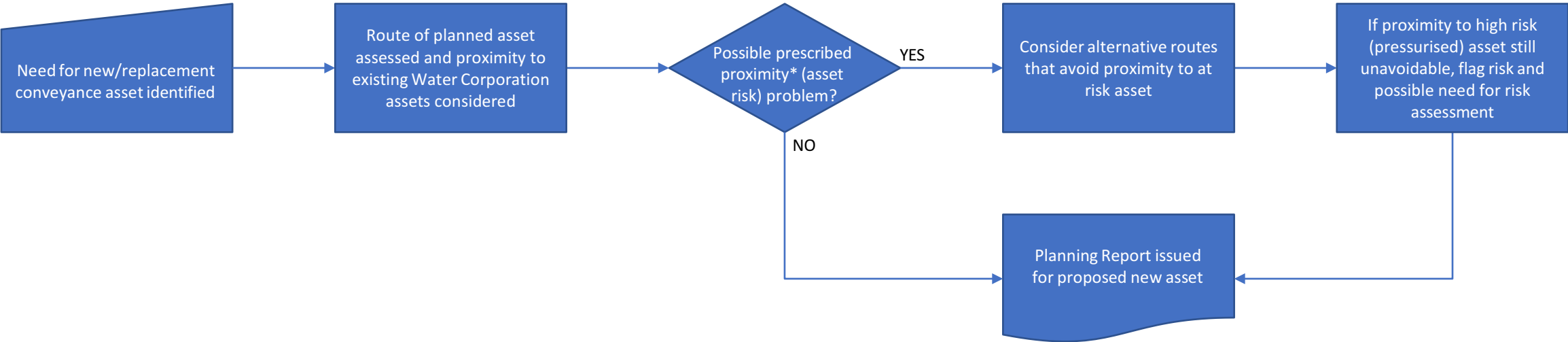


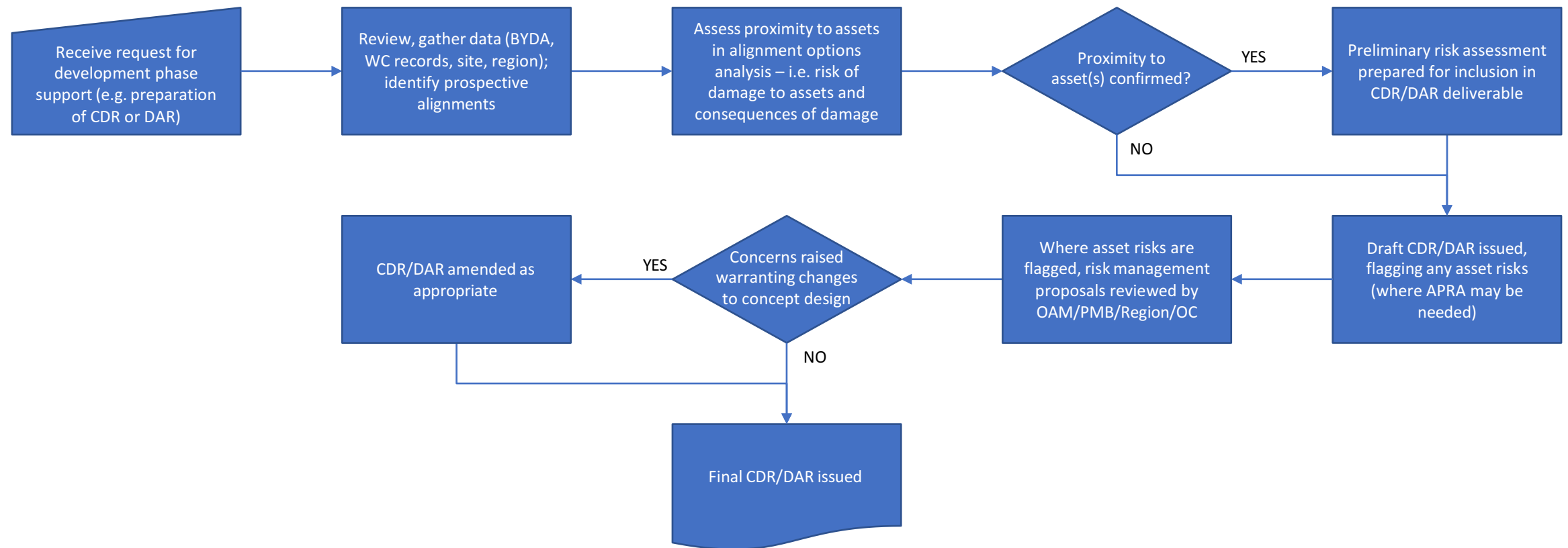
Planning Phase



\* See page 5 for definition

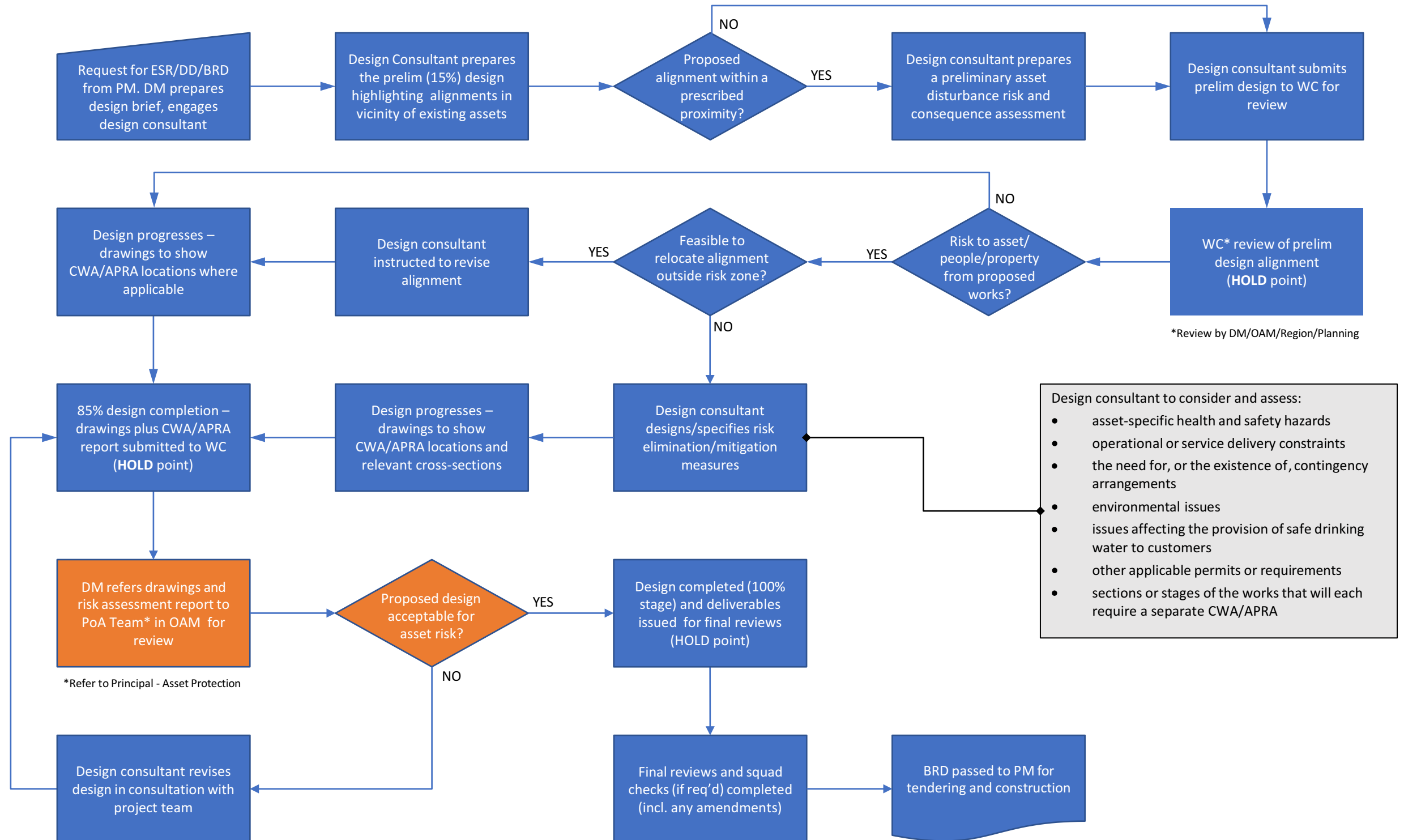
## CWA/APRA Process through Planning, Engineering & Delivery

### Development Phase



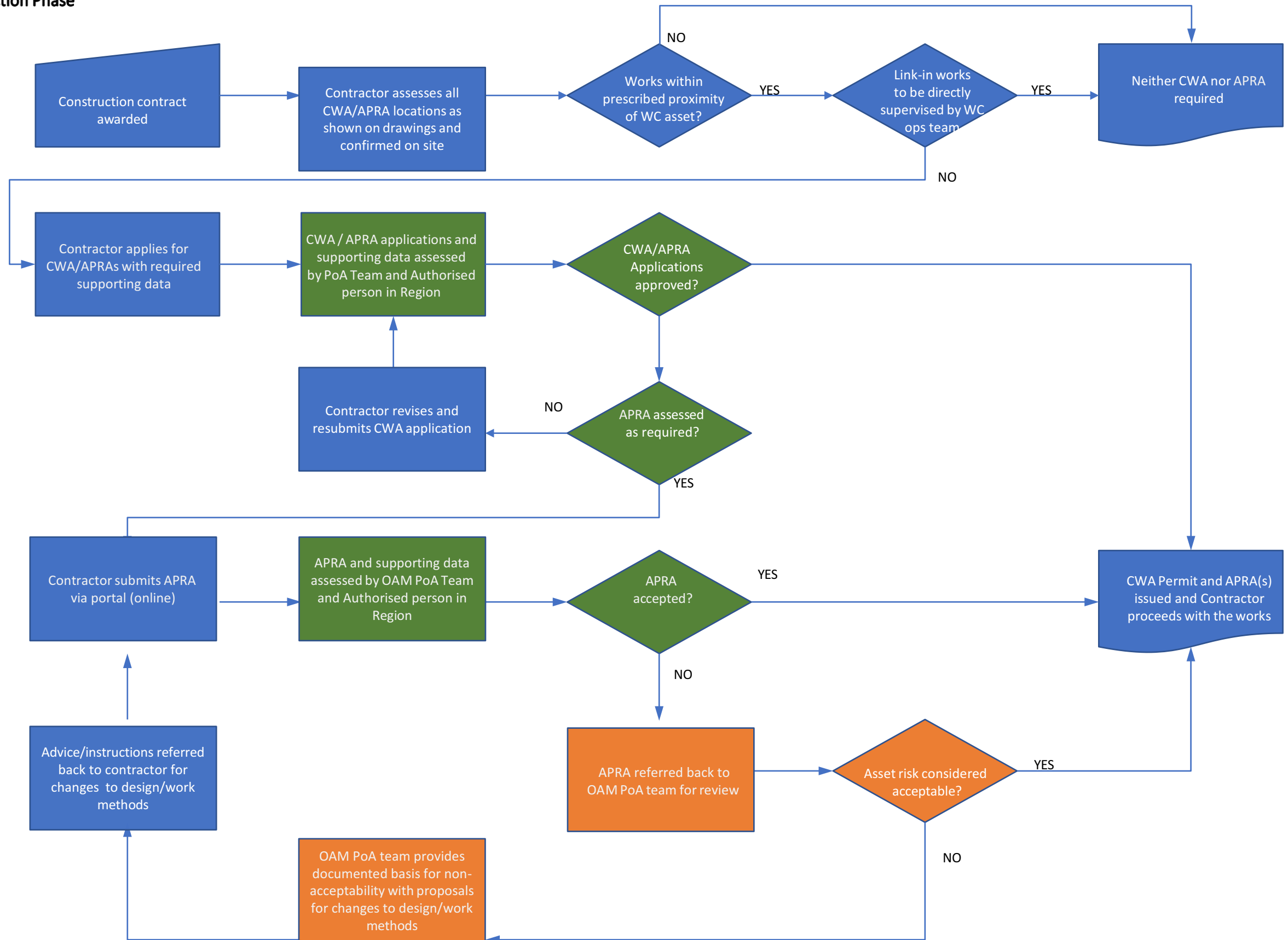
# CWA/APRA Process through Planning, Engineering & Delivery

## Engineering/Design Phase



# CWA/APRA Process through Planning, Engineering & Delivery

## Construction Phase



## Summary of Prescribed Proximities

Section 90 of the *Water Services Act 2012*, requires that a person must not disturb the ground within the prescribed proximity to water service works (assets) owned or controlled by the licensee (Water Corporation). Prescribed proximity values are nominated in *Water Services Regulations 2013*. A “person” means an individual person, or a corporate entity (e.g. company, government agency, local authority).

Table 2 of “Technical Guidelines for safely working near Water Corporation assets”:

Type of works	Asset type	Asset size	Prescribed proximity (distance from the asset)
<b>Ground disturbing works</b> Including movement of heavy vehicles, ground compaction, dewatering, earthworks, open and trenchless excavations	<b>Sewer pipelines</b>	All	2 m
	<b>Main drains</b>	All	
<b>Ground disturbing works</b>	<b>Water supply pipelines</b>	< 300 mm diameter	4 m
<b>Ground disturbing works</b>	<b>Water supply pipelines</b>	≥ 300 mm diameter	6 m
	<b>Sewer pressure mains</b>	All	
	<b>Drainage pressure mains</b>	All	
<b>Buildings, structures and other obstructions</b> Including residential/commercial/industrial buildings, pools, sheds, carports, major developments, transport infrastructure, services, installed equipment, stockpiles, ground anchors, large trees	<b>All assets</b>	All	10 m both sides of asset 15 m above & below the asset
<b>Pile driving</b>	<b>All pipelines</b>	All	100 m
<b>Blasting</b>	<b>All pipelines</b>	All	1,000 m