

Environmental Impacts

Osborne Park drainage upgrades



Our environmental approach

While planning for the Osborne Park drainage upgrades an environmental impact assessment of the area was undertaken by environmental specialists based on the original scope of the project. These assessments were provided to the project team to assist with creating an environmental management strategy to minimise environmental impacts during our work. The strategy outlines what actions need to be undertaken in regards to fauna management and relocating, flora management and vegetation clearing, waste management, erosion and sedimentation, air quality, environmental incidents and hazards, traffic, public safety, noise and more.

It is a primary objective of every Water Corporation project to avoid or minimise environmental impact during construction as much as practicable. Our goal is to balance safety, cost and environmental impact. It is important that we find the correct balance of all three while ensuring we can provide water management services and infrastructure to the community.

Georgiou, as our authorised contractor is equally committed to complying with all environmental requirements during construction works to align with this vision. As the project progresses, the environmental team and external specialists will complete ongoing reviews and audits and provide expert advice.

Impacts on local wildlife

To reduce the impact on wildlife, work along the drain will occur in stages. Georgiou will section off each area in succession, slowly reduce the water level to allow aquatic species and birds to naturally move to non-construction areas before construction work begins. During work, fauna handlers will continue to actively inspect and relocate any fauna species away from the construction site as required.

Once the work is complete, the drain will be reopened allowing aquatic and bird species to disperse and repopulate areas.

Impacts on vegetation

Stage 1

In the first stage of this work it was necessary to clear trees on Water Corporation land near Pearson Street to install new infrastructure, and to allow space for construction and future maintenance. All tree and vegetation removals were carried out in line with all necessary regulatory approvals in place.

Our authorised contractor will revegetate the area north of Pearson Street by planting trees, shrubs and ground cover seedlings that are native to the Swan Coastal Plain. More information about the revegetation plan can be found on the [Revegetation Plan update](#).

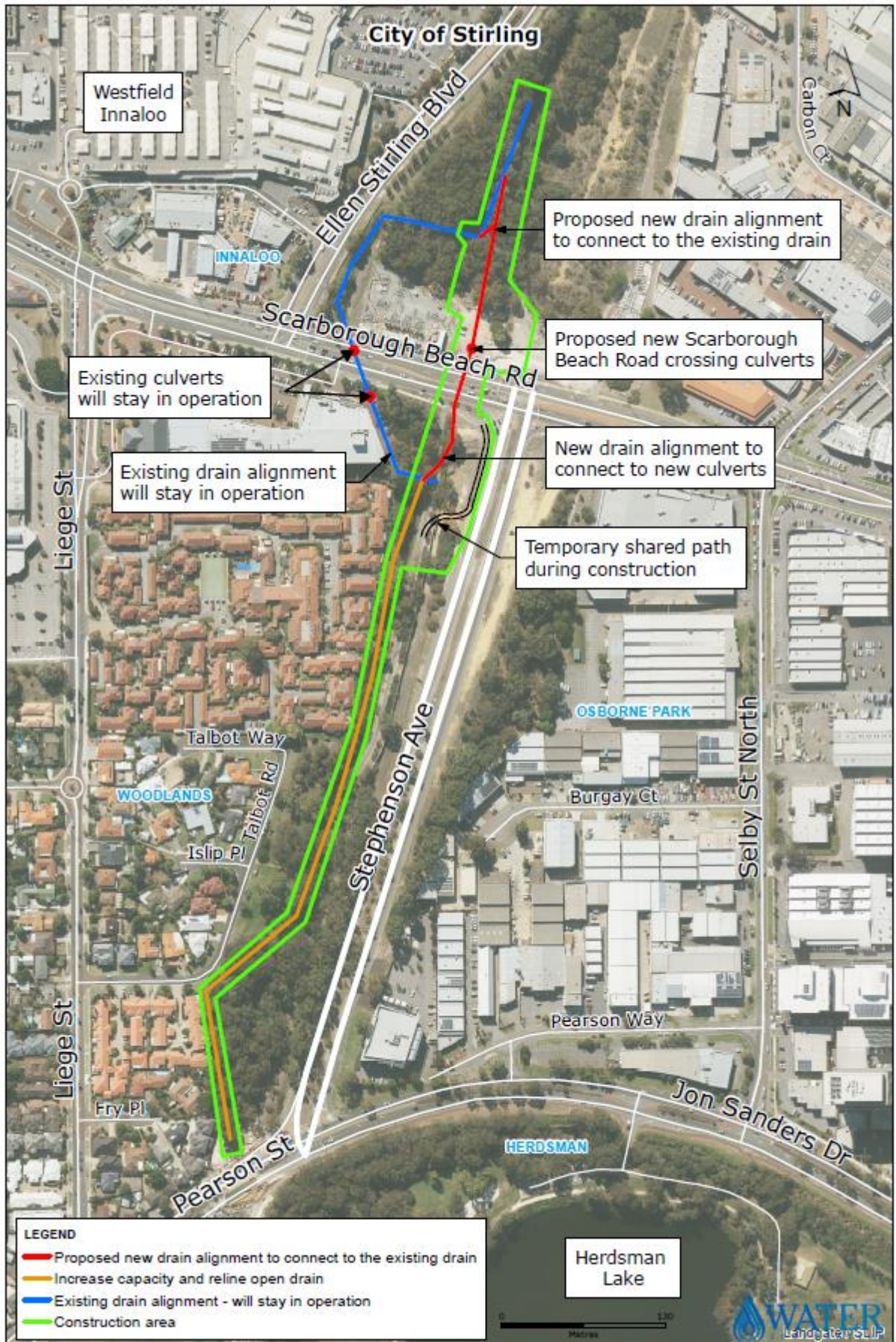
Due to construction delays during stage 1, the revegetation work that was scheduled for October-November 2020 has been postponed until winter 2021. The cooler temperatures will give the new vegetation a better opportunity to successfully establish.

Stage 2

Please refer to the map over the page showing the construction area and the proposed work.

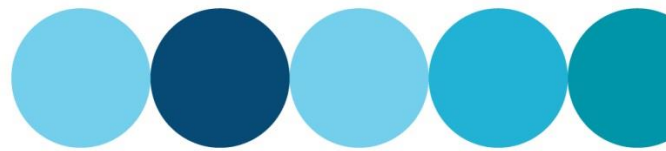
Environmental Impacts

Osborne Park drainage upgrades



Environmental Impacts

Osborne Park drainage upgrades



In reference to the map on the previous page, the vegetation along the open drain between Scarborough Beach Road and Pearson Street **highlighted in orange** has been assessed by independent arborists based on environmental value, safety, and location. Eleven trees from the 100 trees that were surveyed have been identified as requiring removal. Several more trees will also be pruned for safety reasons.

Examples of trees that will require clearing or pruning can be seen in the images below.



Sections of vegetation including large trees and ground coverings along the new drain alignment north and south of Scarborough Beach Road **highlighted in red** is required to be cleared to install the new infrastructure.

Vegetation will be removed with all necessary approvals in place.

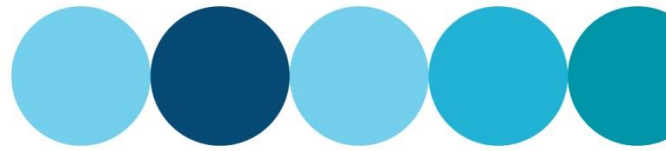
There is currently no revegetation planned for the area along the new drain alignment, as access will be kept clear for future maintenance and to allow for planned urban development in the area.

What will be involved in relining the open drain?

Once the water is drained, sediment and sludge known as silt at the bottom of the drain will be exposed which may cause a strong odour. Georgiou will do what they can to minimise odour by treating and removing the silt as quickly as possible.

Environmental Impacts

Osborne Park drainage upgrades



The open drain will be cleared of debris and water-based vegetation such as reeds. The drain will then be deepened and relined to improve water flow. This will increase the capacity of the drain to minimise flooding issues and allow the drain system to cope with growth in urban development.

A rock wall lining will be built over the current wooden panel lining to secure the banks and create the correct slope for effective water runoff.

The rock wall will be built around the base of trees that cause no safety concern. This will secure the roots and keep the drain clear. →



Who can I contact for more information?

For further information on the environmental impacts of this project please contact Water Corporation Community Engagement Advisor, Kate Lee by email at Kate.Lee@watercorporation.com.au or call 0476 810 379.

If you need to report a fault, emergency or security issue, please call our 24 hour line on 13 13 75.