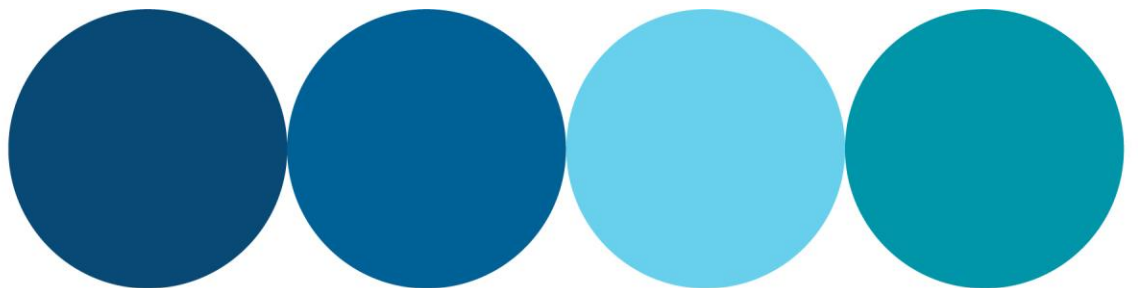


Community consultation on Goldfields pipeline replacement

Results from consultation on how Water Corporation should use retired sections of the pipe





Contents

Background	1
Consultation process	1
Survey	1
Submissions	1
Meetings	2
Public notices / newspaper advertising	2
Social Media	2
Results	2
Survey	2
Quantitative response results	2
Qualitative response results (Open-text responses)	6
Other written submissions	9
Attachment 1: Survey	13
Attachment 2: Public Notice in local papers	24
Attachment 3: Public Notice in community newsletter/ Posters sent to local governments for placement on community notice boards	25
Attachment 4: Article in Kalgoorlie Miner	26
Attachment 5: Letter to local governments	27
Attachment 7: Letter to other external stakeholders	30
Attachment 8: Posts by Local Government Facebook pages	33
Attachment 9: Summary of stakeholders contacted by letter	34



Background

The Goldfields Pipeline is over 115 years old. Completed in 1903, it spans 566 kilometres between Mundaring and Kalgoorlie. Some sections will require upgrades in the near future to ensure water supply integrity.

The pipeline is included on the National Heritage List (among 15 other components of the goldfields water supply) which means the removal of older sections requires referral to the Federal Department of Environment and Energy (DEE) for potential assessment under the Environment Protection and Biodiversity Conservation Act 1999 (EPBC Act Cth).

Community input was sought to ensure the proposal for retired sections of the pipe includes ways that will benefit the community and celebrate the historical significance of the pipe.

Consultation process

Community consultation was undertaken between 25 October and 6 December 2018.

Given the geographical remoteness and diversity of potentially interested stakeholders a number of engagement methods were utilised in this process to provide people with choice and convenience.

An online platform was the preferred method for engagement due to flexibility and quality of reporting tools. Engagement HQ (EHQ) was used as the primary hub of information for the public and included an invitation to complete a survey (attachment 1) and the ability to ask questions of the projects Engagement Officer. Relevant links to Department of Environment and Energy and National Trust were also made available. All communications directed readers to visit the link: yoursay.watercorporation.com.au/goldenpipeline.

Submissions were invited through a number of other channels including:

- Public notices in local newspapers (Attachment 2)
- Public notice in community newsletters (Attachment 3)
- Newspaper article (media story) (Attachment 4)
- Letters and emails to Local Governments along the pipeline route (Attachment 5)
- Letters and emails to other key stakeholders who utilise or celebrate the pipeline (Attachment 6)
- Posters sent to local governments for placement on community notice boards (Attachment 3)
- Posts to the community by Local Government Facebook pages (Attachment 7)

Survey

An online survey was developed to capture community ideas and sentiment around the upgrade of the pipe and possible uses for retired sections. It comprised 14 questions to collect both quantitative and qualitative data and was estimated to take respondents around 10 minutes to complete.

Submissions

Written submissions were also invited from the public as an alternative to the survey, which could be emailed or posted in.



Meetings

LGAs along the pipeline were contacted in person or over the phone to provide a briefing on the proposed upgrade work. LGAs were asked to assist by making hard copies of the survey available at their offices, sharing the EHQ link and providing their own submissions, should they like to do so.

Public notices / newspaper advertising

In order to consult with the broader community, a number of advertising strategies were used.

A public notice was placed in the following publications the week of 5 November 2018:

- The Westonian (Westonia Community Resource Centre news)
- The Bandicoot (Cunderdin Community Resource Centre news) x 2
- The Avon Valley Advocate
- Hills Echo
- Kalgoorlie Miner

An article on the consultation was also printed in the Kalgoorlie Miner on 17 November 2018 (Attachment 4).

Social Media

Local Governments were asked to share the link to our EHQ page. Shire of Mundaring and Shire of Merredin confirmed they did this and the posts were shared to other community pages on Facebook as a result.

Results

Survey

The survey link was active on the EHQ page between 25 October and 30 November. The page itself received over 230 visits however only 18 responses were received, which is a very low response rate given the level of advertising that took place. We believe this is likely a reflection that people visiting the EHQ page understood the explanation of this project and were comfortable with the proposal to repurpose and retain sections of the pipeline. The responses received are captured below.

A copy of the survey is included at **Attachment 1**.

Quantitative response results

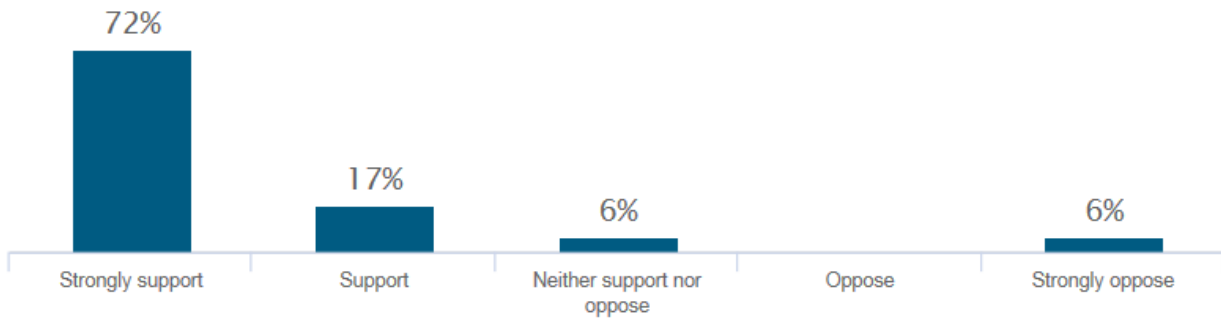
The following graphs indicate the responses to quantitative survey questions.

Question 1: “How do you feel about this idea of retaining sections of the aboveground pipeline in selected geographic areas?”

There is strong support for retaining certain sections of the above ground pipeline, as shown in Figure 2, with a large majority of respondents indicating their strong support.



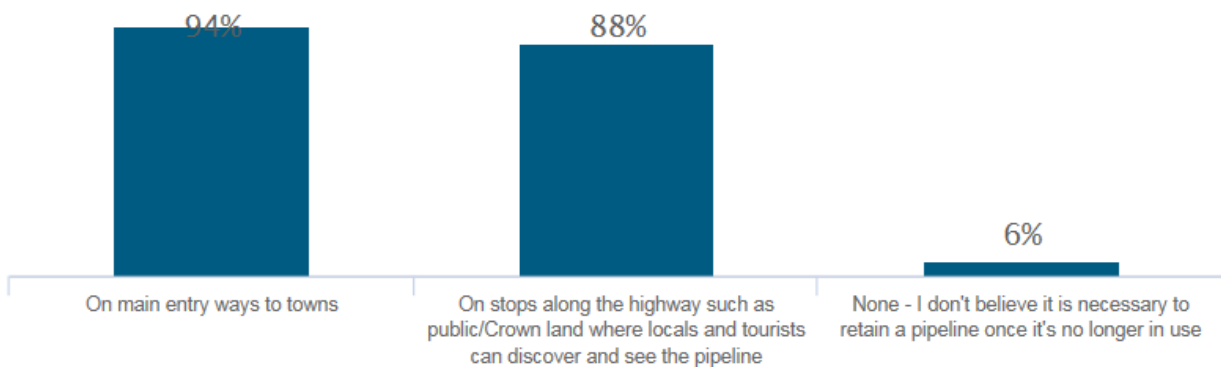
Figure 1: Responses to Question 1.



Question 3: “Which parts of the pipeline would you like to see retained?”

The most popular location for retention is main entryways into towns, closely followed by stops along the highway where the public and tourists can view it (as in Figure 3).

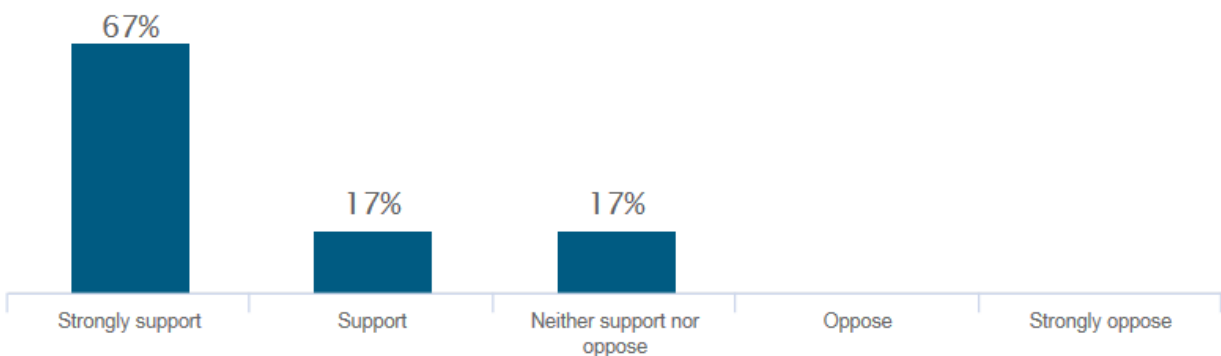
Figure 2: Responses to Question 3.



Question 5: “How do you feel about this idea of repurposing and showcasing sections of the pipeline in the community?”

There are very similar levels of support for repurposing the pipe to showcase it within the communities it passes through when compared to support for retention (as seen in figure 2).

Figure 3: Responses to Question 5

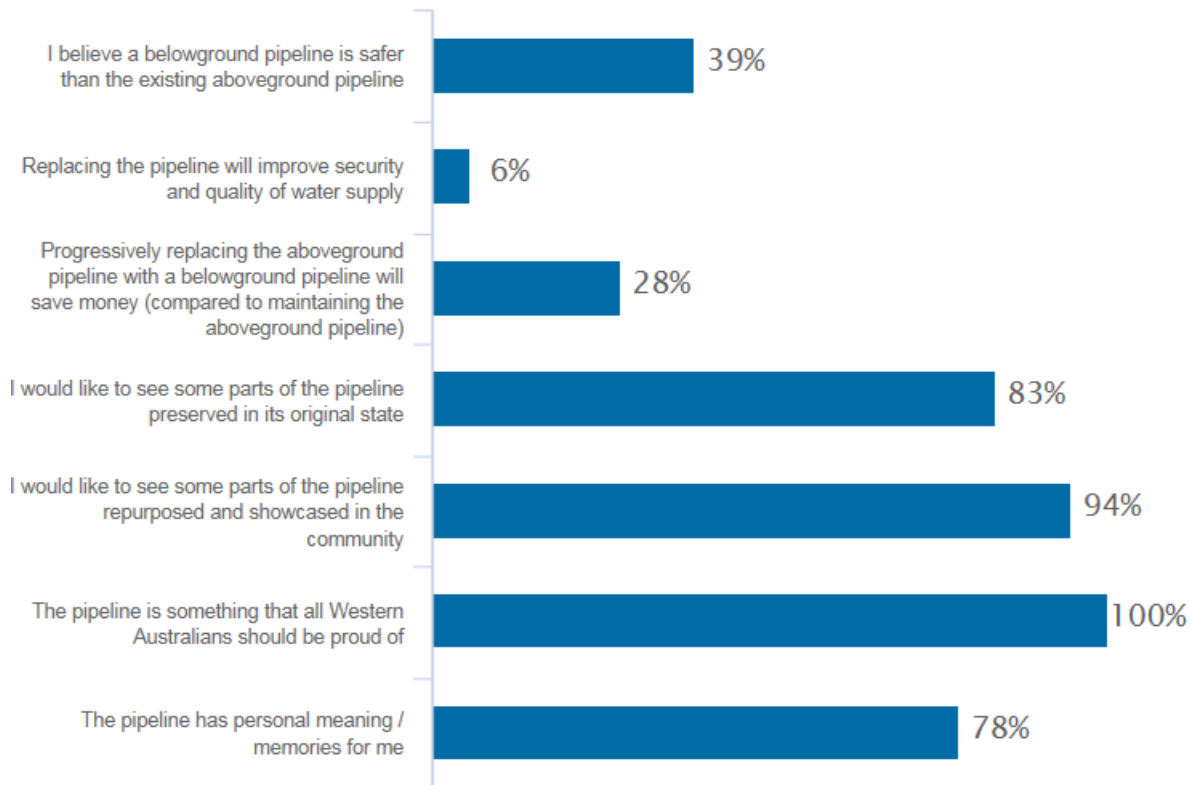




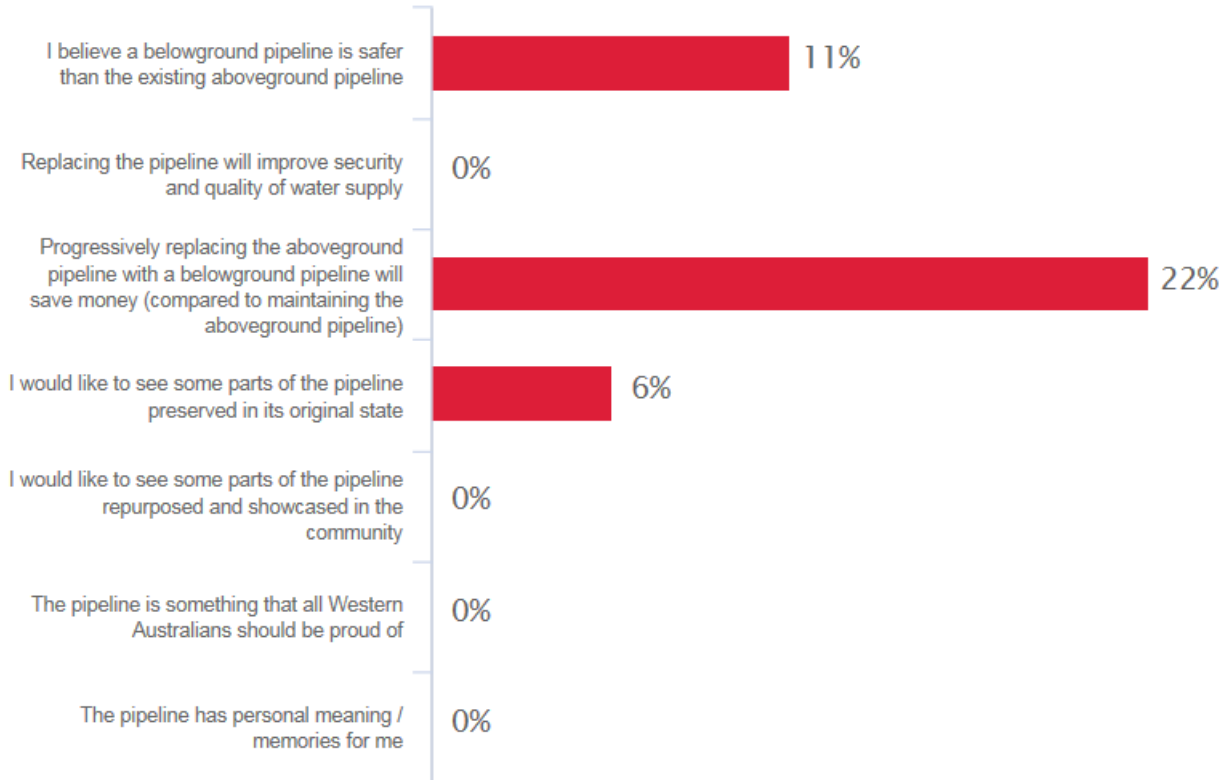
Question 8: “How do you feel about each of these statements?”

Although a comparison of figures 1 and 3 indicates a slightly higher level of support for retention of pipe in-situ, Figure 4 shows higher level of support for repurposing pieces of retired pipe compared to maintaining pipe in-situ.

Figure 4: Attitudes towards development of the Golden Pipeline from responses to Question 8



The graph above shows the percentages of respondents that agree or strongly agree with the statements on the left.

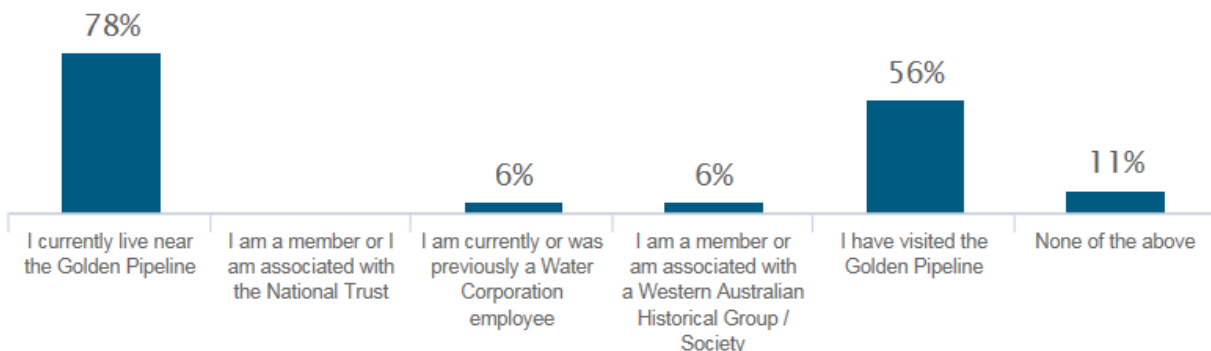


The graph above shows the percentages of respondents that disagree or strongly disagree with the statements on the left.

Question 12: “Which of these if any, apply to you?”

Figure 5 shows that people who lived near the pipeline and/or visited the pipeline made up the majority of respondents. Figure 5 also indicates 78% of respondents indicated that the pipeline held special memories for them. This indicates the targeted advertising of this survey was effective and has resulted in responses from a close reflection of the population that this project will impact.

Figure 5: Responses to Question 12





Qualitative response results (Open-text responses)

The below tables outline responses received in the text boxes provided in the survey to answer questions 4, 6 and 7.

Question 4: “Where would you like to see the pipeline retained?”

It was clear that many respondents to this question did not interpret “retained” to mean retaining the pipe in-situ however, many ideas for repurposing and showcasing in other locations came through. Respondents seem to want the pipe to be maintained in places highly visible and where the community can stop and inspect it more closely, as well as there being appropriate signage present also.

Table 1: Responses to Question 4 and Water Corporation responses

Community Comments	Water Corporation Response
I'd like to see pieces donated to primary schools in Northam to be used as a historical tool and playground equipment.	Noted. This would not be in-situ, however, there will be opportunities for community use of the retired pieces of pipe will be as the replacement gets underway.
Burracoppin free camper site, Entry stops into Merredin. At the pump station.	Noted. Locations in this area will be investigated for retention in-situ.
Placed in the new Yilgarn Shire park area opposite the Palace Hotel. This park is on the Great Eastern Hwy and has the new Elephant in the Wheatbelt mural.	Noted. This would not be in-situ, however, there will be opportunities for community use of the retired pieces of pipe will be as the replacement gets underway.
10km from Kalgoorlie, in town centre in Parks, anywhere really, Coolgardie, Kambalda, just as you enter town. But some parks would be nice to have them in	Noted. Some of these locations would not be in-situ, however, there will be opportunities for community use of the retired pieces of pipe will be as the replacement gets underway.
Sections close to the road along various parts of the drive from Perth and around the Goldfields	Noted. Placement alongside the road is subject to consultation with MRWA and consideration of road safety issues.
Kalgoorlie, Mundaring weir, Cunderdin	Noted. Locations in this area will be investigated for retention in-situ.
Mundaring shire	Noted. Locations in this area will be investigated for retention in-situ.
I believe as much of the pipeline as possible should be retained in a visible way in its original location.	To maintain a large amount of pipeline once it is no longer in operation would be very resource intensive. The purpose of the Water Corporation's referral is to enable the removal of the pipeline in a manner that balances the Corporation's fiscal and operational responsibilities with heritage values.
Kalgoorlie	Noted. Locations in this area will be investigated for retention in-situ.
Chidlow	Noted. Locations in this area will be investigated for retention in-situ.
I love the idea of a piece with a plaque in each town/locality along the entire pipeline.	Water Corporation is open to maintaining a section of the pipe in each locality if suitable locations can be identified.



Entry to Kalgoorlie Hannans North Tourist Mine Mt Charlotte lookout Kalgoorlie	Noted. Locations in this area will be investigated for retention in-situ.
--	---

Question 6: “And why do you say that?” (in relation to the respondents answer to Question 5: “How do you feel about this idea of repurposing and showcasing sections of the pipeline in the community?”)

Community responses indicate some clear themes around demonstrating historical significance and recycling to prevent wasted resources.

Table 2: Responses to Questions 5 & 6 and Water Corporation responses.

Level of support (response to Question 5 - also captured in figure 4)	Community Comment	Water Corporation Response
Neither support nor oppose	Show casing sections is all well and good but visitors and overseas visitors would get no understanding of the amazing feat that this pipeline was by looking at one section in a park or museum.	Water Corporation is investigating options that will leave parts of the pipe in-situ to indicate the length. There are also plans to video the length of the pipe for archives.
Strongly support	Nil	NA
Strongly support	Important part of WA history.	Water Corporation agrees the history of the pipeline is important to WA and the nation, especially the communities which it services.
Neither support nor oppose	Nil	NA
Strongly support	We find the old steam pump station sites very interpretative, having more sites with information for local area would be educational.	Noted. Ways to educate the community and visitors on the history of the pipe will be considered.
Strongly support	Preserving history	Water Corporation agrees the history of the pipeline is important to WA, especially to the communities which it services.
Strongly support	Because I believe in recycling and I think it's great for towns to show case history	Water Corporation also sees value in recycling the pipe into items useful to the community and agrees the history of the pipeline is important to WA, especially to the communities which it services.
Support	Nil	NA



Strongly support	Better than throwing it away but is more impressive when left as it is above ground. If it was to be repurposed, use in playgrounds and as part of art installations in different communities would be a good idea. Could have a community event day where sections are painted (can be vertical or horizontal). Make more things like the world's tallest bin, get artists in to paint them	Noted. Water Corporation also sees value in recycling the pipe into items useful to the community. Further engagement on how to use the retired pieces of pipe will be undertaken in each town as the replacement gets underway.
Support	It would be awesome to make them art installations or tourist attractions something that encourages tourists to stop at smaller towns	Noted. Water Corporation also sees value in recycling the pipe into items useful to the community.
Support	It Gives back to the community.	Water Corporation also sees value in recycling the pipe into items useful to the community.
Neither support nor oppose	Nil	NA
Strongly support	As principal of O'Connor PS, named after CY O'Connor, we would love to get more sections to represent the pipeline and its importance for Kalgoorlie Boulder. They can be incorporated into entry statements or playgrounds.	Noted. O'Connor PS will be a key stakeholder in the engagement carried out for replacement programs in Kalgoorlie Boulder and Water Corporation will donate sections of the pipe to be used by the community in locations where it is replaced.
Strongly support	Respect	Noted.
Strongly support	To retain awareness of this critical resource and its history.	Noted.
Strongly support	It's a good idea	Noted.
Strongly support	Nil	NA

Question 7: “How and where do you think sections of the pipe could be repurposed?”

Responses to this question were varied and many were original ideas. It demonstrates a desire to see the pipe used in ways that benefit the relevant communities through which it travels and the many opportunities available to showcase it.

Table 3: Responses to Question 7 and Water Corporation responses.

Community Comment	Water Corporation Response
Give them to primary schools to use in playgrounds.	Water Corporation will donate sections of the pipe to be used by the community in locations where it is replaced.
Merredin Peak RV camp site, Burracoppin RV camp site. Merredin old pump station.	Noted. These ideas will be taken into consideration when plans for replacement are underway.
Entrance statements in country towns along the Gt Eastern Hwy.	Noted. Placement alongside the road is subject to consultation with MRWA and consideration of road safety issues.



Kalgoorlie Speedway, Parking Bay, information bay, Parks, I would really like something put in boulder Park as its pretty boring there and visitors to our town constantly go there it would be good	Noted. These ideas will be taken into consideration when plans for replacement are underway. Placement alongside the road is subject to consultation with MRWA and consideration of road safety issues.
Along the highway, in the centre of the small towns that local artist or sculptors to turn them into installations, or have an activity to do at each section of pipeline akin to the Nullarbor links	Noted. These ideas will be taken into consideration when plans for replacement are underway. Placement alongside the road is subject to consultation with MRWA and consideration of road safety issues.
Parks and tourist destinations	Noted. These ideas will be taken into consideration when plans for replacement are underway.
Entry ways and focal community places.	Noted. These ideas will be taken into consideration when plans for replacement are underway. Placement alongside the road is subject to consultation with MRWA and consideration of road safety issues.
Leave as many as possible in position, even if they are not in use anymore. Each town that has the pipeline through it now should have a section on display in local park or other prominent location.	To maintain a large amount of pipeline once it is no longer in operation would be very resource intensive. The purpose of the Water Corporation's referral is to enable the removal of the pipeline in a manner that balances the Corporation's fiscal and operational responsibilities with heritage values.
Already described. Also any relevant museum locations. Showcase it wherever relevant! Water supply, water conservation. DEFINITELY at its source and end!	Noted. These ideas will be taken into consideration when plans for replacement are underway.
Signs town bins floor like you are now walking on section of pipeline.	Noted. Signage indicating the location of the new pipe will be taken into consideration when installation is underway.

Other written submissions

Table 4: Submissions received by letter or email and Water Corporation's response.

Author	Summary of submission	Water Corporation response
Mervyn Thompson	Mr Thompson made us aware of his 2007 proposal to have a piece of pipe sent to Cunderdin to be displayed outside the Cunderdin Museum. He also recommended at the time, that the pipe be painted with murals and notes he did not intend for Water Corporation to paint these.	A length of pipe was supplied for outside the Cunderdin museum and displayed, but never painted. Painting the pipe is something the Shire and other stakeholders of the museum would need to consider.
Public Transport Authority	Redundant aboveground pipeline situated within the rail corridor must be removed. The Water Corporation should obtain the necessary approvals from PTA and Arc Infrastructure before doing so.	PTAs request to remove pipeline from its corridor once decommissioned is noted. However, Water Corporation is currently restricted under the EPBC Act to meet this request.



		Water Corporation fully intends to obtain all approvals necessary to carry out this work.
Main Roads WA	<p>Main Roads agree in principle to the use of rest areas along Great Eastern Highway to display decommissioned sections of the pipe.</p> <p>Where possible to move the pipeline outside the road reserve, or at least 10m off the seal of the road.</p> <ul style="list-style-type: none"> • Main Roads has no issue with the upgraded pipeline being sunk underground. • Where the water pipeline crosses our Roads, a 90 degree angle is preferred. 	Noted.
National Trust Western Australia	<p>The National Trust is keen to work with Water Corporation to ensure the heritage values of the GWSS are conserved and made accessible to the public. The National Trust believes the review should not be restricted to only locking bar pipe. The National Trust suggests the following criteria is used to identify significant sections of the pipe:</p> <p>Long views of the pipeline snaking across the landscape, running alongside the road (as seen in the goldfields / around Borrabbin and west of Southern Cross), running along the Kep Track, the first visible section along Great Eastern Hwy after leaving Mundaring, sections of the pipe coming into Cunderdin which were painted gold in 2003, sections of the pipeline associated with infrastructure (pump stations, valves, cradles, welding signatures and examples of different kinds of pipe (ie locking bar, hume, etc), across the salt lakes, various examples of ways to mitigate against corrosion. They also recommend we identify a key location where a key event relevant to the pipe took place and create a "pipe story park" where there can be interpretation, public art, picnic facilities, etc and suggest public art opportunities should be pursued and slices could also be used for potential souvenirs.</p>	Noted. The Water Corporations referral relates to the entirety of the main conduit and is not restricted to locking bar pipe. Conversation with the National Trust is ongoing and the Water Corporation will endeavour to adopt the suggestions of the NT where practicable.
Peter Harrison	<p>Peter offered the following suggestions for repurposing:</p> <ul style="list-style-type: none"> • Sell for scrap metal recycling • Use by shires and farmers and irrigators as culverts, water transfer pipes, creek road-crossing ducts, bridges across creeks Wind turbine columns Underground shelter for chooks on hot days • Camping site fire rings, with welded swivel-arm BBQ plate Ventilation shafts for mushroom cultivation or thermal rock-banks Sleeping shelters for homeless people, stacked together. • Pipe artwork in public spaces, with welded attachments. • Playground equipment, climbing frames • Elevated building columns • UV-proof storage tubes for PVC and other pipes Incinerator, compost bins, storage for recycling materials Valve bodies as pot belly stoves, pizza ovens Tank stands 	<p>Water Corporation also sees value in recycling the pipe into items useful to the community. There will be opportunity for community use of the retired pipe as replacement gets underway.</p> <p>The current referral relates to the main conduit only. Decommissioned tank sites are not currently being considered on the basis they are not safe for public access.</p>



	<ul style="list-style-type: none"> • Radio transmission towers to 18 m height Weather station poles Street light poles with solar panel on top and battery backup inside Solar panel columns Fence strainer posts Loading ramp ends Water slide Ducting for materials or air or water transfer. • Crush pipes to revive concrete liner and stir until the price of scrap metal makes its recycle sale profitable. • Display pieces as history artefacts <p>Have a think tank to plan the use of decommissioned tanks as interpretive centres.</p>	
Shire of Merredin	<p>As the pipeline is of a significant part of the township of Merredin, the Council and some local heritage groups would like to acquire some of the pipeline as the local Railway Museum holds two original pipeline pieces that are made from wood and metal. As CY O'Connor was significant in our region and was a main point from Perth to Kalgoorlie, pipe would be used in a way that honours him.</p> <p>Some ideas have been to use this for tourism aspects and heritage within the Shire and the entrances into Merredin. The Council and community are looking at ways to enhance a significant piece of history that has helped shaped Merredin.</p>	<p>Noted. The Shire of Merredin will be a key stakeholder in the engagement carried out for replacement programs in areas under their jurisdiction and Water Corporation agrees in principle to donate sections of the pipe to be used by the Shire.</p>
Shire of Mundaring	<p>The Shire of Mundaring is supportive of the proposed works and requests that the following be taken into account:</p> <ul style="list-style-type: none"> • There will need to be a flexible approach to the retention and adaptation of section of the pipeline for heritage interpretation and visual connection in different areas; • The volume of material sent to landfill should be minimised by reusing some sections of pipe within reserves and using rubble recycling; • Sections of the pipeline track on public land already provide some walking and cycling recreational opportunities and this should be maintained; • Design and construction practices should minimise clearing of native vegetation where possible and incorporate dieback hygiene requirements; • Appropriate safety precautions, including signage and temporary fencing where appropriate, should be undertaken; • Where any section of the pipeline traverses land that is under the care and control of the Shire, due notice of intention should be provided to the shire prior to works occurring. <p>The Shire has not yet given any consideration as to whether it could utilise retired sections of pipe, however, it is hoped the Shire can obtain redundant pipe as the need arises.</p>	<p>Noted. Water Corporation also sees value in recycling the pipe into items useful to the community. There will be opportunity for Shire / community use of the retired pipe as replacement gets underway.</p> <p>Impacts to native vegetation, die back hygiene requirements and safety issues with be addressed on a project-by-project basis in accordance with relevant Legislation</p> <p>The Shire of Mundaring will be notified with respect to works on land under its care and control on a project-by-project basis in accordance with the requirements of the <i>Water Services Act 2012</i></p>



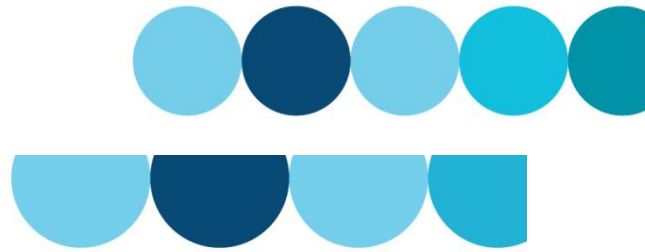
Shire of Northam*	The Shire of Northam has provided in-principal support for the use of Lions Park in Clackline to host a section of retired pipeline subject to further information and additional community consultation.	Noted.
-------------------	---	--------

**Shire of Northam did not respond directly to the letter issued (See Attachment 5) but replied in writing following a meeting with Water Corporation's project team.*



Attachment 1: Survey

Golden Pipeline Survey



How to write your answers

 Use black or blue pen

Tick the box like this

Completion of this survey should take 10 – 15 minutes

The Goldfields Pipeline is over 115 years old. Completed in 1903, it spans over 560 kilometres between Mundaring and Kalgoorlie. As you can imagine with infrastructure this age, some sections require upgrades to ensure water supply integrity.

The pipeline is included on the National Heritage List, which means once sections have been upgraded, the removal of older sections requires referral to the Federal Department of Environment and Energy (DEE) for potential assessment under the Environment Protection and Biodiversity Conservation Act 1999 (EPBC Act Cth).

What are we seeking?

We are seeking the ability under the EPBC Act to remove and recycle the above ground pipe as it is progressively replaced over the next 50 years.

We are seeking community input to prioritise areas of significance along the pipeline for possible preservation in-situ and how to use old pieces that are removed for the enjoyment of future generations.

Our aim is to demonstrate a practical strategy that recognises the operational nature of the pipeline and ensures the protection of its heritage value.

Please fill out this survey and send back to Water Corporation in the reply paid envelope provided by 30 November 2018.



Please read this information from Water Corporation about the Golden Pipeline.

About the Golden Pipeline

'The Golden Pipeline' is 560 km long and over 115 years old and has been included on the National Heritage List since 2011. The Water Corporation values the pipeline's rich heritage and acknowledges the important role it has played in the development of Western Australia. The Golden Pipeline continues to operate today and supplies water to around 100,000 people between Mundaring and Kalgoorlie.

How upgrades to the Pipeline are managed today

Like any water asset, upgrades to the pipeline are necessary so the supply of water can continue. These upgrades occur in sections and are typically undertaken in three stages;

Stage 1. Identification of a section of pipe that is no longer suitable for use.

Stage 2. Installation of a new section of belowground pipe to meet today's performance, safety, security, and cost requirements. The new section is installed whilst the aboveground pipe is still in service to ensure water supplies to our customers are not interrupted.

Stage 3. Removal and recycling of the non-operational aboveground pipe.

Commonwealth Department of Environment and Energy (DEE)

Due to the Golden Pipeline being included on the National Heritage List, the removal of the pipeline once it is non-operational requires referral to the Commonwealth Department of Environment and Energy (DEE) for assessment under the Environment Protection and Biodiversity Conservation 1999 (EPBCA) Act which can add significant costs and delays to the delivery of projects.

There is a significant cost associated with maintaining a non-operational aboveground pipeline and prior to the inclusion of the pipeline on the National Heritage List, non-operational sections of pipe would typically be removed and recycled such as in Meckering.

Water Corporation's Proposal

Water Corporation is seeking approval under the EPBC Act that will allow the removal and recycling of aboveground pipe as it is progressively decommissioned over the next 50 year period.

As part of its proposal, Water Corporation would like community input to prioritise areas of significance along the pipeline to be preserved in its original state, and potential ideas for other uses once the original pipeline is no longer in use.



Areas of significance - Water Corporation would consider retaining sections of the pipeline in certain geographical areas. For example, on main entry ways to towns, on stops along the highway in between towns, on public/crown land where locals and tourists can discover and see the pipeline away from the main road.

Repurposing the pipeline - In addition to pipeline retention, high quality sections of the pipeline could be repurposed and showcased in the community. For example, a section of the pipeline was reused as a bar at the Perth International Arts Festival and a section of C.Y O'Connor's original Goldfields Pipeline is now on display in Bernard Park in Northam.



Perth International Arts Festival



Bernard Park, Northam



Water Corporation would like to retain representative sections of the aboveground pipeline in certain geographical areas to showcase for future generations and retain heritage values; For example, on main entry ways to towns, on public / Crown land where locals and tourists can discover and see the pipeline away from the main road.

Q1. How do you feel about this idea of retaining sections of the aboveground pipeline in selected geographic areas?

₁ Strongly support

₂ Support

₃ Neither support nor oppose

₄ Oppose

₅ Strongly oppose

Q2. And why do you say this?

Please write in your answer



Q3. Which parts of the pipeline would you like to see retained?

Please tick all options that are applicable to you

- ₁ On main entry ways to towns
- ₂ On stops along the highway such as public/Crown land where locals and tourists can discover and see the pipeline
- ₃ None – I don't believe it is necessary to retain a pipeline once it's no longer in use

Q4. Where would you like to see the pipeline retained?

Name the nearest town; the location of the nearest crossroads; the kilometre marker of the geographic coordinates for the location

Please write in your answer



High quality sections of the pipeline can be repurposed and showcased in the community, allowing it to live on. For example, a section of the pipeline was reused for a billboard sign in Canning Vale (see below) and a section of C.Y. O'Connor's original Goldfields Pipeline is now on display in Bernard Park in Northam.

Water Corporation is also considering archival recording in accordance with the standards of the State Heritage Office for each section of pipeline that is removed, and making decommissioned segments of pipe available to the National Trust and community groups for interpretation purposes.



Bernard Park, Northam



Billboard, Canning Vale



Q5. How do you feel about this idea of repurposing and showcasing sections of the pipeline in the community?

₁ Strongly support

₂ Support

₃ Neither support nor oppose

₄ Oppose

₅ Strongly oppose

Q6. And why do you say that?

Please write in your answer

Q7. How and where do you think sections of the pipeline could be repurposed and showcased in the community? We'd love to hear your ideas.

Please write in your answer



Q8. How do you feel about each of these statements?

Please tick one box per line

	Disagree strongly	Disagree	Neither agree nor disagree	Agree	Agree strongly
a. I believe a belowground pipeline is safer than the existing aboveground pipeline	<input type="checkbox"/> 1	<input type="checkbox"/> 2	<input type="checkbox"/> 3	<input type="checkbox"/> 4	<input type="checkbox"/> 5
b. Replacing the pipeline will improve security and quality of water supply	<input type="checkbox"/> 1	<input type="checkbox"/> 2	<input type="checkbox"/> 3	<input type="checkbox"/> 4	<input type="checkbox"/> 5
c. Progressively replacing the aboveground pipeline with a belowground pipeline will save money (compared to maintaining the aboveground pipeline)	<input type="checkbox"/> 1	<input type="checkbox"/> 2	<input type="checkbox"/> 3	<input type="checkbox"/> 4	<input type="checkbox"/> 5
d. I would like to see some parts of the pipeline preserved in its original state	<input type="checkbox"/> 1	<input type="checkbox"/> 2	<input type="checkbox"/> 3	<input type="checkbox"/> 4	<input type="checkbox"/> 5
e. I would like to see some parts of the pipeline repurposed and showcased in the community	<input type="checkbox"/> 1	<input type="checkbox"/> 2	<input type="checkbox"/> 3	<input type="checkbox"/> 4	<input type="checkbox"/> 5
f. The pipeline is something that all Western Australians should be proud of	<input type="checkbox"/> 1	<input type="checkbox"/> 2	<input type="checkbox"/> 3	<input type="checkbox"/> 4	<input type="checkbox"/> 5
g. The pipeline has personal meaning / memories for me	<input type="checkbox"/> 1	<input type="checkbox"/> 2	<input type="checkbox"/> 3	<input type="checkbox"/> 4	<input type="checkbox"/> 5



These questions are to help classify your answers and ensure we are collecting the views from a range of people.

Q9. Are you male or female?

₁ Male

₂ Female

₃ Prefer not to say

Q10. How old are you?

₁ Under 18

₂ 18 to 34

₃ 35 to 44

₄ 45 to 54

₅ 55 to 64

₆ 65 to 74

₇ 75 to 84

₈ 85+

₉ Prefer not to say

Q11. Where do you live? What is your postcode?



Q12. Which of these, if any, apply to you? Please tick all that apply.

- ₁ I currently live near the Golden Pipeline
- ₂ I am a member or I am associated with the National Trust
- ₃ I am currently or was previously a Water Corporation employee
- ₄ I am a member or am associated with a Western Australian Historical Group/Society
- ₅ I have visited the Golden Pipeline
- ₆ None of the above

Q13. Before today, had you heard of the Golden Pipeline?

- ₁ Yes, I know a lot about the Golden Pipeline
- ₂ Yes, I know a fair amount about the Golden Pipeline
- ₃ Yes, but I know little or nothing about the Golden Pipeline
- ₄ No, I had not heard of the Golden Pipeline before today

Q14. Do you have any other feedback about the Golden Pipeline or Water Corporation's proposal that you would like to provide?

Please write in your answer

Thank you for your time. If you would like to receive updates, please register your interest at <https://yoursay.watercorporation.com.au/goldenpipeline>



Attachment 2: Public Notice in local papers

Public Notice

Tell us your thoughts

Water Corporation wants your feedback on how we can use retired sections of the Mundaring to Kalgoorlie Pipeline.

The nationally heritage-listed Goldfields Water Supply Scheme has been continuously upgraded over the years to ensure a safe and reliable water supply. It is estimated that around eight to 10 kilometres of the 566 kilometre pipe will need replacing each year over the next 50 years.

Water Corporation would like community views on areas of significance along the pipeline for possible preservation in its original state, and ideas for other uses when sections of pipe can be recycled and used to maintain and express its historical significance.

Submissions received will assist in the preparation of a referral under the *Environment Protection and Biodiversity Conservation Act 1999 (Cth)*.

To read more and complete the survey visit
yoursay.watercorporation.com.au/goldenpipeline

Copies of the survey will also be available at Local Government offices along the pipeline route.

Written submissions can be sent to:

Community Engagement
Water Corporation
PO Box 100
Leederville WA 6902
or community.engagement@watercorporation.com.au

Comment period closes 30 November 2018.

.....

watercorporation.com.au





Attachment 3: Public Notice in community newsletter/ Posters sent to local governments for placement on community notice boards

Tell us your thoughts



Water Corporation wants your feedback on how we can use retired sections of the Mundaring to Kalgoorlie pipeline.

The nationally heritage-listed Goldfields Water Supply Scheme has been continuously upgraded over the years to ensure a safe and reliable water supply. It is estimated that around 8 to 10 kilometres of the 566 kilometre pipe will need replacing each year for the next 50 years.

Water Corporation would like community views on areas of significance along the pipeline for possible preservation in its original state and ideas for other uses when sections of pipe can be recycled and used to maintain and express its historical significance.

Submissions received will assist in the preparation of a referral under the *Environment Protection and Biodiversity Conservation Act 1999 (Cth)*.



To read more and complete the survey visit:

yoursay.watercorporation.com.au/goldenpipeline

Copies of the survey will also be available at Local Government offices along the pipeline route.

Written submissions can be sent to:

Community Engagement
Water Corporation
PO Box 100
LEEDERVILLE WA 6902

**Comment period closes
30 November 2018**

Or community.engagement@watercorporation.com.au

watercorporation.com.au

Fresh Water Thinking





Attachment 4: Article in Kalgoorlie Miner

Date: 17 November 2018
Source: Kalgoorlie Miner
Page Number: 6
Author: Emilee Neeson
Circulation: 3,018



This article is licenced by Copyright Agency. You must not copy this work without permission.

Ideas wanted for O'Connor's pipes

■ **Emilee Neeson**

The Water Corporation is seeking community feedback on the upgrading of the Goldfields Pipeline to determine what to do with decommissioned pieces of the scheme CY O'Connor masterminded at the turn of the 20th century.

About 8km-10km of the 566km pipeline needs to be replaced each year across the next 50 years to maintain a safe and reliable drinking water supply to the Goldfields, with the Water Corporation seeking approval for the upgrade from the Federal Department of Environment and Technology.

Water Corporation Goldfields and Agricultural Region acting regional manager Evan McCartin said the corporation wanted residents' opinions on what should be done with the historic pieces of the pipeline removed.

Mr McCartin said decommissioned pieces in the past had been showcased at the Perth International Arts Festival and displayed in various locations across the State.

"Certain sections of the pipeline that may have significance to the community could be retained onsite, for example on main entryways into towns, or on stops along the highway or walking trails where locals and tourists can see the pipe in a safe environment," he said.

"There is also the possibility to recycle sections into seats, planter boxes or other items that can be used by the community.

"Given the historical importance of the pipeline to the community and its story as a pioneering engineering achievement, we are encouraging the community's feedback on how these pieces of old pipeline could be re-purposed for the enjoyment of future generations."

Submissions will be included in the application to the Federal Government.

Residents are encouraged to provide feedback before November 30 at yoursay.watercorporation.com.au/goldenpipeline or contact community.engagement@watercorporation.com.au.



Attachment 5: Letter to local governments

25 October 2018

<Name>

<Chief Executive Officer>

<Local Government>

<Address line 1>

<Address line 2>

Dear <Title> <Surname>,

PROPOSED WORKS TO THE GOLDEN PIPELINE – MUNDARING TO KALGOORLIE

Water Corporation is currently seeking community feedback on proposed works to the Goldfields Water Supply Scheme, also known as the Golden Pipeline.

The Scheme, which is over 115 years old, has been included on the National Heritage List since 2011. This means it is protected under the Commonwealth Government *Environment Protection and Biodiversity Conservation Act 1999 (EPBC Act)*. Parts of the scheme are also included on the State Register of Heritage Places and various local government heritage lists and inventories.

To ensure security and reliability of the water supply, sections of the pipe have been upgraded and replaced over the years. Once a section of new underground pipe has been installed, the redundant aboveground pipeline has historically been repurposed or recycled. Community feedback is sought in relation to sections of aboveground pipeline that are no longer required. We are particularly interested in identifying areas of the pipeline that may be of significance to the community that could be potentially retained in-situ or utilised in other ways that respect the pipeline's historic significance.

Please note, the work planned is to the main pipeline only and not to the other elements of the Nationally Listed scheme, such as the historic steam pumping stations or Mundaring Weir. Despite its age, much of the pipeline remains in good condition and therefore works will occur incrementally over the next 50 plus year period.

Community responses will inform referrals to the Department of Environment and Energy (DEE) and Department of Planning, Lands and Heritage (DPLH) pursuant to the requirements of the *EPBC Act* and *Heritage of Western Australia Act 1990*. These referrals will also be developed in consultation with the National Trust and all local government authorities along the pipeline.



Thank you for offering to help us by making hard copies of the surveys available at your premises'. Copies of the survey are enclosed with reply paid envelopes for the convenience of your community members. Public notices will be placed in local publications advising the surveys can be found at your offices and we encourage you to promote the opportunity through your regular channels also.

As a Local Government organisation that has a connection to the Golden Pipeline, we would be very interested in your insights and invite you to make submissions. You can visit yoursay.watercorporation.com.au/goldenpipeline to answer our survey or respond in writing to:

Community Engagement
Water Corporation
PO Box 100
Leederville WA 6902

All submissions must be received by no later than close of business **30 November 2018**.

We thank you for your interest and look forward to hearing your ideas.

Yours faithfully,

A handwritten signature in black ink, appearing to read "Sharon Broad".

Sharon Broad
Regional Manager
Goldfields & Agricultural Region



Attachment 7: Letter to other external stakeholders



25 October 2018

<Organisation>

<Address line 1>

<Address line2>

To Whom It May Concern,

PROPOSED WORKS TO THE GOLDEN PIPELINE – MUNDARING TO KALGOORLIE

Water Corporation is currently seeking community feedback on proposed works to the Goldfields Water Supply Scheme, also known as the Golden Pipeline.

The Scheme, which is over 115 years old, has been included on the National Heritage List since 2011. This means it is protected under the Commonwealth Government *Environment Protection and Biodiversity Conservation Act 1999 (EPBC Act)*. Parts of the scheme are also included on the State Register of Heritage Places and various local government heritage lists and inventories.

To ensure security and reliability of the water supply, sections of the pipe have been upgraded and replaced over the years. Once a section of new underground pipe has been installed, the redundant aboveground pipeline has historically been repurposed or recycled. Community feedback is sought in relation to sections of aboveground pipeline that are no longer required. We are particularly interested in identifying areas of the pipeline that may be of significance to the community that could be potentially retained in-situ or utilised in other ways that respect the pipeline's historic significance.

Please note, the work planned is to the main pipeline only and not to the other elements of the Nationally Listed scheme, such as the historic steam pumping stations or Mundaring Weir. Despite its age, much of the pipeline remains in good condition and therefore works will occur incrementally over the next 50 plus year period.

Community responses will inform referrals to the Department of Environment and Energy (DEE) and Department of Planning, Lands and Heritage (DPLH) pursuant to the requirements of the *EPBC Act* and *Heritage of Western Australia Act 1990*. These referrals will also be developed in consultation with the National Trust and all local government authorities along the pipeline.

As an organisation that has a connection to the Golden Pipeline, we would be very interested in your insights and would like to invite you to make a submission. You can visit yoursay.watercorporation.com.au/goldenpipeline to answer our survey or respond in writing to:

629 Newcastle Street
Leederville WA 6007

PO Box 100
Leederville 6902

T (08) 9420 2420



Community Engagement
Water Corporation
PO Box 100
Leederville WA 6902

All submissions must be received by no later than close of business **30 November 2018**.

We thank you for your interest and look forward to hearing your ideas.

Yours faithfully,

A handwritten signature in grey ink that reads "Sharon Broad".

Sharon Broad
Regional Manager
Goldfields & Agricultural Region



Attachment 8: Posts by Local Government Facebook pages

 **Shire of Merredin** 12 November · 🌐 Like Page ⋮

'SHARE IT - BLARE IT' - YOUR SAY - GOLDEN PIPELINE UPGRADE

#ShareItBlareIt

"The Goldfields Pipeline is over 115 years old. Completed in 1903, it spans over 560 kilometres between Mundaring and Kalgoorlie. As you can imagine with infrastructure this age, some sections require upgrades to ensure water supply integrity.... See more



YOURSAY.WATERCORPORATION.COM.AU

Goldfields Pipeline upgrade | Your Say Water Corporation

The Goldfields Pipeline is over 115 years old. Completed in 1903, it spans...

 **Shire of Mundaring** 7 November · 🌐 ⋮

Water Corporation wants to hear from you about the Goldfield Pipeline Upgrade. Closing date for submissions is Friday, 30 November 2018.



YOURSAY.WATERCORPORATION.COM.AU

Goldfields Pipeline upgrade | Your Say Water Corporation

The Goldfields Pipeline is over 115 years old. Completed in 1903, it spans...



Attachment 9: Summary of stakeholders contacted by letter

Stakeholder	Contact
National Trust (WA)	Mr Julian Donaldson
Youth Futures - Pipeline challenge	
Goldfields pipeline marathon association	
Central Wheatbelt Visitor Centre	
Engineers Australia WA	
Cunderdin Historical Society	Mr Tony Smith
Hannans North Tourist Mine	Ms Melissa Chapman
Public Transport Authority	Ms Shelley Brindal
Main Roads WA	Ms Martine Scheltema
Department of Biodiversity, Conservation, and Attractions	Mr Bok Ho
Shire of Mundaring	Mr Jonathan Throssell
Shire of Northam	Mr Jason Whiteaker
Shire of Cunderdin	Mr Garry Martin
Shire of Tammin	Mr Garry Martin
Shire of Kellerberrin	Mr Raymond Griffiths
Shire of Merredin	Mr Greg Powell
Shire of Kalgoorlie	Mr John Walker
Shire of Coolgardie	Mr Paul Webb
Shire of Southern Cross	Mr Pascoe Durtanovich
Shire of Westonia	Mr James Criddle