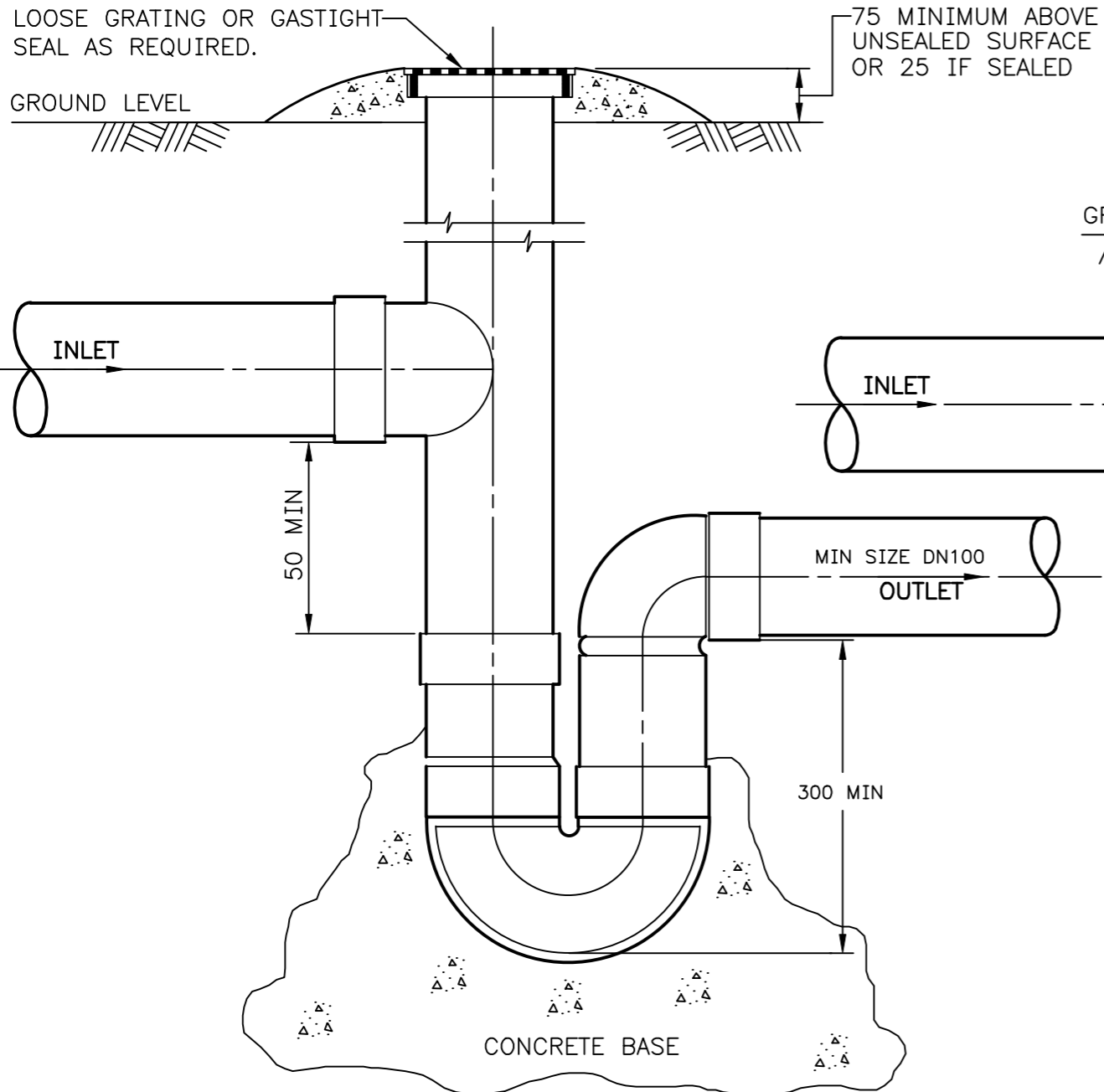


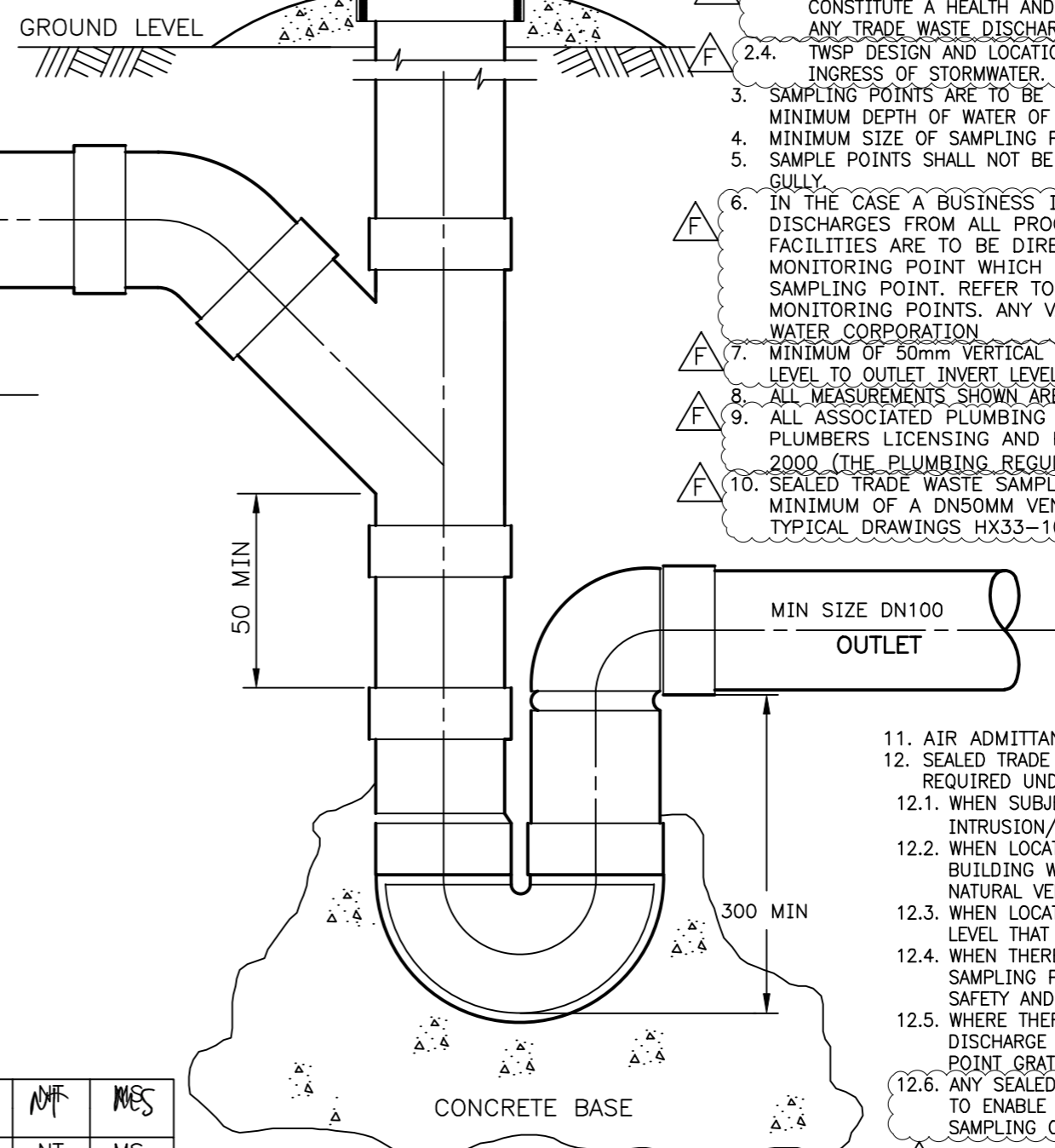
FOR MORE INFORMATION REFER TO OUR WEBSITE
watercorporation.com.au/tradewaste

GUIDELINES

1. LOCATED IMMEDIATELY DOWNSTREAM OF ANY PRE-TREATMENT FIXTURE.
2. LOCATION OF THE TRADE WASTE SAMPLING POINT (TWSP):
 - 2.1. TWSP SHALL BE LOCATED IN AN APPROPRIATE LOCATION WITH ADEQUATE SPACE FOR SAMPLING EQUIPMENT.
 - 2.2. TWSP MUST NOT BE LOCATED IN A TRAFFICABLE (PEDESTRIAN OR VEHICLE) AREA OR MUST BE POSITIONED AS DIRECTED BY WATER CORPORATION.
 - 2.3. TWSP DESIGN, LOCATION AND ACCESSIBILITY MUST NOT CONSTITUTE A HEALTH AND SAFETY RISK IN THE MONITORING OF ANY TRADE WASTE DISCHARGE.
 - 2.4. TWSP DESIGN AND LOCATION MUST PREVENT THE INTRUSION/INGRESS OF STORMWATER. REFER POINT 12
3. SAMPLING POINTS ARE TO BE PURPOSE MADE TO PROVIDE A MINIMUM DEPTH OF WATER OF 300mm.
4. MINIMUM SIZE OF SAMPLING POINT SHALL BE DN100
5. SAMPLE POINTS SHALL NOT BE USED AS A RELIEF DISCONNECTOR GULLY.
6. IN THE CASE A BUSINESS IS REQUIRED TO BE MONITORED, DISCHARGES FROM ALL PROCESS AREAS OR TREATMENT FACILITIES ARE TO BE DIRECTED THROUGH A SINGLE MONITORING POINT WHICH INCLUDES A TRADE WASTE SAMPLING POINT. REFER TO PUB 11 – TRADE WASTE MONITORING POINTS. ANY VARIATIONS TO BE APPROVED BY WATER CORPORATION.
7. MINIMUM OF 50mm VERTICAL DIFFERENCE BETWEEN INLET INVERT LEVEL TO OUTLET INVERT LEVEL
8. ALL MEASUREMENTS SHOWN ARE IN MILLIMETRES.
9. ALL ASSOCIATED PLUMBING WORK IS TO COMPLY WITH THE PLUMBERS LICENSING AND PLUMBING STANDARDS REGULATIONS 2000 (THE PLUMBING REGULATIONS) (AS AMENDED)
10. SEALED TRADE WASTE SAMPLING POINTS MUST HAVE A MINIMUM OF A DN50MM VENT TO ATMOSPHERE REFER TO TYPICAL DRAWINGS HX33-10-10



SECTION GRAVITY DISCHARGE



SECTION PUMPED DISCHARGE

11. AIR ADMITTANCE VALVES ARE NOT TO BE USED
12. SEALED TRADE WASTE SAMPLING POINTS ARE REQUIRED UNDER THE FOLLOWING CIRCUMSTANCES:
 - 12.1. WHEN SUBJECT TO STORM WATER INTRUSION/INGRESS.
 - 12.2. WHEN LOCATED UNDER FOOTPRINT OF A BUILDING WHERE THERE IS NO SIGNIFICANT NATURAL VENTILATION.
 - 12.3. WHEN LOCATED IN A BASEMENT BELOW GROUND LEVEL THAT HAS MECHANICAL VENTILATION.
 - 12.4. WHEN THERE IS A POSSIBILITY THAT THE SAMPLING POINT GRATE WOULD CONSTITUTE A SAFETY AND HEALTH HAZARD.
 - 12.5. WHERE THERE IS A POSSIBILITY A PUMPED DISCHARGE COULD ESCAPE VIA THE SAMPLING POINT GRATE.
 - 12.6. ANY SEALED SAMPLE POINT MUST BE DESIGNED TO ENABLE THE APPROPRIATE AND SAFE SAMPLING OF TRADE WASTE DISCHARGES.

ISSUE	DATE	GRID	REVISION	DRN	REC	APPD
F	05/2024		NOTES 2,4 AND 12.6 ADDED, NOTES 2.3,6,7,9 AND 10 UPDATED	JD	MF	MES
E	03/2020		PLUMBING REGULATION TITLE AND DRAWING NAME UPDATED, NOTE 12 ADDED	JMS	NT	MS
D	10/2016		WEBSITE DETAILS ADDED, NOTES AMENDED	BJ	SJ	MS
C	01/2012		NOTE 6 MODIFIED, NOTES 10 & 11 ADDED	BJ	MS	AM
B	06/2009		NOTE 9 ADDED	RJ	GC	AM

SCALE: DIAGRAMMATIC

DES CALC	DES CHD	DRN A CLEAVER	Q.C. CHD G CLEAVER	RECOMMENDED 01/08/2005 A MANZINGER SENIOR ASSESSMENTS OFFICER	APPROVED 01/08/2005 J HEWITT MANAGER, INDUSTRIAL WASTES		WATER CORPORATION TYPICAL DRAWINGS FOR TRADE WASTE TRADE WASTE SAMPLING POINT (TWSP)	FILE 58583430 PROJECT	PLAN HX33-11-30	CAD ISSUE F MF	ORIGINAL SHEET SIZE A3
----------	---------	------------------	-----------------------	--	--	--	--	--------------------------	--------------------	-------------------	---------------------------