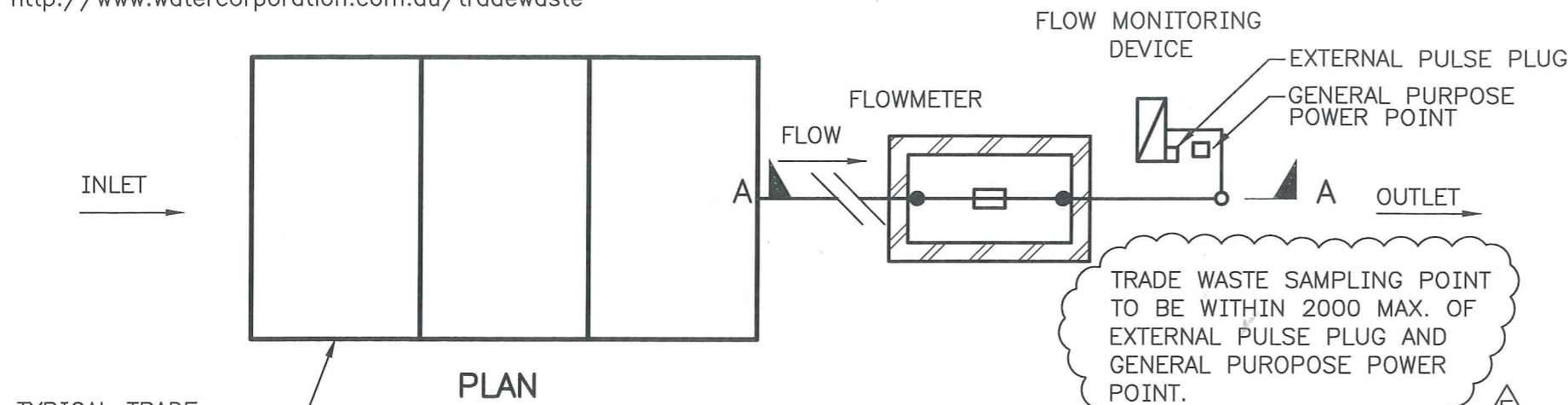
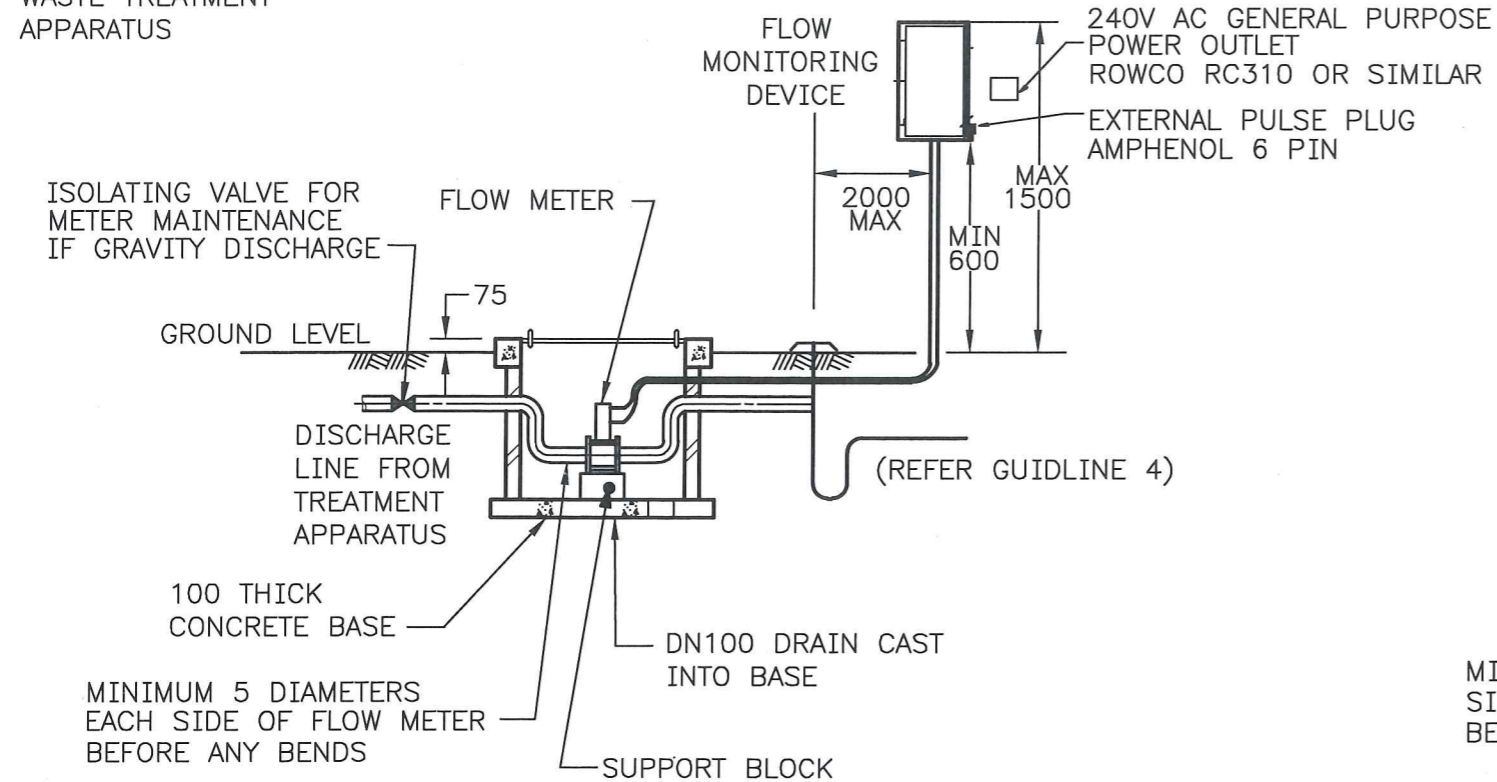


FOR MORE INFORMATION REFER TO OUR TRADE WASTE WEB PAGE
<http://www.watercorporation.com.au/tradewaste>



TYPICAL TRADE WASTE TREATMENT APPARATUS

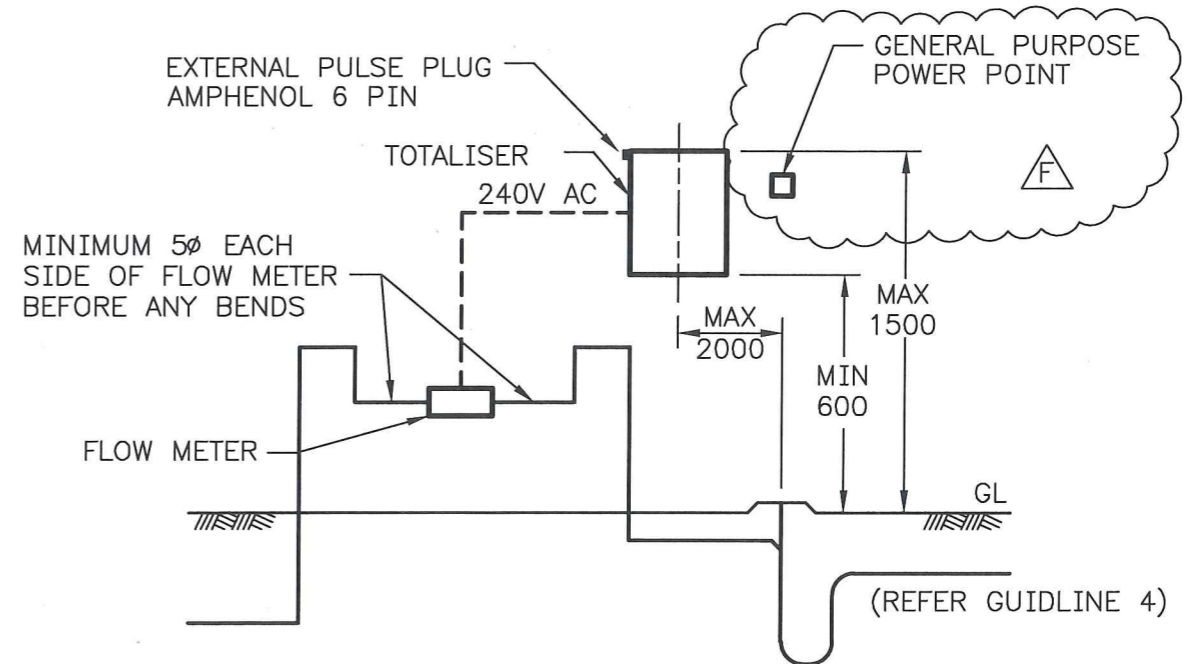
TRADE WASTE SAMPLING POINT TO BE WITHIN 2000 MAX. OF EXTERNAL PULSE PLUG AND GENERAL PURPOSE POWER POINT.



SECTION A
 BELOW GROUND INSTALLATION

GUIDELINES

1. PLEASE NOTE THIS DRAWING IS NOT A STAND ALONE DOCUMENT AND MUST BE READ IN CONJUNCTION WITH PUB 9, 11 & 16.
2. TRADE WASTE SAMPLING POINT TO BE WITHIN 2 METRES OF EXTERNAL PULSE PLUG AND GENERAL PURPOSE POWER POINT.
3. UNLESS OTHERWISE APPROVED, ONLY ONE TRADE WASTE SAMPLE POINT TO BE PROVIDED FOR EACH BUSINESS.
4. REFER TO TYPICAL DRAWING HX33-11-30 TRADE WASTE SAMPLE POINTS FOR FURTHER DETAILS.
5. ALL MEASUREMENTS SHOWN ARE IN MILLIMETRES.
6. ALL ASSOCIATED PLUMBING WORK IS TO COMPLY WITH THE PLUMBERS LICENSING AND PLUMBING STANDARDS REGULATIONS 2000 (THE PLUMBING REGULATIONS) AND LATEST VERSIONS OF AS/NZS 3500.1 AND AS/NZS 3500.2.
7. A TRADE WASTE COMMISSIONING REPORT IS REQUIRED TO BE SUBMITTED TO THE WATER CORPORATION UPON INSTALLING THE TRADE WASTE MONITORING POINT.
8. FLOW METER SHALL BE APPROPRIATELY SIZED FOR THE BUSINESS TRADE WASTE DISCHARGE FLOW RATE AND VOLUME.
9. LOCATION OF THE TRADE WASTE SAMPLING POINT (TWSP):
 - 9.1. TWSP SHALL BE LOCATED IN AN APPROPRIATE LOCATION WITH ADEQUATE SPACE FOR SAMPLING EQUIPMENT.
 - 9.2. TWSP MUST NOT BE LOCATED IN A TRAFFICABLE (PEDESTRIAN OR VEHICLE) AREA OR MUST BE POSITIONED AS DIRECTED BY THE WATER CORPORATION.
 - 9.3. TWSP MUST NOT CONSTITUTE A SAFETY AND HEALTH HAZARD



ABOVE GROUND INSTALLATION

SCALE: DIAGRAMMATIC

F	02/2020		GUIDELINES AMENDED, COMMENTS UPDATED.	JMS		
E	10/2016		SAMPLING POINT DETAIL REMOVED, NOTES AMENDED	BJ	SJ	MS
D	07/2016		WEBSITE DETAILS ADDED, GUIDELINES AMENDED	BJ	SJ	MS
C	01/2012		NOTE 2 MODIFIED	BJ	MS	AM
B	06/2009		NOTE 6 ADDED	RY	GC	AM
ISSUE	DATE	GRID	REVISION	DRN	REC	APPD

DES CALC	RECOMMENDED	01/08/2005
DES CHD	A MANZINGER	SENIOR ASSESSMENTS OFFICER
DRN	APPROVED	01/08/2005
A CLEAVER	J HEWITT	MANAGER, INDUSTRIAL WASTES
Q.C. CHD		
G CLEAVER		



WATER CORPORATION
 TYPICAL DRAWINGS FOR TRADE WASTE
 TRADE WASTE MONITORING POINT

ORIGINAL SHEET SIZE

A3

FILE 58536712

PLAN

CAD ISSUE

PROJECT

HX33-20-00

F

MF