

FOR MORE INFORMATION REFER TO OUR TRADE WASTE WEB PAGE
<http://www.watercorporation.com.au/tradewaste>

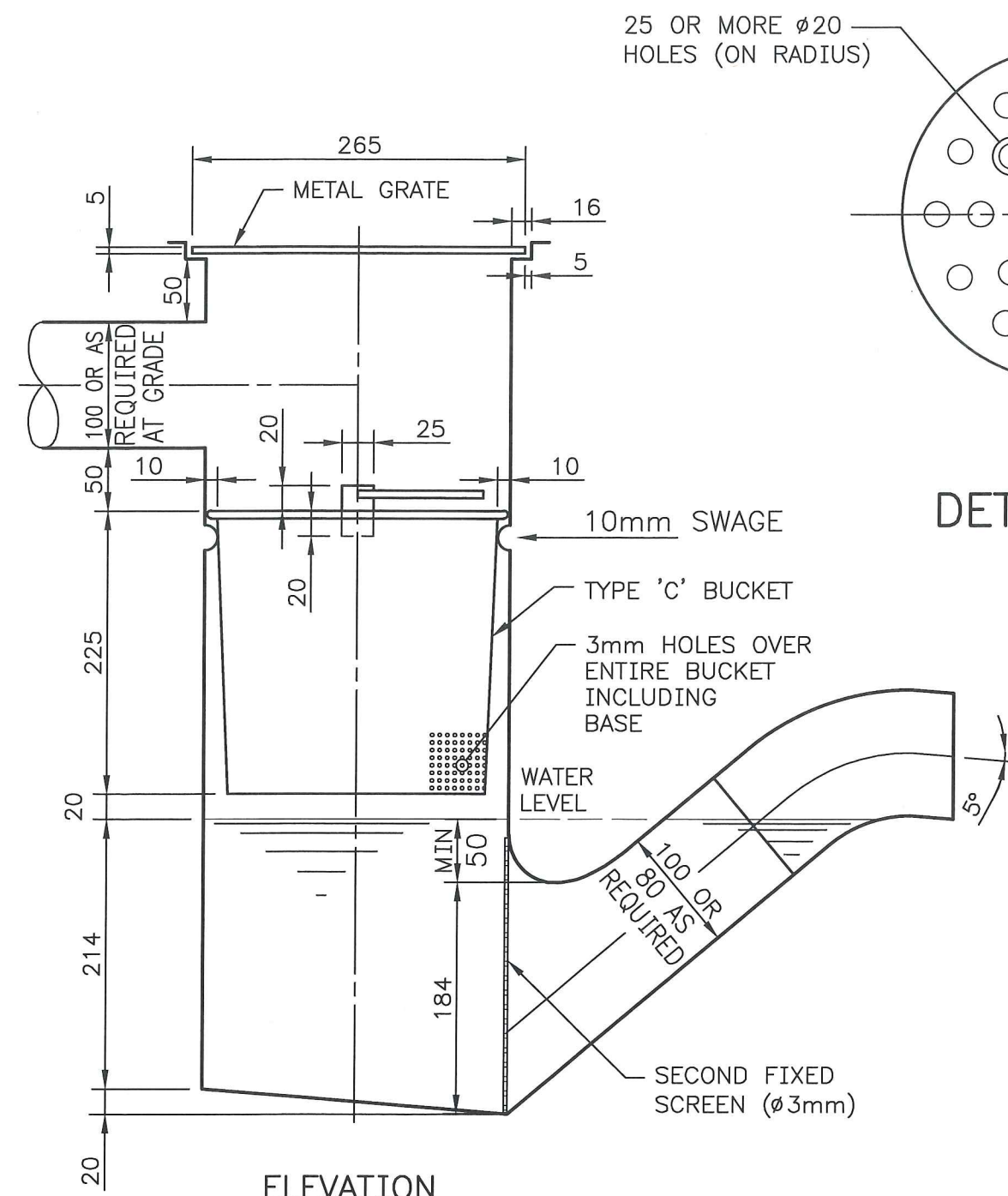
GUIDELINES

1. DIMENSIONS SHOWN ARE MINIMUM ACCEPTABLE SIZE ONLY.
2. BODY TYPE IS THE SAME FOR TYPE 'A' AND 'C' BUCKETS.
3. BUCKET TRAPS CONSTRUCTED FROM EARTHENWARE 230x100 OBLIQUE JUNCTIONS WILL NOT BE CONSIDERED.
4. A 100 TRADE WASTE TRAP MAY IN SOME INSTANCES BE USED IN LIEU OF A BT. FOR DETAILS OF TWT REFER TO TYPICAL DRAWING HX33-11-10.
5. ALL MEASUREMENTS SHOWN IN MILLIMETRES.
6. ALL ASSOCIATED PLUMBING WORK IS TO COMPLY WITH THE PLUMBERS LICENSING AND PLUMBING STANDARDS REGULATIONS 2000 (THE PLUMBING REGULATIONS) AND LATEST VERSIONS OF AS/NZS 3500.1 AND AS/NZS 3500.2.
7. BUCKET TRAP TO BE A WATER CORPORATION APPROVED PRODUCT. REFER TO WATER CORPORATION WEBSITE FOR LIST OF APPROVED PRODUCTS.

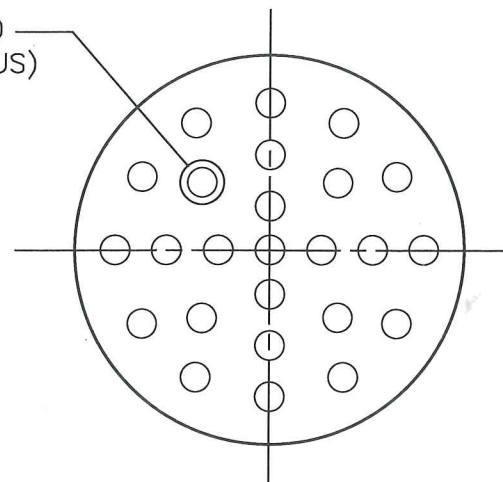
TYPE A – BUCKET TO BE USED WHERE THERE IS SAND, CLAY, PLASTER OR HEAVY SOLID MATERIAL WHICH MAY ENTER THE SEWER.

TYPE C – BUCKET TO BE USED IN ALL OTHER PROCESSES i.e. VEG PROCESSING, BUTCHERING ETC.

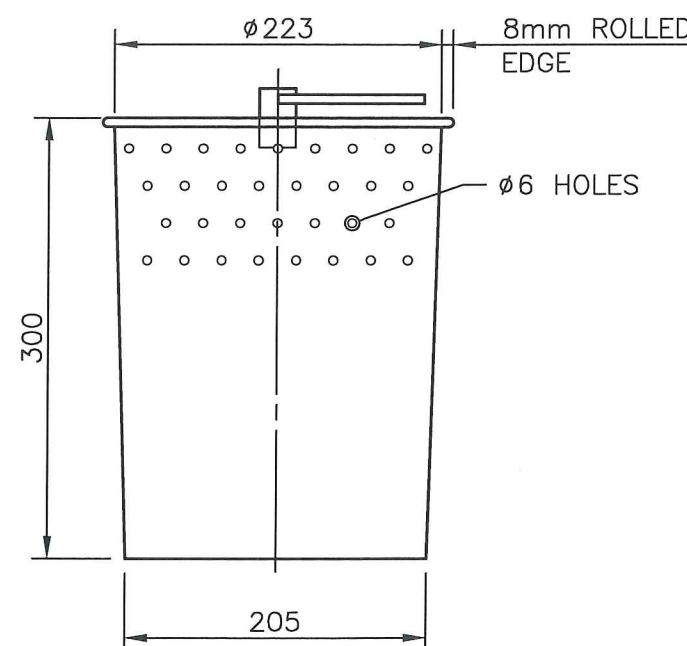
FOR FURTHER ADVICE CONTACT TRADE WASTE SECTION.



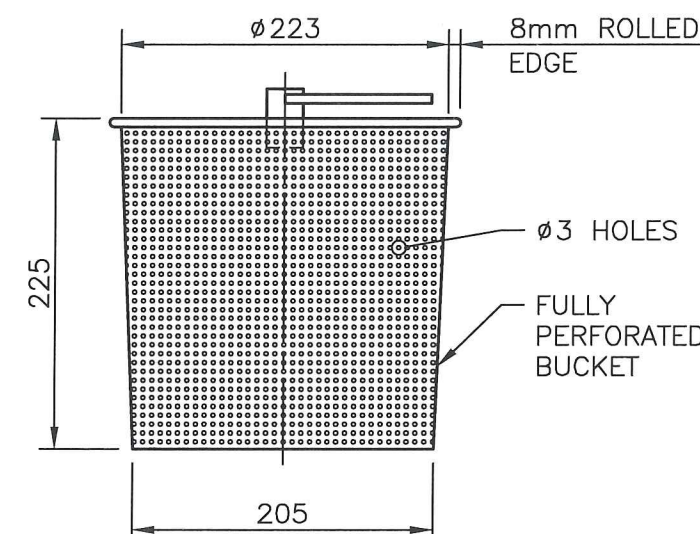
25 OR MORE ø20 HOLES (ON RADIUS)



PLAN
 ELEVATION
 DETAIL OF METAL GRATE



TYPE 'A' BUCKET



TYPE 'C' BUCKET

100 50 0 100 200 300 mm (1:5 AT A3)

E	02/2020		PLUMBING REGULATION TITLE UPDATED, NOTE 7 ADDED, FORMERLY TYPICAL DRAWING REFERENCE REMOVED	JMS		
D	07/2016		WEBSITE DETAILS ADDED, GUIDELINES AMENDED	BJ	SJ	MS
C	03/2014		SECOND FIXED SCREEN RELOCATED & DRG RE-DRAWN TO SCALE	AC	PR	MS
B	06/2009		NOTE 6 ADDED & TYPE 'B' CHANGED TO TYPE 'C'	RJ	GC	AM
ISSUE	DATE	GRID	REVISION	DRN	REC	APPD

DES CALC	RECOMMENDED	25/03/2014		WATER CORPORATION TYPICAL DRAWINGS FOR TRADE WASTE BUCKET TRAP	ORIGINAL SHEET SIZE A3
DES CHD	P. RANASINGHE (SIGNED)				
DRN	SUPERVISOR ASSESSMENT				
K MCGREGOR	APPROVED	25/03/2014			
Q.C. CHD	M. STARK (SIGNED)				
G CLEAVER	MANAGER, TRADE WASTES				
FILE	58535545	PLAN			
PROJECT		HX33-11-00			
		E			