

DIMENSIONS IN [ ] ARE IN MILLIMETERS

-	-	-	-	
-	-	-	-	
-	-	-	-	
M1	NOV2014	TB	DCD	FOR SUBMISSION
NO.	DATE	BY	CHK'D	REVISION

REFERENCE DRAWINGS	DWG NO.
--------------------	---------

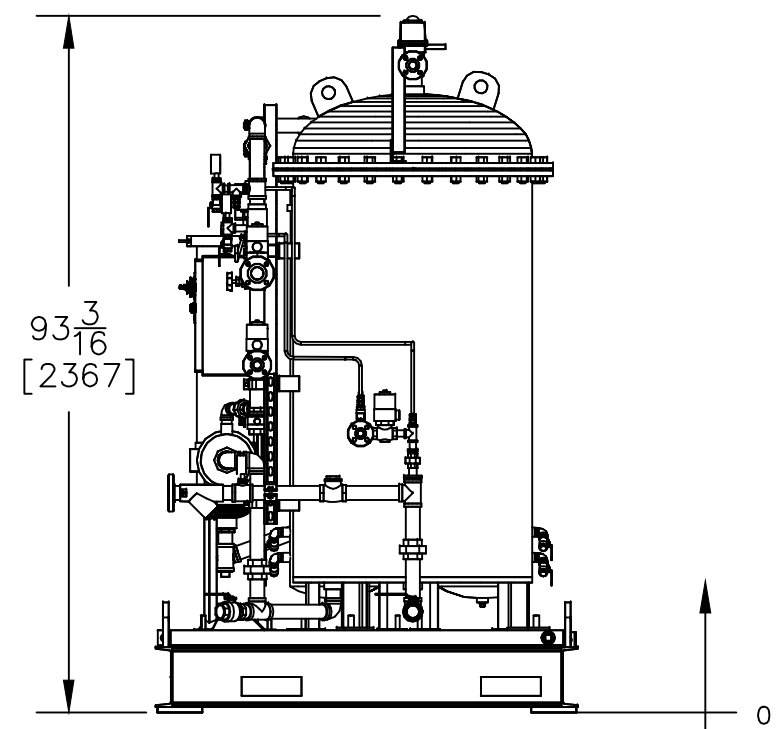
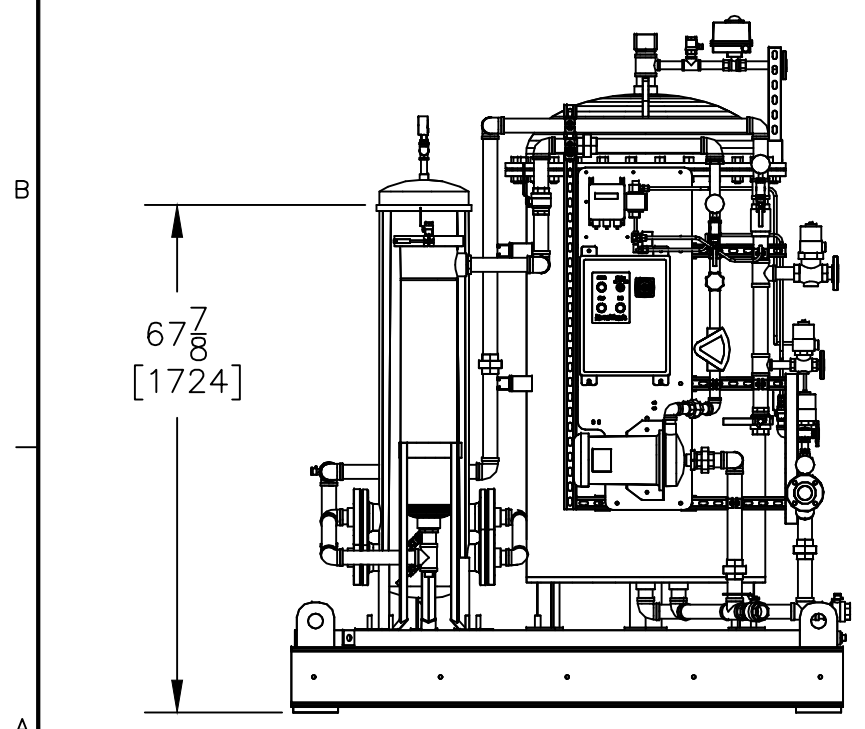
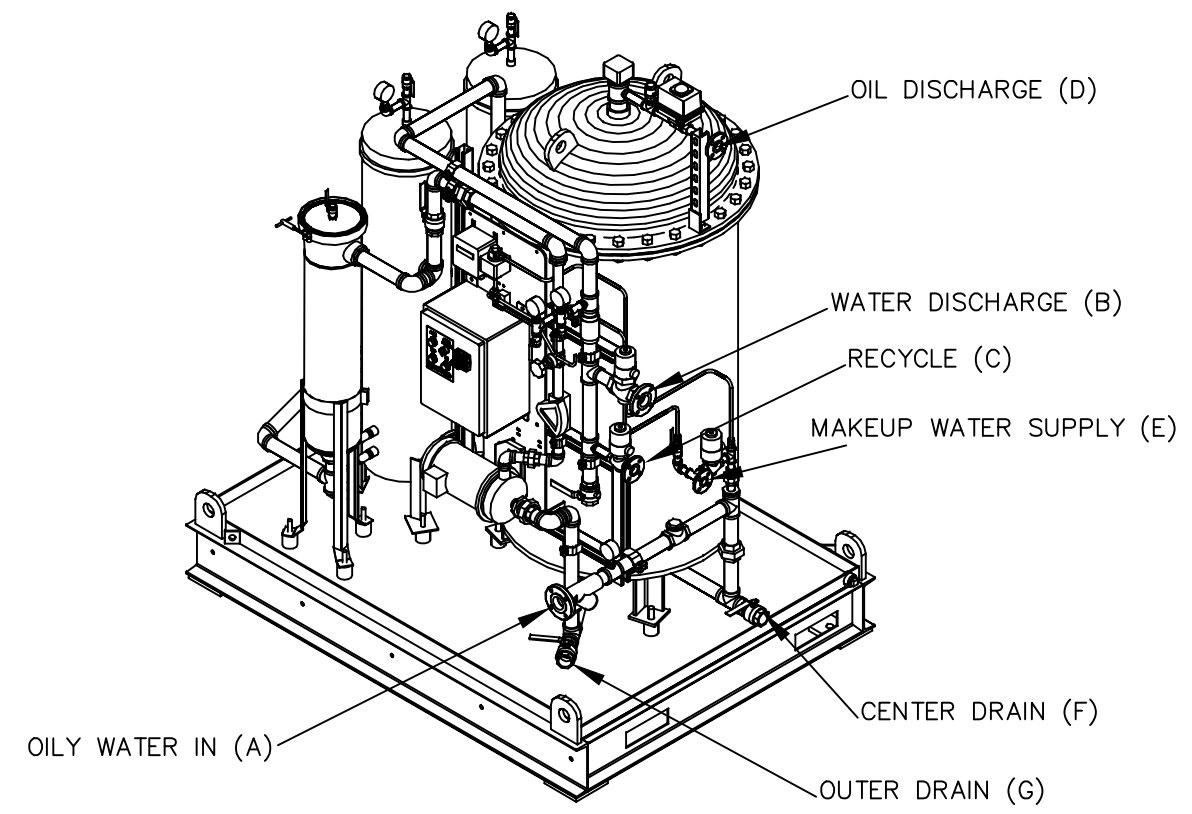
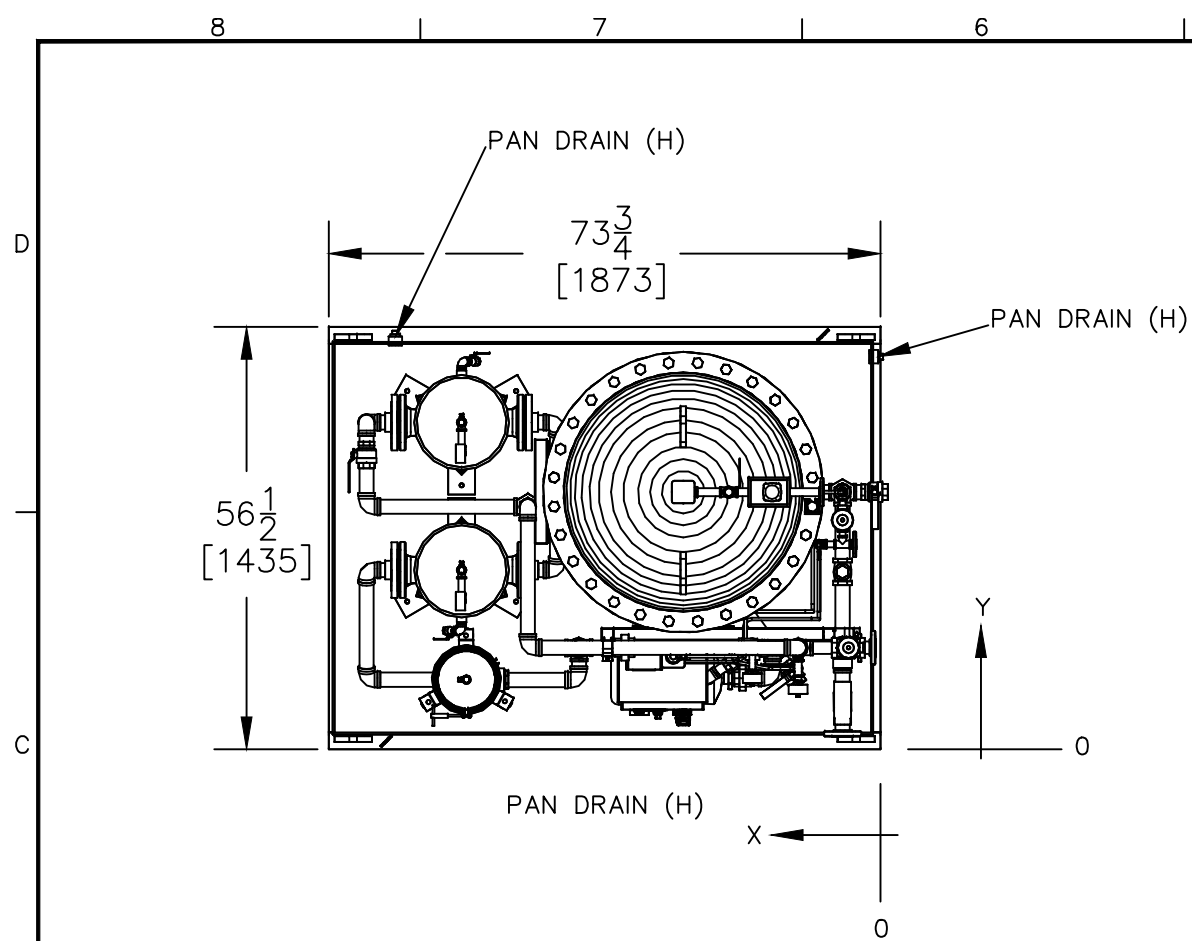
**MYCELX** 

TECHNOLOGIES CORPORATION  
 2420 Meadowbrook Pkwy  
 Duluth, Georgia 30096  
 888.306.6843, Fax 770.534.3117

5.0 M3/HR BILGE UNIT

LABELED VIEW

CUSTOMER: MYCELX				
DRAWN BY:	TB	JOB NO.	-	
CHECKED BY:	DCD	DATE:	DOCUMENT #	1 OF 9
SCALE:	NONE	NOV2014	5.0M3LBV001RM1	REV M1



NOTE: CONNECTION SCHEDULE IS THE ACTUAL CONNECTION SIZE TO THE UNIT. THE PIPING SCHEDULE IS THE RECOMMENDED PIPE RUN SIZING FOR BEST FLOW.

**CONNECTION SCHEDULE**

- (A) -OILY WATER INLET 1 1/2" 150# RF ANSI FLANGE
- (B) -WATER DISCHARGE 1 1/4" 150# RF ANSI FLANGE
- (C) -RECYCLE 3/4" 150# RF ANSI FLANGE
- (D) -OIL DISCHARGE 3/4" 150# RF ANSI FLANGE
- (E) -FILL WATER SUPPLY 1/2" 150# RF ANSI FLANGE
- (F) -CENTER DRAIN 1 1/2" NPT
- (G) -OUTER DRAIN 1 1/2" NPT
- (H) -PAN DRAIN 1" NPT SUPPLIED WITH PLUG (2 PLCS)

**PIPELINE RECOMMENDATIONS**

- 1 1/2" OILY WATER SUPPLY LINE
- 1 1/2" DISCHARGE LINE
- 3/4" RECYCLE LINE
- 3/4" OIL OUT LINE
- 1/2" FILL WATER IN LINE

**UTILITY REQUIREMENTS**

POWER:  
2.0 KW SERVICE 208-575VAC SINGLE OR 3 PHASE 50-60HZ 4 KVA  
MAKEUP WATER:  
15PSI, 5GPM CLEAN (NO OIL) FRESH OR SEA WATER  
CELL CLEAN:  
1-2 LITERS/DAY POTABLE WATER @5-10PSI  
NO AIR REQUIRED:

**PAINT SYSTEM**

BLAST SSPC SS-10 2.0-3.0 MIL PROFILE  
PRIMER COAT SHERWIN WILLIAMS  
RECOATABLE EPOXY PRIMER 4-6 MIL DRY  
TOP COAT SHERWIN WILLIAMS  
HIGH SOLIDS POLYUREATHANE 2-3 MILS DRY  
RAL 7035 MED SILVER GREY

DRY WEIGHT 2800 lbs 1270 kg's  
WET WEIGHT 4900 lbs 2223 kg's

DIMENSIONS IN [ ] ARE IN MILLIMETERS

MI	NOV2014	TB	DCD	FOR SUBMISSION
NO.	DATE	BY	CHK'D	REVISION
REFERENCE DRAWINGS				DWG NO.

**MYCELX** 

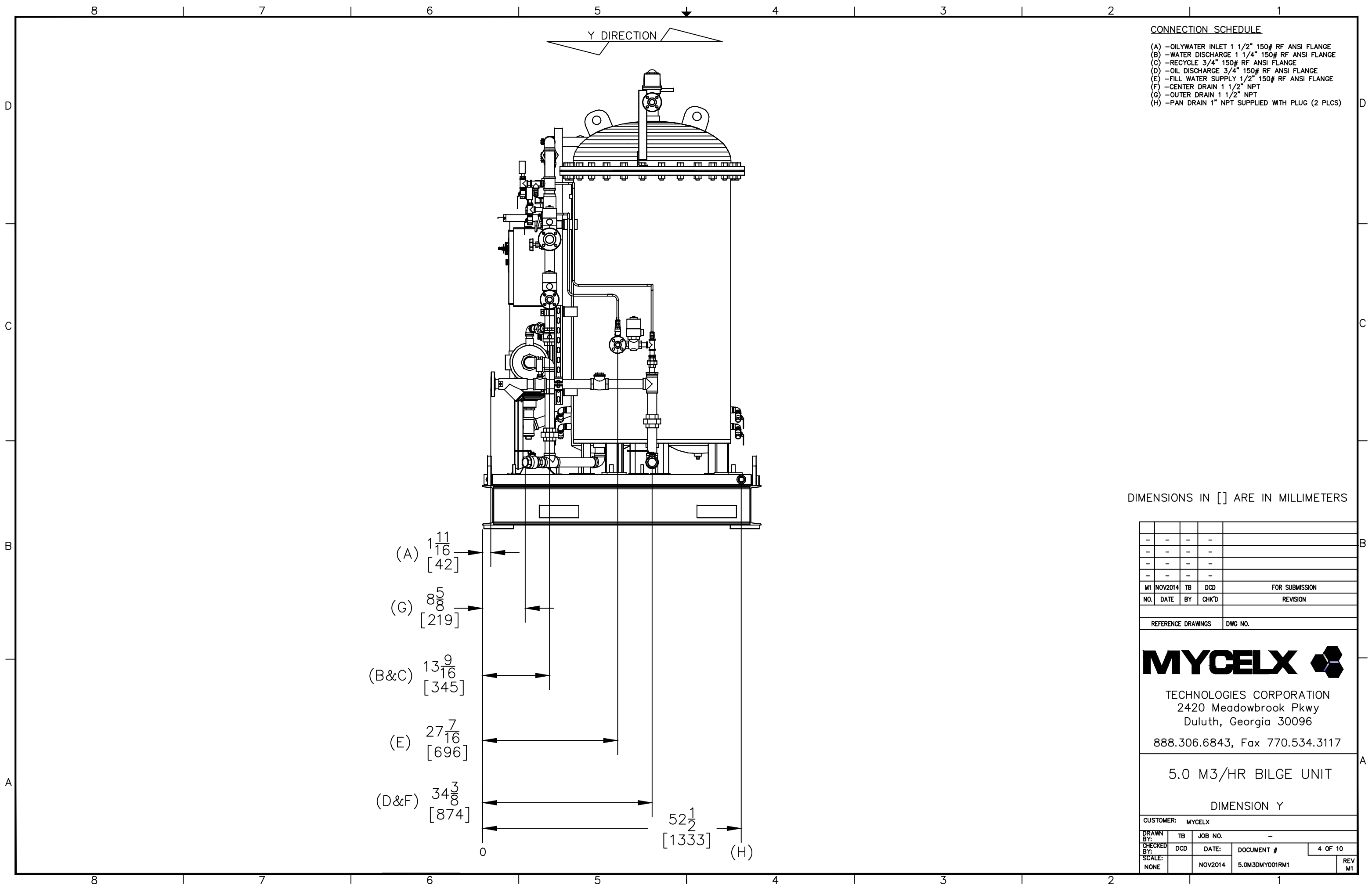
TECHNOLOGIES CORPORATION  
2420 Meadowbrook Pkwy  
Duluth, Georgia 30096  
888.306.6843, Fax 770.534.3117

5.0 M3/HR BILGE UNIT

GENERAL ARRANGEMENT

CUSTOMER: MYCELX				
DRAWN BY:	TB	JOB NO.	-	
CHECKED BY:	DCD	DATE:	DOCUMENT #	2 OF 10
SCALE:	NONE	DEC2014	5.0M3GNA001RM1	REV M1






- CONNECTION SCHEDULE**
- (A) - OILY WATER INLET 1 1/2" 150# RF ANSI FLANGE
  - (B) - WATER DISCHARGE 1 1/4" 150# RF ANSI FLANGE
  - (C) - RECYCLE 3/4" 150# RF ANSI FLANGE
  - (D) - OIL DISCHARGE 3/4" 150# RF ANSI FLANGE
  - (E) - FILL WATER SUPPLY 1/2" 150# RF ANSI FLANGE
  - (F) - CENTER DRAIN 1 1/2" NPT
  - (G) - OUTER DRAIN 1 1/2" NPT
  - (H) - PAN DRAIN 1" NPT SUPPLIED WITH PLUG (2 PLCS)

DIMENSIONS IN [ ] ARE IN MILLIMETERS

-	-	-	-	
-	-	-	-	
-	-	-	-	
-	-	-	-	
M1	NOV2014	TB	DCD	FOR SUBMISSION
NO.	DATE	BY	CHK'D	REVISION

REFERENCE DRAWINGS      DWG NO.

**MYCELX** 

TECHNOLOGIES CORPORATION  
 2420 Meadowbrook Pkwy  
 Duluth, Georgia 30096  
 888.306.6843, Fax 770.534.3117

**5.0 M3/HR BILGE UNIT**

DIMENSION Y

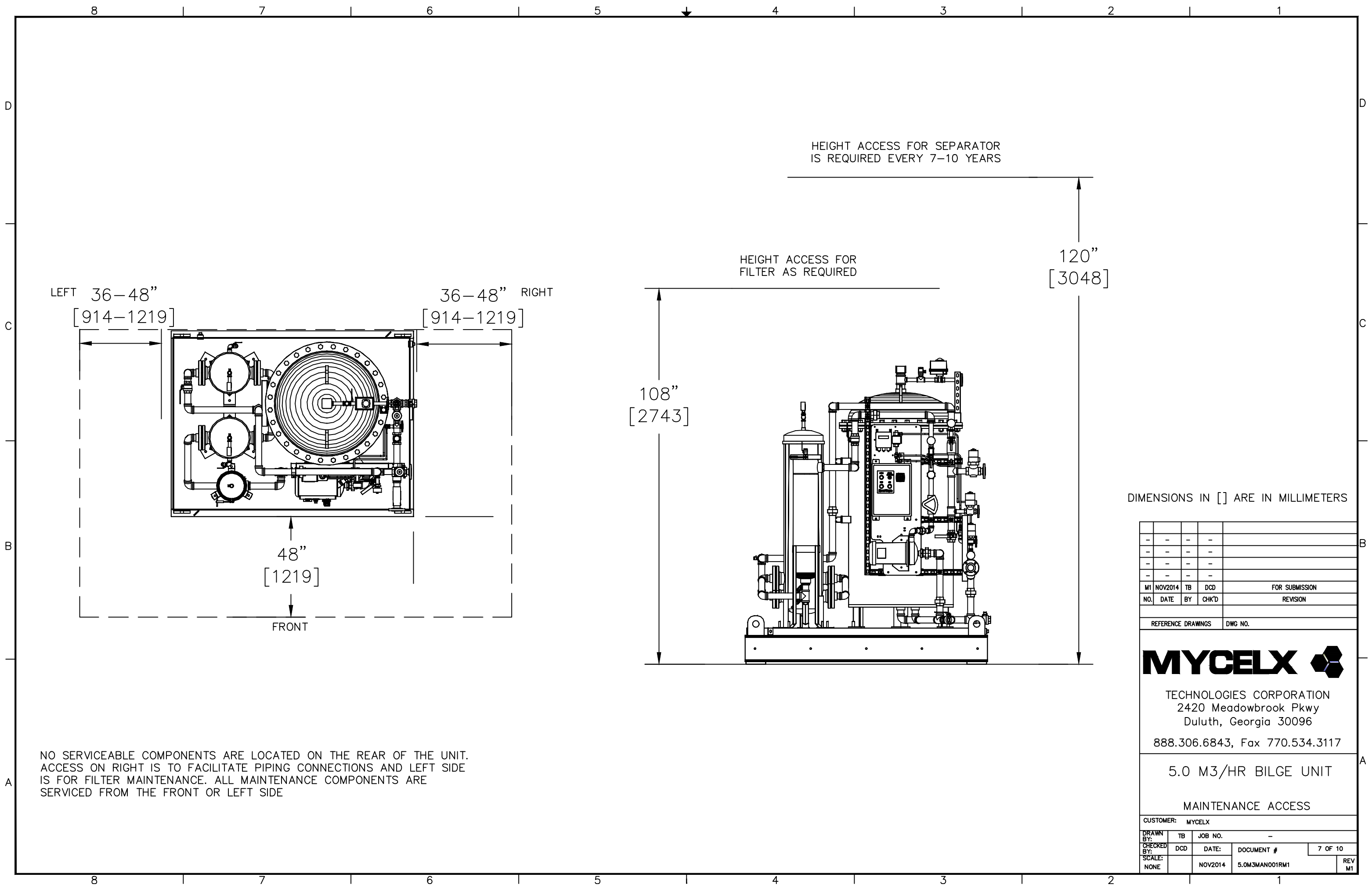
CUSTOMER: MYCELX

DRAWN BY:	TB	JOB NO.	-
CHECKED BY:	DCD	DATE:	
SCALE:	NONE	NOV2014	5.0M3DMY001RM1
			4 OF 10
			REV M1



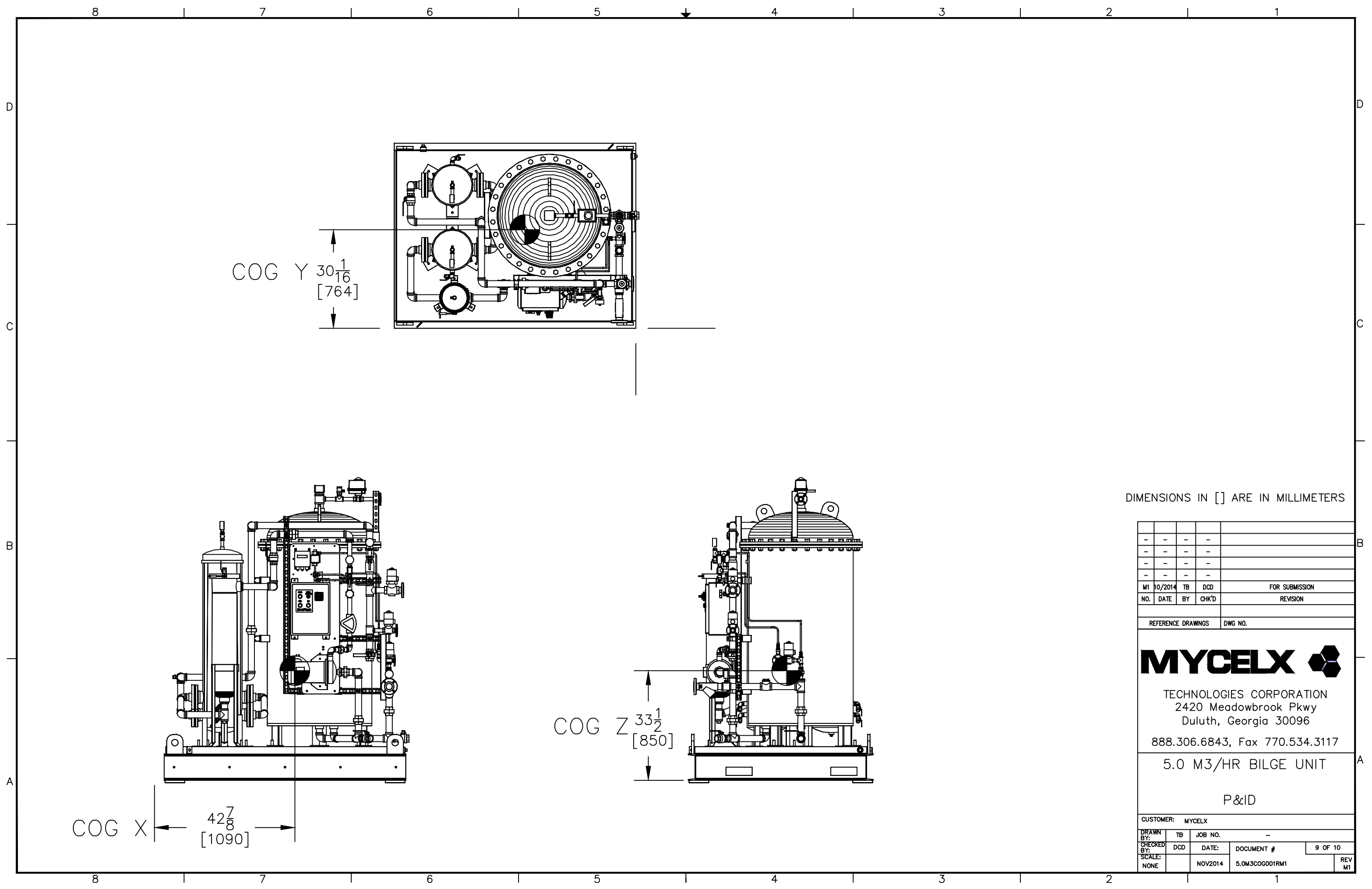












DIMENSIONS IN [ ] ARE IN MILLIMETERS

-	-	-	-	
-	-	-	-	
-	-	-	-	
-	-	-	-	
M1	10/2014	TB	DCD	FOR SUBMISSION
NO.	DATE	BY	CHK'D	REVISION

REFERENCE DRAWINGS	DWG NO.
--------------------	---------

**MYCELX** 

TECHNOLOGIES CORPORATION  
 2420 Meadowbrook Pkwy  
 Duluth, Georgia 30096  
 888.306.6843, Fax 770.534.3117

5.0 M3/HR BILGE UNIT

P&ID


CUSTOMER: MYCELX				
DRAWN BY:	TB	JOB NO.	-	
CHECKED BY:	DCD	DATE:	DOCUMENT #	9 OF 10
SCALE:	NONE	NOV2014	5.0M3COG001RM1	REV M1



D  
C  
B  
A

BILL OF MATERIAL			
#	QTY	DESCRIPTION	PART NUMBER
1	1	25 PAINTED VESSEL	60124
2	28	BOLT, HEX - 45778 - 5/8"X3, SAE J429 GR8 YELLOW ZINC	40316
3	28	NUT - YELLOW ZINC - 5/8"-11, FINISH, SAE J995 GR8	40338
4	56	WASHER - YELLOW ZINC - 5/8" SAE, THRU HARD	40345
5	1	GASKET - TOP, 25 - NEOPRENE - 37.125 OD X .025	50538
6	1	FLOW INDICATOR - BRONZE - 3 - 30 GPM	40368
7	1	VALVE GATE - BRONZE - 1 GATE	40850
8	10	VALVE BALL - BRONZE - .5 BALL	40837
9	1	VALVE BALL - BRONZE -.75 BALL	40840
10	5	VALVE BALL - BRONZE - 1.5 BALL	40852
11	1	VALVE CHECK - BRONZE - 1.5 CHECK SWING	40854
12	1	VALVE CHECK - BRONZE - 1.5 CHECK SPRING	40853
13	1	Y-STRAINER - THR - BRONZE - 1.5 IN 125# 80MESH	40618
14	1	BILGMON 488 - MONITOR - 15 PPM, 115 VAC	40458
15	1	CONTROL PANEL - THREE PHASE - 304SS ENCLOSURE - *MUST ADD THERMAL OVERLOAD*	60537
16	1	FLANGE - 0.5 IN, RF, 150#, THREADED SA105	40639
17	2	FLANGE - 0.75 IN, RF, 150#, THREADED SA105	40644
18	1	FLANGE - 1.25 IN, RF, 150#, THREADED SA105	41252
19	5	FLANGE - 1.5 IN, RF, 150#, THREADED SA105	40659
20	1	BACKPLATE - CONTROL PANEL, LARGE - A1011 - 39 X 15 X 0.134	50123
21	4	GAUGE - PRESSURE - 2.5" 100PSI/BAR, 316 STAINLESS STEM 1/4" LM, GLYCOL	41178
22	1	GAUGE - VACUUM - 2.5" HG/15PSI - 316 STAINLESS STEM 1/4" LM, GLYCOL	41177
23	11	UNISTRUT END CAPS - GREEN/GREY -	40024
24	1	SOLENOID VALVE - 18A42 - BRONZE - 0.5", 120 VAC 50/60	40391
25	1	SOLENOID VALVE - 18A43 - BRONZE - 0.75", 120 VAC 50/60	40395
26	1	SOLENOID VALVE - 18A45 - BRONZE - 1.25", 120 VAC 50/60	40402
27	1	MOV VALVE BODY - BRONZE - 0.75"	40386
28	1	MOV - NEMA 4 - VALVSYS - 125 IN LBS/115 VAC	40380
29	1	LEVEL SERIES 3E3B PROBE BASE - RED BRASS - 2"	40375
30	1	CDU120/5 2 HP50/60HZ 208-460VAC	60171
31	1	TUBING KIT - ACETAL GREY	60210
32	2	STRUT - 14 INCH	50388
33	1	STRUT - MYCELX 25, - FRONT	50898
34	1	BRACKET - MOV BRACE	50783
35	1	SKID - ASSEMBLY, 25M(5.0)	50903
36	1	LEVEL PROBE SET - 16" (11/25)..	60192
36	2	MYCELX M 12 FILTER	SUPPLIED BY MYCELX
36	1	MYCELX BAG FILTER	SUPPLIED BY MYCELX

DIMENSIONS IN [ ] ARE IN MILLIMETERS

-	-	-	-	-
-	-	-	-	-
-	-	-	-	-
-	-	-	-	-
M1	MAR2015	TB	DCD	FOR SUBMISSION
NO.	DATE	BY	CHK'D	REVISION
REFERENCE DRAWINGS		DWG NO.		
<b>MYCELX</b> 				
TECHNOLOGIES CORPORATION 2420 Meadowbrook Pkwy Duluth, Georgia 30096 888.306.6843, Fax 770.534.3117				
5.0 M3/HR BILGE UNIT				
BILL OF MATERIAL				
CUSTOMER: MYCELX				
DRAWN BY:	TB	JOB NO.	-	
CHECKED BY:	DCD	DATE:	DOCUMENT #	1 OF 1
SCALE:	NONE	MAR2015	5.0M3BOM001RM1	REV M1