

DIMENSIONS IN [] ARE IN MILLIMETERS

-	-	-	-	
-	-	-	-	
-	-	-	-	

M1	DEC2014	TB	DCD	FOR SUBMISSION
NO.	DATE	BY	CHK'D	REVISION

REFERENCE DRAWINGS DWG NO.

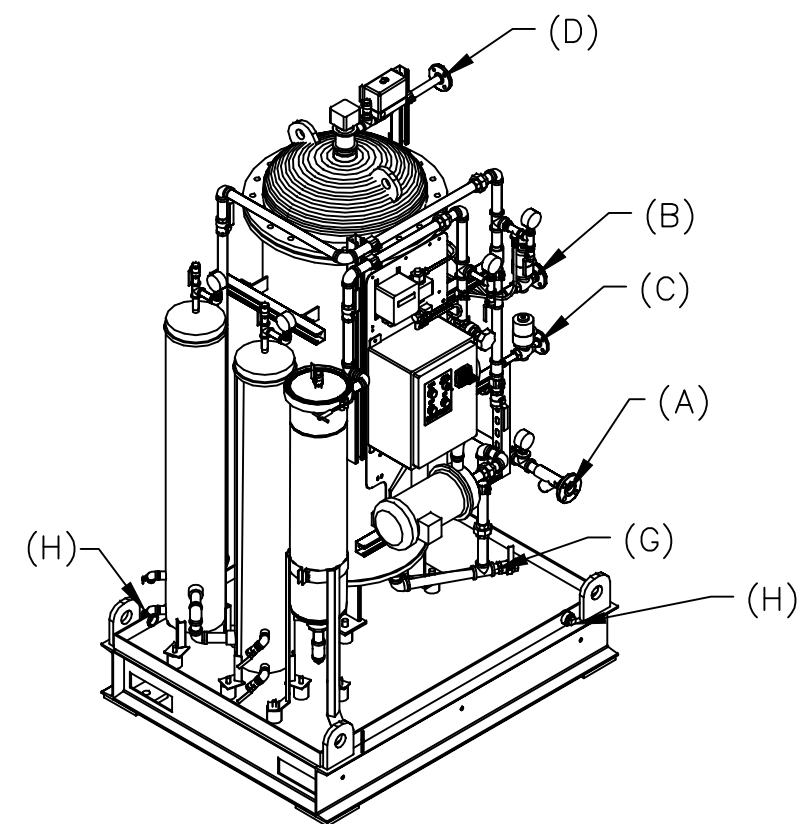
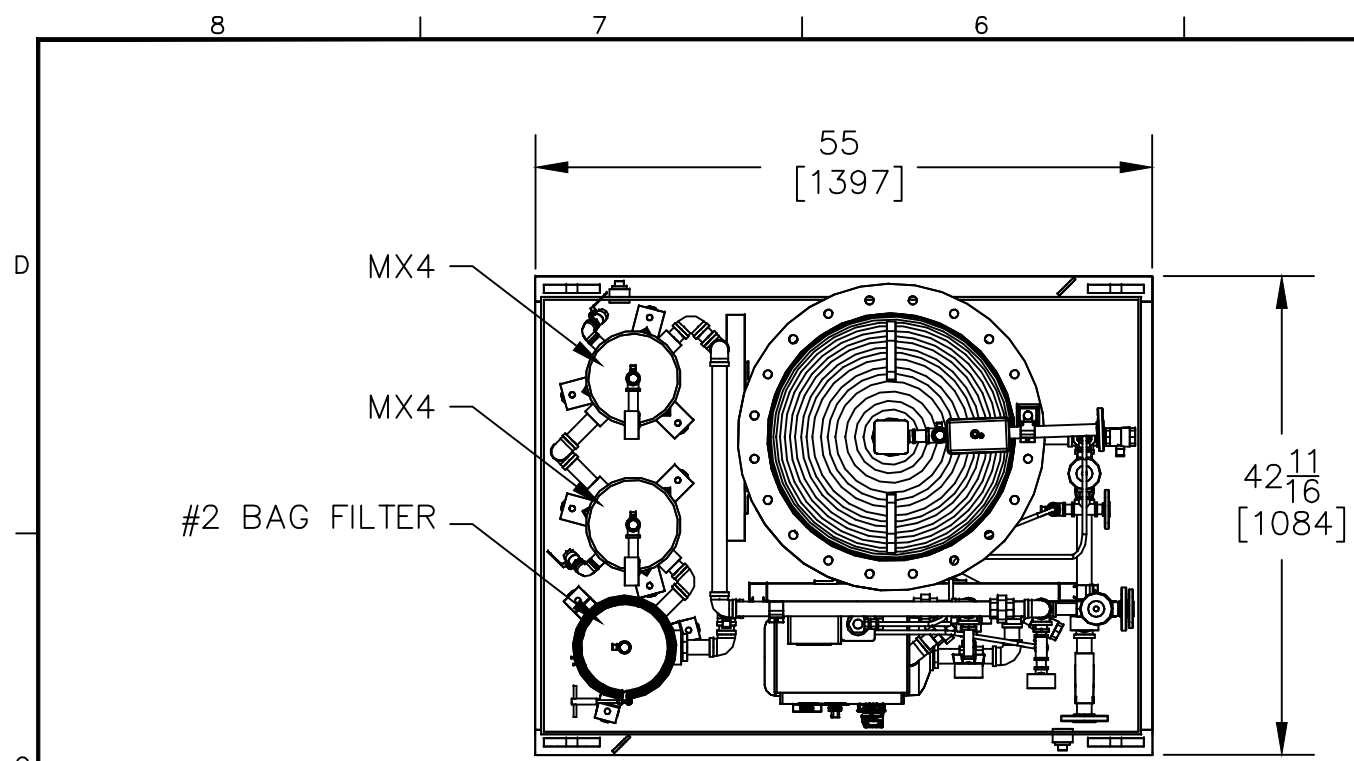


TECHNOLOGIES CORPORATION
 2420 Meadowbrook Pkwy.
 Duluth, Georgia 30096
 888.306.6843, Fax 770.534.3117

2.5 M3/HR BILGE UNIT

LABELED VIEW

CUSTOMER: TBD				
DRAWN BY:	TB	JOB NO.	TBD	
CHECKED BY:	DCD	DATE:	DOCUMENT #	1 OF 9
SCALE:	NONE	DEC2014	2.5M3LBV001RM1	REV M1.1



- CONNECTION SCHEDULE**
- (A) - OILY WATER INLET 1" 150# RF ANSI FLANGE
 - (B) - WATER DISCHARGE 1" 150# RF ANSI FLANGE
 - (C) - RECYCLE 1/2" 150# RF ANSI FLANGE
 - (D) - OIL DISCHARGE 3/4" 150# RF ANSI FLANGE
 - (E) - FILL WATER SUPPLY 1/2" 150# RF ANSI FLANGE
 - (F) - CENTER DRAIN 1" NPT
 - (G) - OUTER DRAIN 1" NPT
 - (H) - PAN DRAIN CONNECTION 1" NPT WITH PLUG

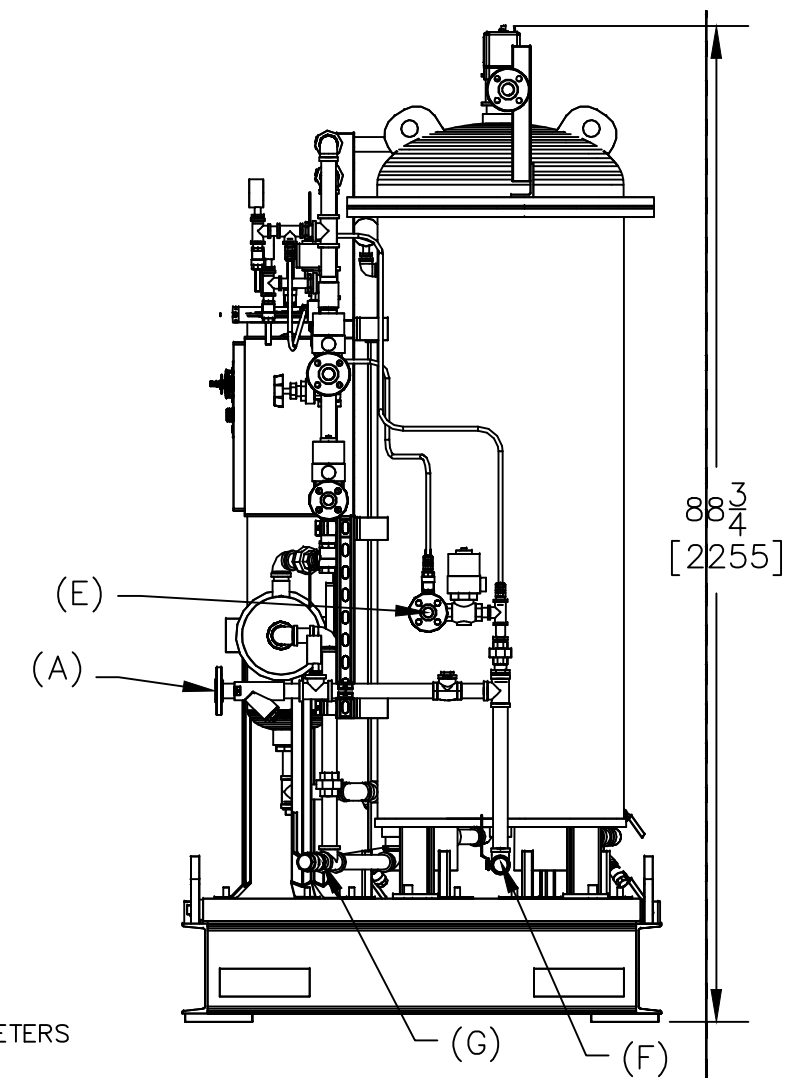
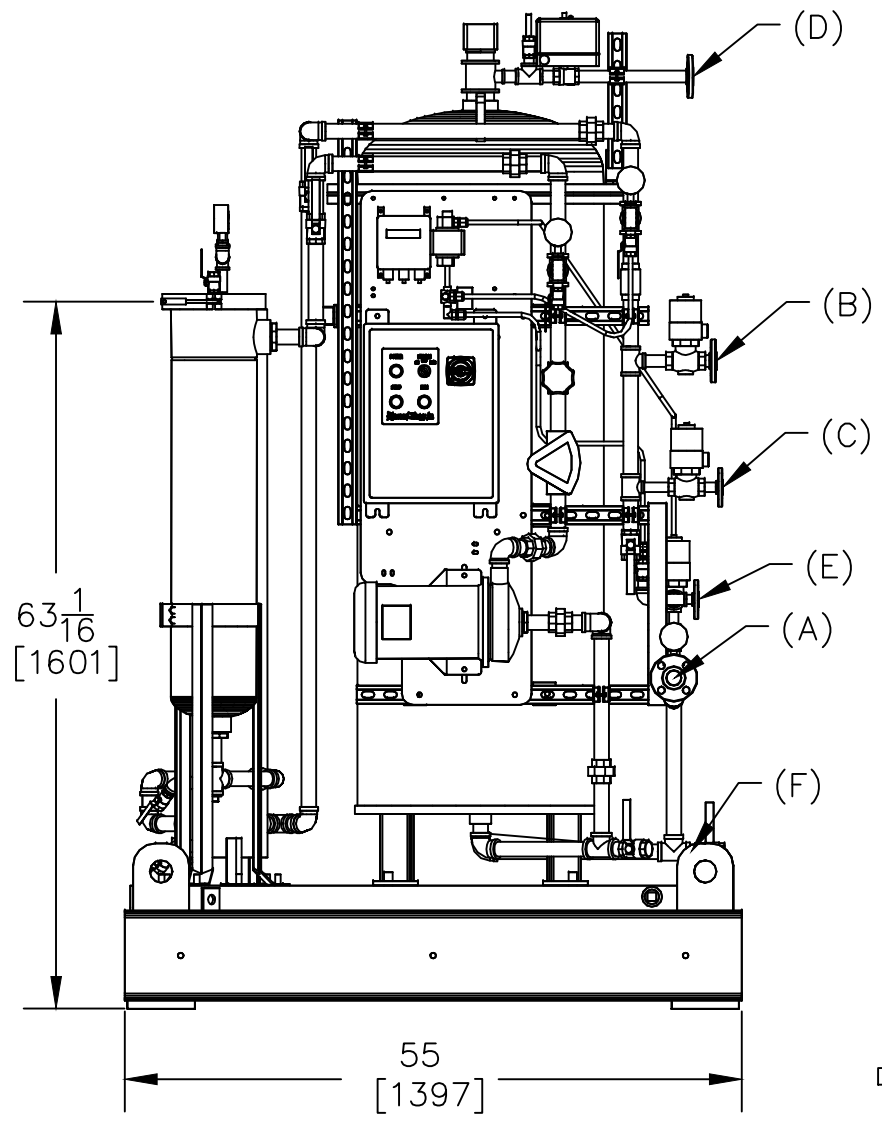
- PIPELINE RECOMMENDATIONS**
- 1" OILY WATER SUPPLY LINE
 - 1" DISCHARGE LINE
 - 1/2" RECYCLE LINE
 - 3/4" OIL OUT LINE
 - 1/2" FILL WATER IN LINE

- UTILITY REQUIREMENTS**
- POWER: 2.0 KW SERVICE 120-575VAC SINGLE OR 3 PHASE 50-60HZ 4 KVA
- MAKEUP WATER: 15PSI, 5GPM CLEAN (NO OIL) FRESH OR SEA WATER
- CELL CLEAN: 1-2 LITERS/DAY POTABLE WATER @5-10PSI
- NO AIR REQUIRED:

- PAINT SYSTEM**
- BLAST SSPC SS-10 2.0-3.0 MIL PROFILE
 - PRIMER COAT SHERWIN WILLIAMS
 - RECOATABLE EPOXY PRIMER 4-6 MIL DRY
 - TOP COAT SHERWIN WILLIAMS
 - HIGH SOLIDS POLYUREATHANE 2-3 MILS DRY
 - RAL 7035 MED SILVER GREY

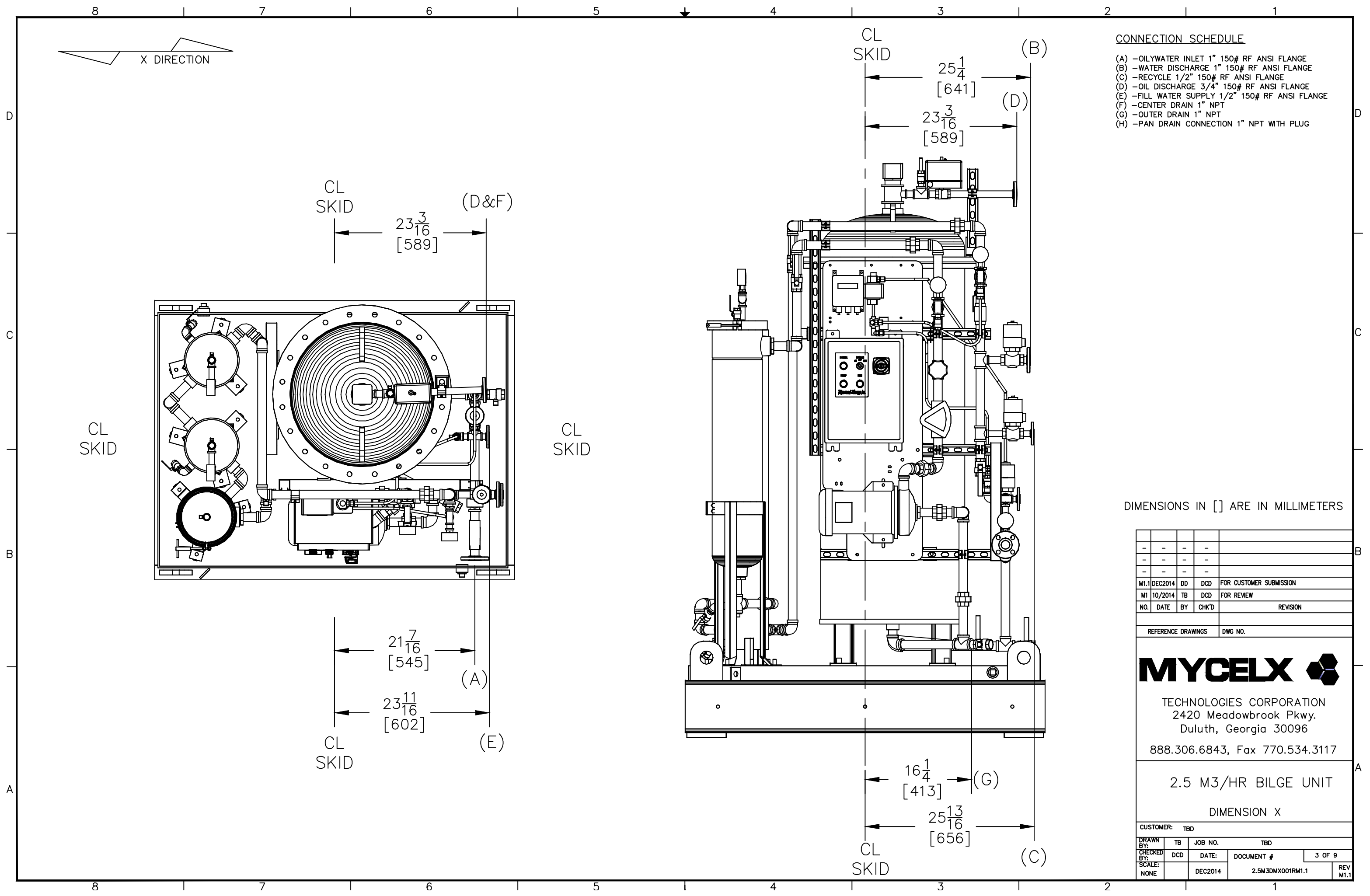
DRY WEIGHT 1350 lbs 612 kg's
WET WEIGHT 2200 lbs 998 kg's

NOTE: CONNECTION SCHEDULE IS THE ACTUAL CONNECTION SIZE TO THE UNIT. THE PIPING SCHEDULE IS THE RECOMMENDED PIPE RUN SIZING FOR BEST FLOW.



DIMENSIONS IN [] ARE IN MILLIMETERS

-	-	-	-	
-	-	-	-	
-	-	-	-	
M1.1	DEC2014	DD	DCD	FOR CUSTOMER SUBMISSION
M1	10/2014	TB	DCD	FOR REVIEW
NO.	DATE	BY	CHK'D	REVISION
REFERENCE DRAWINGS				DWG NO.
MYCELX				
TECHNOLOGIES CORPORATION 2420 Meadowbrook Pkwy. Duluth, Georgia 30096 888.306.6843, Fax 770.534.3117				
2.5 M3/HR BILGE UNIT				
GENERAL ARRANGEMENT				
CUSTOMER: TBD				
DRAWN BY:	TB	JOB NO.	-	
CHECKED BY:	DCD	DATE:	DOCUMENT #	2 OF 9
SCALE:	DEC2014		2.5M3GNA001RM1.1	REV M1.1



CONNECTION SCHEDULE

- (A) - OILY WATER INLET 1" 150# RF ANSI FLANGE
- (B) - WATER DISCHARGE 1" 150# RF ANSI FLANGE
- (C) - RECYCLE 1/2" 150# RF ANSI FLANGE
- (D) - OIL DISCHARGE 3/4" 150# RF ANSI FLANGE
- (E) - FILL WATER SUPPLY 1/2" 150# RF ANSI FLANGE
- (F) - CENTER DRAIN 1" NPT
- (G) - OUTER DRAIN 1" NPT
- (H) - PAN DRAIN CONNECTION 1" NPT WITH PLUG

DIMENSIONS IN [] ARE IN MILLIMETERS

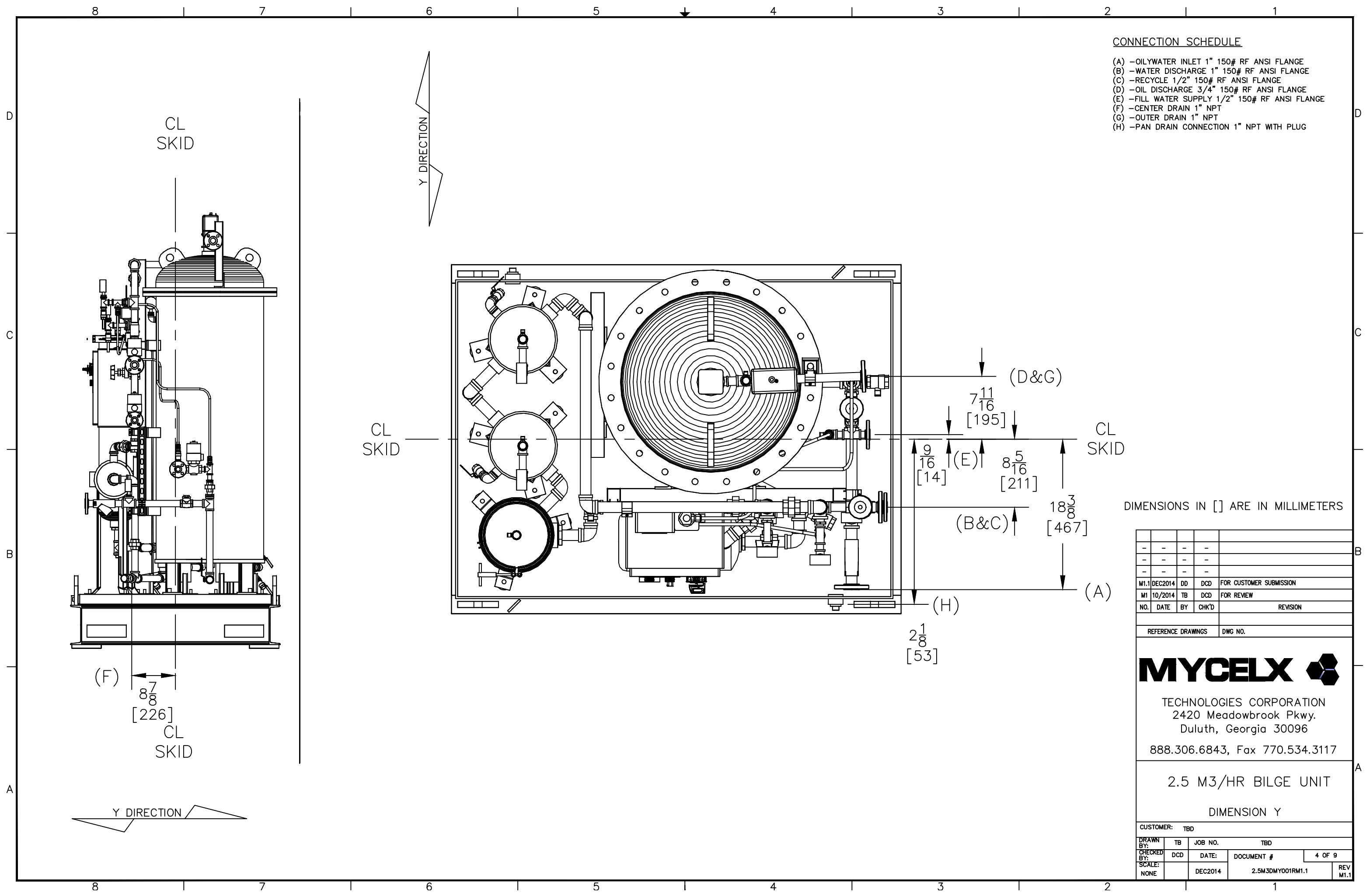
-	-	-	-	
-	-	-	-	
-	-	-	-	
M1.1	DEC2014	DD	DCD	FOR CUSTOMER SUBMISSION
M1	10/2014	TB	DCD	FOR REVIEW
NO.	DATE	BY	CHK'D	REVISION
REFERENCE DRAWINGS				DWG NO.

MYCELX 

TECHNOLOGIES CORPORATION
 2420 Meadowbrook Pkwy.
 Duluth, Georgia 30096
 888.306.6843, Fax 770.534.3117

2.5 M3/HR BILGE UNIT
 DIMENSION X

CUSTOMER: TBD				
DRAWN BY:	TB	JOB NO.	TBD	
CHECKED BY:	DCD	DATE:	DOCUMENT #	3 OF 9
SCALE:	NONE	DEC2014	2.5M3DMX001RM1.1	REV M1.1



- CONNECTION SCHEDULE**
- (A) - OILY WATER INLET 1" 150# RF ANSI FLANGE
 - (B) - WATER DISCHARGE 1" 150# RF ANSI FLANGE
 - (C) - RECYCLE 1/2" 150# RF ANSI FLANGE
 - (D) - OIL DISCHARGE 3/4" 150# RF ANSI FLANGE
 - (E) - FILL WATER SUPPLY 1/2" 150# RF ANSI FLANGE
 - (F) - CENTER DRAIN 1" NPT
 - (G) - OUTER DRAIN 1" NPT
 - (H) - PAN DRAIN CONNECTION 1" NPT WITH PLUG

DIMENSIONS IN [] ARE IN MILLIMETERS

-	-	-	-	
M1.1	DEC2014	DD	DCD	FOR CUSTOMER SUBMISSION
M1	10/2014	TB	DCD	FOR REVIEW
NO.	DATE	BY	CHK'D	REVISION
REFERENCE DRAWINGS		DWG NO.		

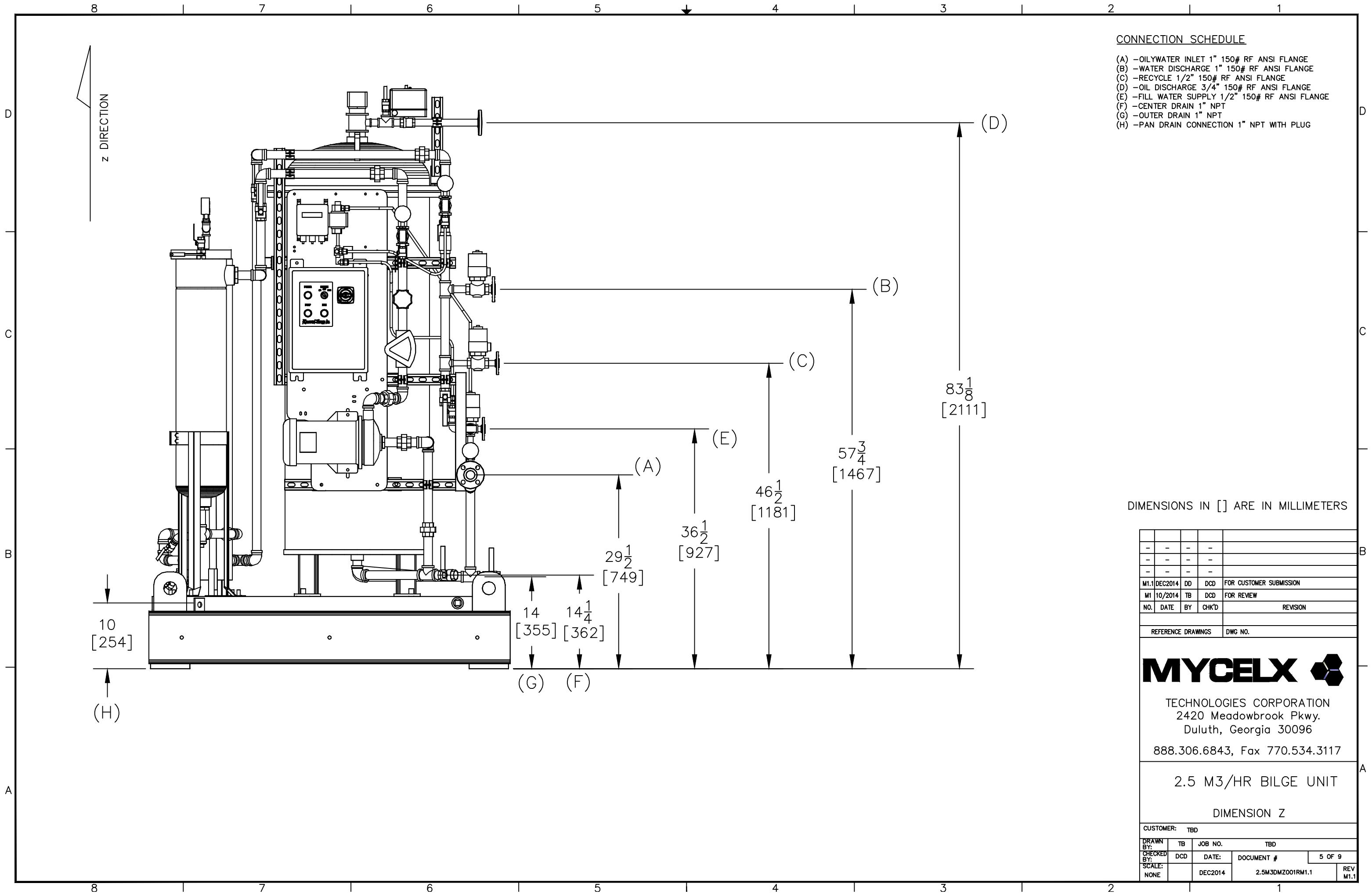
MYCELX 

TECHNOLOGIES CORPORATION
 2420 Meadowbrook Pkwy.
 Duluth, Georgia 30096
 888.306.6843, Fax 770.534.3117

2.5 M3/HR BILGE UNIT

DIMENSION Y

CUSTOMER: TBD				
DRAWN BY:	TB	JOB NO.	TBD	
CHECKED BY:	DCD	DATE:	DOCUMENT #	4 OF 9
SCALE:	NONE	DEC2014	2.5M3DMY001RM1.1	REV M1.1



CONNECTION SCHEDULE

- (A) - OILY WATER INLET 1" 150# RF ANSI FLANGE
- (B) - WATER DISCHARGE 1" 150# RF ANSI FLANGE
- (C) - RECYCLE 1/2" 150# RF ANSI FLANGE
- (D) - OIL DISCHARGE 3/4" 150# RF ANSI FLANGE
- (E) - FILL WATER SUPPLY 1/2" 150# RF ANSI FLANGE
- (F) - CENTER DRAIN 1" NPT
- (G) - OUTER DRAIN 1" NPT
- (H) - PAN DRAIN CONNECTION 1" NPT WITH PLUG

DIMENSIONS IN [] ARE IN MILLIMETERS

-	-	-	-	
-	-	-	-	
-	-	-	-	
M1.1	DEC2014	DD	DCD	FOR CUSTOMER SUBMISSION
M1	10/2014	TB	DCD	FOR REVIEW
NO.	DATE	BY	CHK'D	REVISION

REFERENCE DRAWINGS	DWG NO.
--------------------	---------

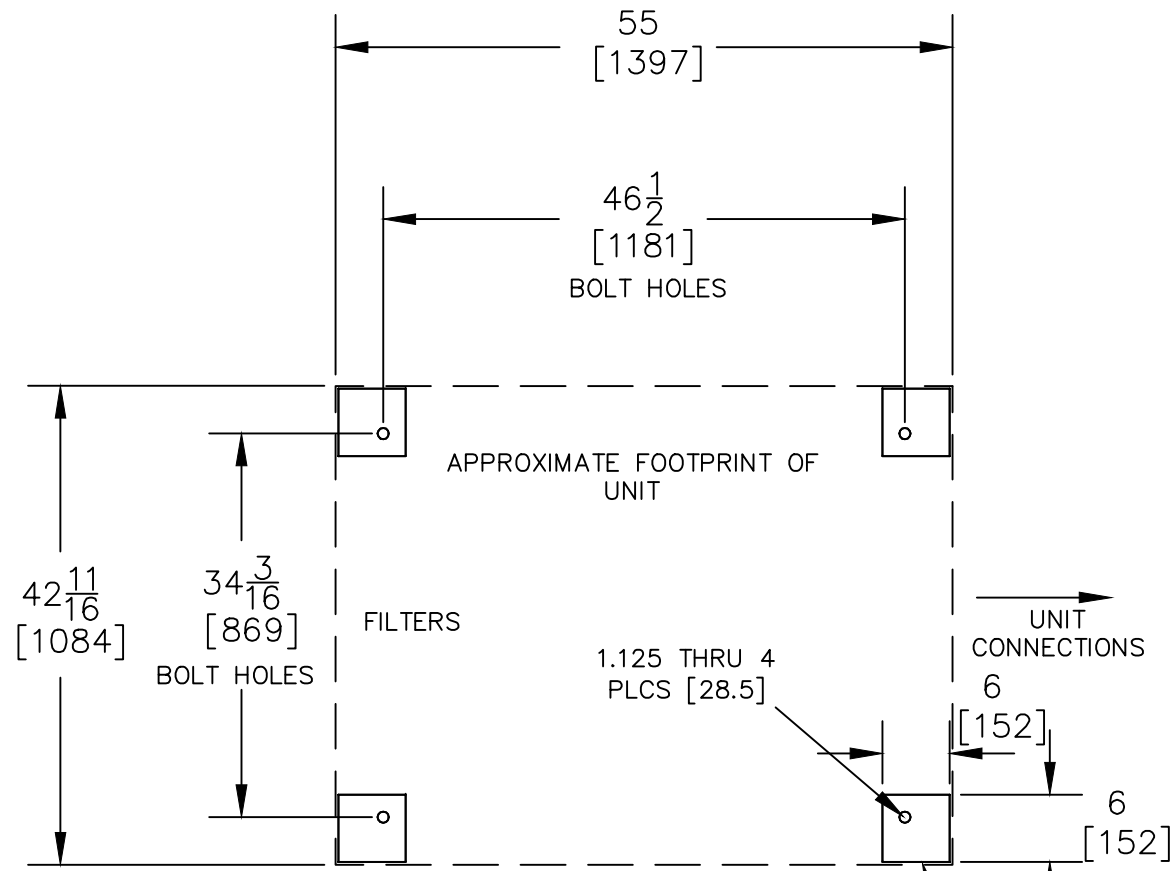


TECHNOLOGIES CORPORATION
 2420 Meadowbrook Pkwy.
 Duluth, Georgia 30096
 888.306.6843, Fax 770.534.3117

2.5 M3/HR BILGE UNIT
 DIMENSION Z

CUSTOMER: TBD				
DRAWN BY:	TB	JOB NO.	TBD	
CHECKED BY:	DCD	DATE:	DOCUMENT #	5 OF 9
SCALE:	NONE	DEC2014	2.5M3DMZ001RM1.1	REV M1.1

PLAN VIEW



BILL OF MATERIAL			
#	QTY	DESCRIPTION	PART NUMBER
1	1	11 PAINTED VESSEL	60122
2	20	BOLT, HEX - 45778 - 5/8"X3, SAE J429 GR8 YELLOW ZINC	40316
3	20	NUT - YELLOW ZINC - 5/8"-11, FINISH, SAE J995 GR8	40338
4	40	WASHER - YELLOW ZINC - 5/8" SAE, THRU HARD	40345
5	1	GASKET - TOP, 11 - NEOPRENE - 27.375 OD X 0.25	50533
6	1	FLOW INDICATOR - BRONZE - 1.5 - 15 GPM	40367
7	1	VALVE GATE - BRONZE - 1 GATE	40850
8	5	VALVE BALL - BRONZE - 1 BALL	40846
9	11	VALVE BALL - BRONZE - .5 BALL	40837
10	1	VALVE CHECK - BRONZE - 1 CHECK SWNG	40849
11	1	VALVE CHECK - BRONZE - 1 CHECK SPRING	40848
12	1	Y-STRAINER - THR - BRONZE - 1 IN 125# 80MESH	40600
13	1	BILGMON 488 - MONITOR - 15 PPM, 115 VAC	40458
14	1	CONTROL PANEL - THREE PHASE - 304SS ENCLOSURE - *MUST ADD THERMAL OVERLOAD*	60537
15	2	FLANGE - 0.5 IN, RF, 150#, THREADED SA105	40639
16	2	FLANGE - 0.75 IN, RF, 150#, THREADED SA105	40644
17	1	FLANGE - 1.0 IN, RF, 150#, THREADED SA105	40650
18	1	BACKPLATE - CONTROL PANEL, LARGE - A1011 - 39 X 15 X 0.134	50123
19	4	GAUGE - PRESSURE - 4" 100PSI/BAR, 1/4" LM, GLYC	40372
20	1	GAUGE - VACUUM - 4" HG 0-15, 1/4" LM, GLYC	40374
21	8	UNISTRUT END CAPS - GREEN/GREY -	40024
22	1	SOLENOID VALVE - 18N42 - BRONZE - 0.5", 120VAC 50/60	40409
23	1	SOLENOID VALVE - 18A42 - BRONZE - 0.5", 120 VAC 50/60	40391
24	1	SOLENOID VALVE - 18A43 - BRONZE - .75", 120 VAC 50/60	40395
25	1	MOV VALVE BODY - BRONZE - 0.75"	40386
26	1	MOV - NEMA 4 - VALVSYST - 125 IN LBS/115 VAC	40380
27	1	LEVEL SERIES 3E3B PROBE BASE - RED BRASS - 2"	40375
28	1	MOTOR - 1.5 HP 3 PH - 208-230/460V, 415, 56J	40428
29	1	CDU - PUMP KIT - - 70/3	40876
30	1	TUBING KIT - ACETAL GREY	60210
31	1	STRUT - 20 INCH	50413
32	1	STRUT - MYCELX 11, - FRONT	50888
33	1	BRACKET - MOV BRACE	50783
34	1	SKID - ASSEMBLY, 2.5M	50893
35	1	LEVEL PROBE SET - 16" (11/25)..	60192
36	2	MYCELX MX 4 FILTER	SUPPLIED BY MYCELX
37	1	MYCELX BAG FILTER	SUPPLIED BY MYCELX

DIMENSIONS IN [] ARE IN MILLIMETERS

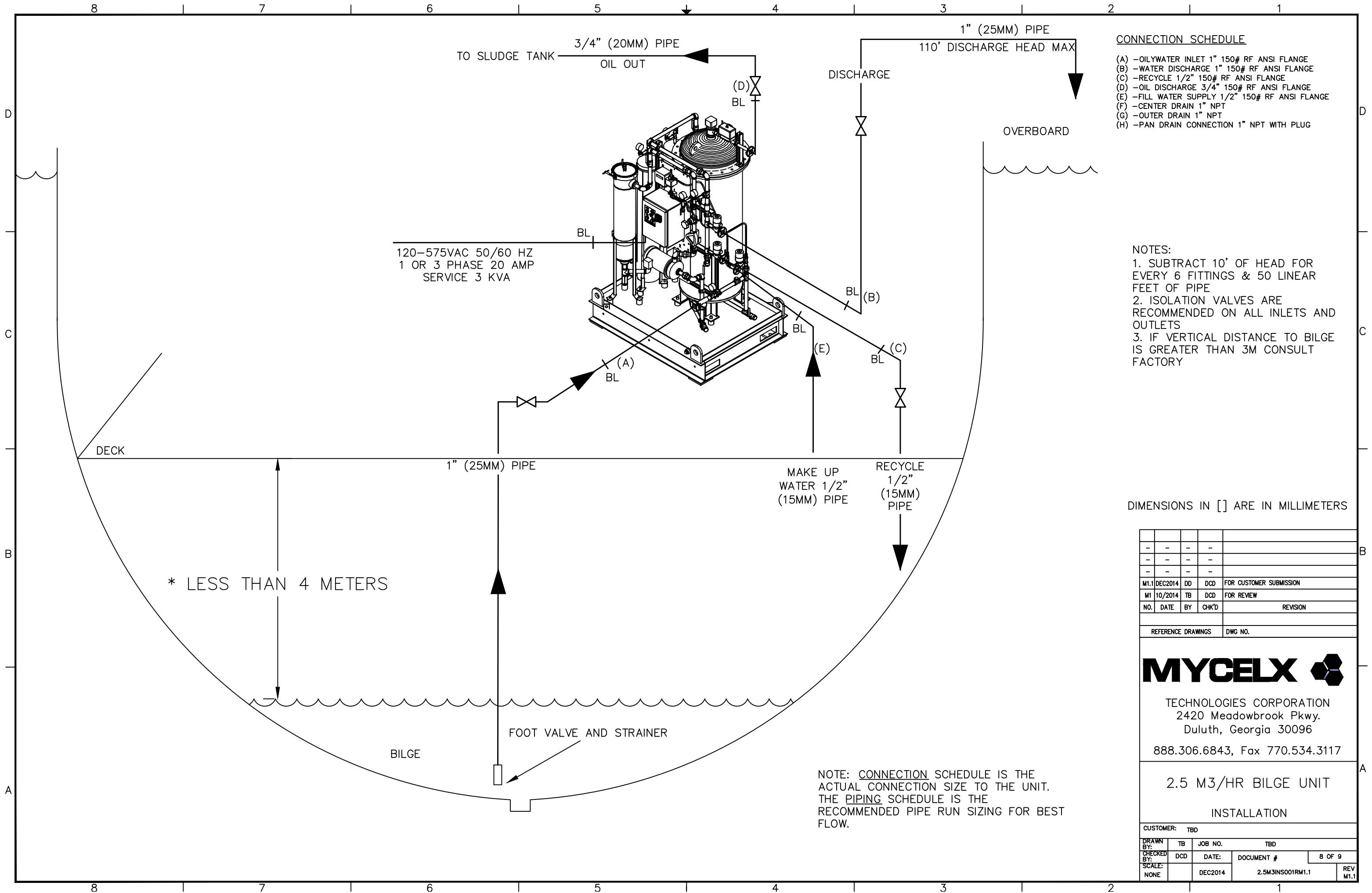
-	-	-	-	
-	-	-	-	
-	-	-	-	
M1.1	DEC2014	DD	DCD	FOR CUSTOMER SUBMISSION
M1	10/2014	TB	DCD	FOR REVIEW
NO.	DATE	BY	CHK'D	REVISION

REFERENCE DRAWINGS	DWG NO.
--------------------	---------

MYCELX 
 TECHNOLOGIES CORPORATION
 2420 Meadowbrook Pkwy.
 Duluth, Georgia 30096
 888.306.6843, Fax 770.534.3117

2.5 M3/HR BILGE UNIT
 FOUNDATION MOUNTING

CUSTOMER: TBD				
DRAWN BY:	TB	JOB NO.	TBD	
CHECKED BY:	DCD	DATE:	DOCUMENT #	6 OF 9
SCALE:	NONE	MAR2015	2.5M3MNT001RM1.1	REV M1.1



CONNECTION SCHEDULE

- (A) - OILY WATER INLET 1" 150# RF ANSI FLANGE
- (B) - WATER DISCHARGE 1" 150# RF ANSI FLANGE
- (C) - RECYCLE 1/2" 150# RF ANSI FLANGE
- (D) - OIL DISCHARGE 3/4" 150# RF ANSI FLANGE
- (E) - FILL WATER SUPPLY 1/2" 150# RF ANSI FLANGE
- (F) - CENTER DRAIN 1" NPT
- (G) - OUTER DRAIN 1" NPT
- (H) - PAN DRAIN CONNECTION 1" NPT WITH PLUG

- NOTES:**
1. SUBTRACT 10' OF HEAD FOR EVERY 6 FITTINGS & 50 LINEAR FEET OF PIPE
 2. ISOLATION VALVES ARE RECOMMENDED ON ALL INLETS AND OUTLETS
 3. IF VERTICAL DISTANCE TO BILGE IS GREATER THAN 3M CONSULT FACTORY

DIMENSIONS IN [] ARE IN MILLIMETERS

M1.1	DEC2014	DD	DCD	FOR CUSTOMER SUBMISSION
M1	10/2014	TB	DCD	FOR REVIEW
NO.	DATE	BY	CHK'D	REVISION



TECHNOLOGIES CORPORATION
 2420 Meadowbrook Pkwy.
 Duluth, Georgia 30096
 888.306.6843, Fax 770.534.3117

**2.5 M3/HR BILGE UNIT
 INSTALLATION**

CUSTOMER: TBD				
DRAWN BY:	TB	JOB NO.	TBD	
CHECKED BY:	DCD	DATE:	DOCUMENT #	8 OF 9
SCALE:	NONE	DEC2014	2.5M3INS001RM1.1	REV M1.1

NOTE: CONNECTION SCHEDULE IS THE ACTUAL CONNECTION SIZE TO THE UNIT. THE PIPING SCHEDULE IS THE RECOMMENDED PIPE RUN SIZING FOR BEST FLOW.

* LESS THAN 4 METERS

CONNECTION SCHEDULE

- (A) - OILY WATER INLET 1" 150# RF ANSI FLANGE
- (B) - WATER DISCHARGE 1" 150# RF ANSI FLANGE
- (C) - RECYCLE 1/2" 150# RF ANSI FLANGE
- (D) - OIL DISCHARGE 3/4" 150# RF ANSI FLANGE
- (E) - FILL WATER SUPPLY 1/2" 150# RF ANSI FLANGE
- (F) - CENTER DRAIN 1" NPT
- (G) - OUTER DRAIN 1" NPT
- (H) - PAN DRAIN CONNECTION 1" NPT WITH PLUG

PIPELINE RECOMMENDATIONS

- 1" OILY WATER SUPPLY LINE
- 1" DISCHARGE LINE
- 1/2" RECYCLE LINE
- 3/4" OIL OUT LINE
- 1/2" FILL WATER IN LINE

UTILITY REQUIREMENTS

POWER: 2.0 KW SERVICE 120-575VAC SINGLE OR
3 PHASE 50-60HZ 4 KVA

MAKEUP WATER: 15PSI, 5GPM CLEAN (NO OIL) FRESH
OR SEA WATER

CELL CLEAN: 1-2 LITERS/DAY POTABLE WATER @5-10PSI

NO AIR REQUIRED:

PAINT SYSTEM

BLAST SSPC SS-10 2.0-3.0 MIL PROFILE
PRIMER COAT SHERWIN WILLIAMS
RECOATABLE EPOXY PRIMER 4-6 MIL DRY
TOP COAT SHERWIN WILLIAMS
HIGH SOLIDS POLYURETHANE 2-3 MILS DRY
RAL 7035 MED SILVER GREY

DRY WEIGHT 1350 lbs 612 kg's
WET WEIGHT 2200 lbs 998 kg's

DIMENSIONS IN [] ARE MILLIMETER

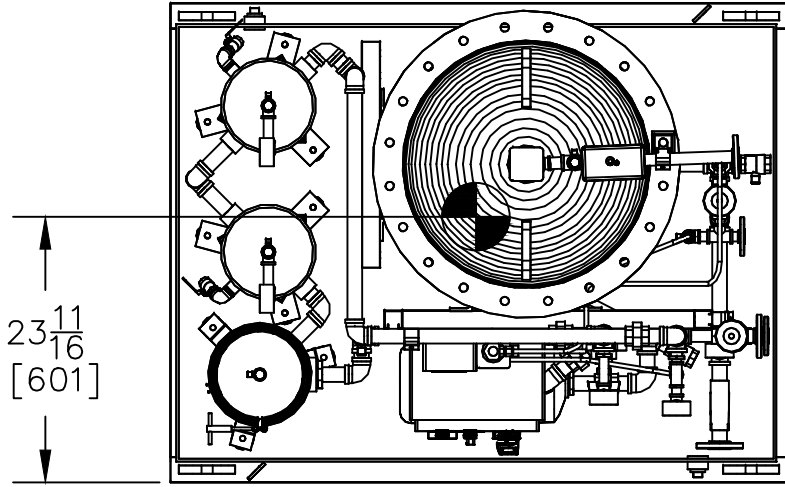
-	-	-	-	
-	-	-	-	
-	-	-	-	
M1.1	DEC2014	DD	DCD	FOR CUSTOMER SUBMISSION
M1	10/2014	TB	DCD	FOR REVIEW
NO.	DATE	BY	CHK'D	REVISION
REFERENCE DRAWINGS				DWG NO.



TECHNOLOGIES CORPORATION
2420 Meadowbrook Pkwy.
Duluth, Georgia 30096
888.306.6843, Fax 770.534.3117

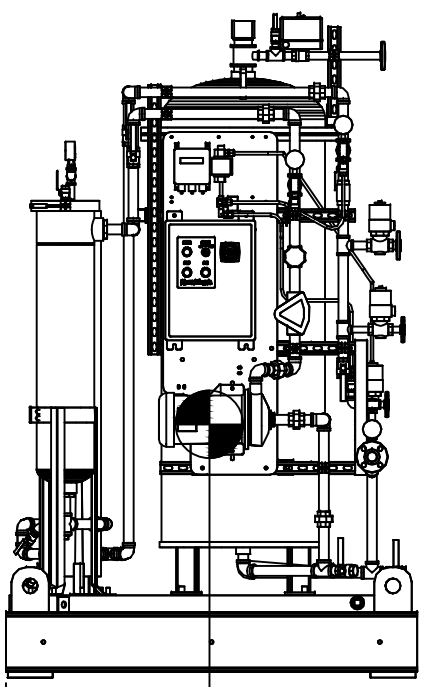
2.5 M3/HR BILGE UNIT
CENTER OF GRAVITY

CUSTOMER: TBD				
DRAWN BY:	TB	JOB NO.	TBD	
CHECKED BY:	DCD	DATE:	DOCUMENT #	9 OF 9
SCALE:	NONE	DEC2014	2.5M3COG001RM1.1	REV M1.1



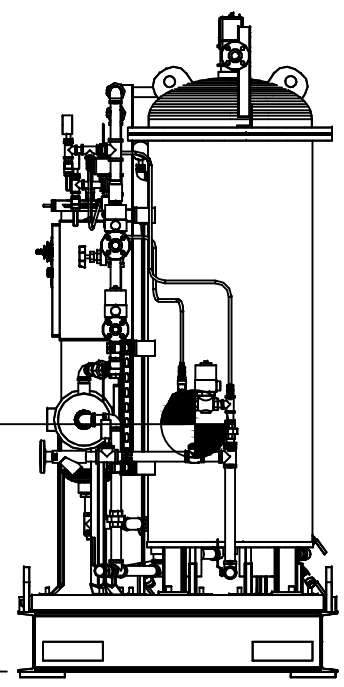
COG Y

23 ¹¹/₁₆
[601]



COG X

27 ¹/₄
[692]



COG Z

33 ¹/₁₆
[840]

8 7 6 5 4 3 2 1

8 7 6 5 4 3 2 1

