

| | | | | |
|------|---------|----|-------|----------------|
| - | - | - | - | |
| - | - | - | - | |
| - | - | - | - | |
| - | - | - | - | |
| M1.0 | DEC2014 | TB | DCD | FOR SUBMISSION |
| NO. | DATE | BY | CHK'D | REVISION |

| | |
|--------------------|---------|
| REFERENCE DRAWINGS | DWG NO. |
|--------------------|---------|

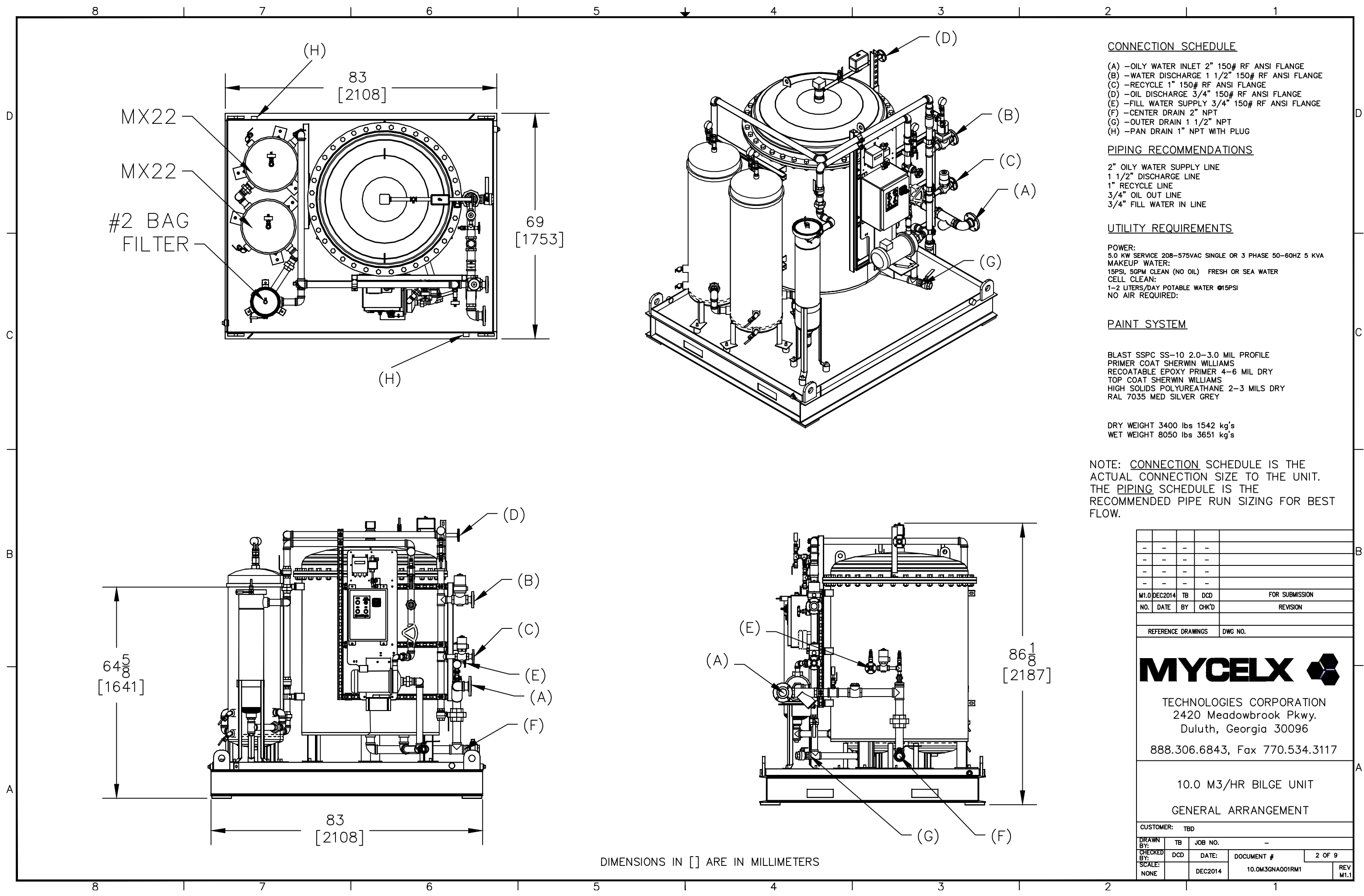


TECHNOLOGIES CORPORATION
 2420 Meadowbrook Pkwy.
 Duluth, Georgia 30096
 888.306.6843, Fax 770.534.3117

10.0 M3/HR BILGE UNIT

LABELED VIEW

| | | | | |
|---------------|------|---------|-----------------|----------|
| CUSTOMER: TBD | | | | |
| DRAWN BY: | TB | JOB NO. | - | |
| CHECKED BY: | DCD | DATE: | DOCUMENT # | 1 OF 9 |
| SCALE: | NONE | DEC2014 | 10.0M3LBV001RM1 | REV M1.0 |



CONNECTION SCHEDULE

- (A) - OILY WATER INLET 2" 150# RF ANSI FLANGE
- (B) - WATER DISCHARGE 1 1/2" 150# RF ANSI FLANGE
- (C) - RECYCLE 1" 150# RF ANSI FLANGE
- (D) - OIL DISCHARGE 3/4" 150# RF ANSI FLANGE
- (E) - FILL WATER SUPPLY 3/4" 150# RF ANSI FLANGE
- (F) - CENTER DRAIN 2" NPT
- (G) - OUTER DRAIN 1 1/2" NPT
- (H) - PAN DRAIN 1" NPT WITH PLUG

PIPING RECOMMENDATIONS

- 2" OILY WATER SUPPLY LINE
- 1 1/2" DISCHARGE LINE
- 1" RECYCLE LINE
- 3/4" OIL OUT LINE
- 3/4" FILL WATER IN LINE

UTILITY REQUIREMENTS

- POWER:
5.0 KW SERVICE 208-575VAC SINGLE OR 3 PHASE 50-60HZ 5 KVA
- MAKEUP WATER:
15PSI, 5GPM CLEAN (NO OIL) FRESH OR SEA WATER
- CELL CLEAN:
1-2 LITERS/DAY POTABLE WATER @15PSI
NO AIR REQUIRED:

PAINT SYSTEM

- BLAST SSPC SS-10 2.0-3.0 MIL PROFILE
- PRIMER COAT SHERWIN WILLIAMS
- RECOATABLE EPOXY PRIMER 4-6 MIL DRY
- TOP COAT SHERWIN WILLIAMS
- HIGH SOLIDS POLYURETHANE 2-3 MILS DRY
- RAL 7035 MED SILVER GREY

DRY WEIGHT 3400 lbs 1542 kg's
WET WEIGHT 8050 lbs 3651 kg's

NOTE: CONNECTION SCHEDULE IS THE ACTUAL CONNECTION SIZE TO THE UNIT. THE PIPING SCHEDULE IS THE RECOMMENDED PIPE RUN SIZING FOR BEST FLOW.

| | | | | |
|------|---------|----|-------|----------------|
| | | | | |
| | | | | |
| | | | | |
| | | | | |
| M1.0 | DEC2014 | TB | DCD | FOR SUBMISSION |
| NO. | DATE | BY | CHK'D | REVISION |

| | |
|--------------------|---------|
| REFERENCE DRAWINGS | DWG NO. |
|--------------------|---------|

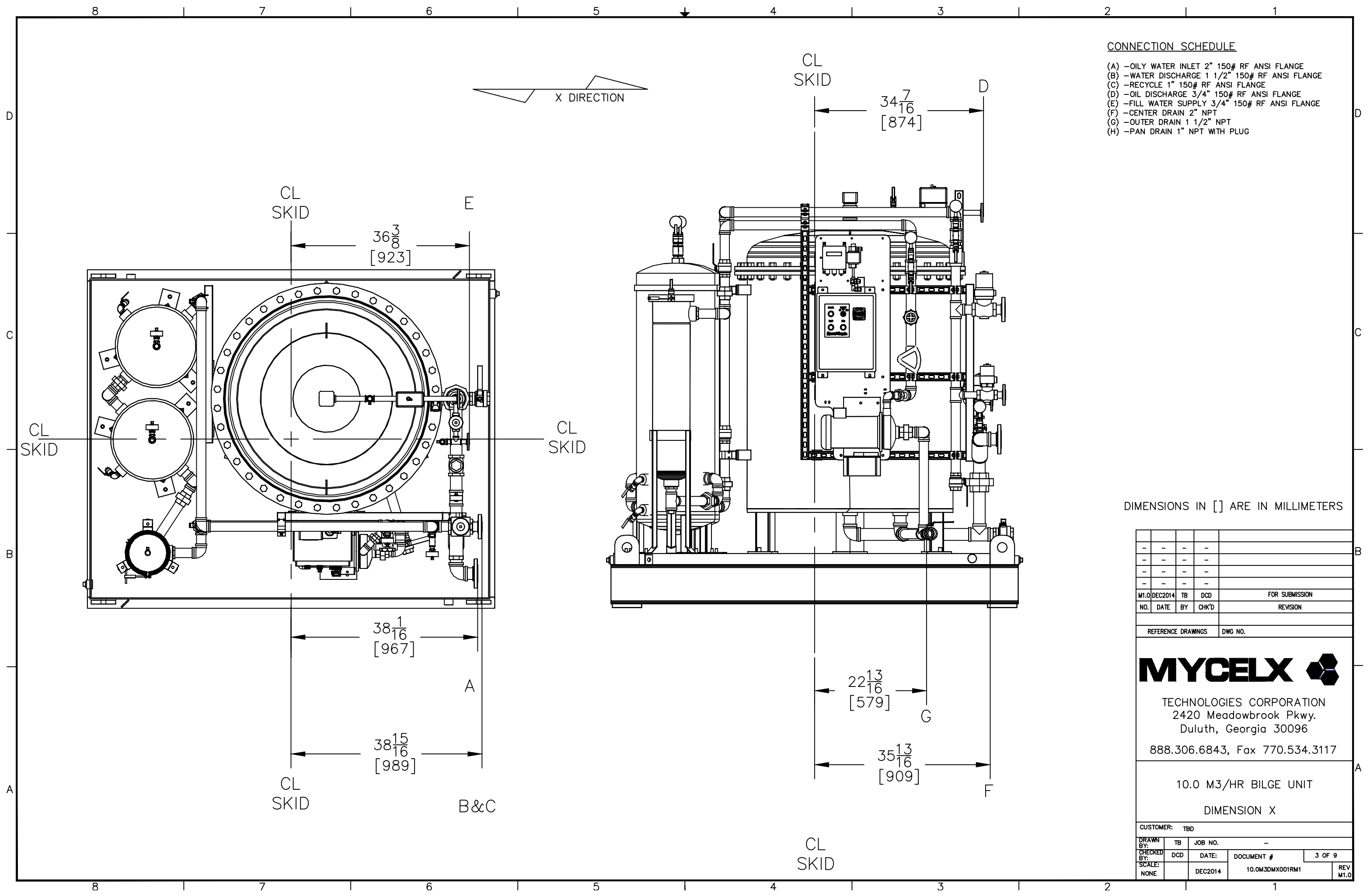
MYCELX 

TECHNOLOGIES CORPORATION
2420 Meadowbrook Pkwy.
Duluth, Georgia 30096
888.306.6843, Fax 770.534.3117

10.0 M3/HR BILGE UNIT
GENERAL ARRANGEMENT

| | | | | |
|---------------|------|---------|-----------------|----------|
| CUSTOMER: TBD | | | | |
| DRAWN BY: | TB | JOB NO. | - | |
| CHECKED BY: | DCD | DATE: | DOCUMENT # | 2 OF 9 |
| SCALE: | NONE | DEC2014 | 10.0M3GNA001RM1 | REV M1.1 |

DIMENSIONS IN [] ARE IN MILLIMETERS



CONNECTION SCHEDULE

- (A) - OILY WATER INLET 2" 150# RF ANSI FLANGE
- (B) - WATER DISCHARGE 1 1/2" 150# RF ANSI FLANGE
- (C) - RECYCLE 1" 150# RF ANSI FLANGE
- (D) - OIL DISCHARGE 3/4" 150# RF ANSI FLANGE
- (E) - FILL WATER SUPPLY 3/4" 150# RF ANSI FLANGE
- (F) - CENTER DRAIN 2" NPT
- (G) - OUTER DRAIN 1 1/2" NPT
- (H) - PAN DRAIN 1" NPT WITH PLUG

DIMENSIONS IN [] ARE IN MILLIMETERS

| | | | | |
|------|---------|----|-------|----------------|
| - | - | - | - | |
| - | - | - | - | |
| - | - | - | - | |
| - | - | - | - | |
| M1.0 | DEC2014 | TB | DCD | FOR SUBMISSION |
| NO. | DATE | BY | CHK'D | REVISION |

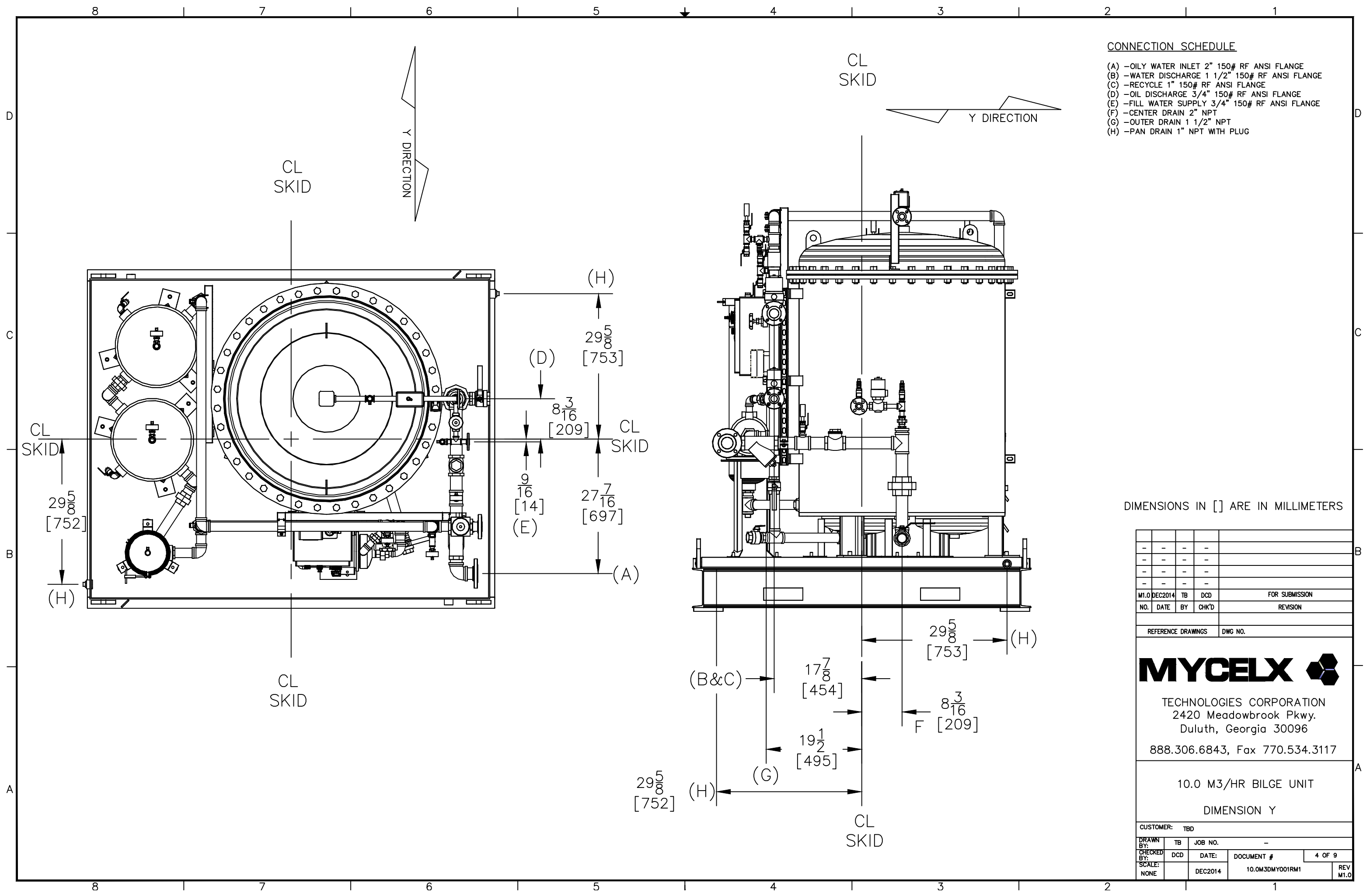
| | |
|--------------------|---------|
| REFERENCE DRAWINGS | DWG NO. |
|--------------------|---------|

MYCELX 

TECHNOLOGIES CORPORATION
 2420 Meadowbrook Pkwy.
 Duluth, Georgia 30096
 888.306.6843, Fax 770.534.3117

10.0 M3/HR BILGE UNIT
 DIMENSION X

| | | | | |
|---------------|------|---------|----------------|----------|
| CUSTOMER: TBD | | | | |
| DRAWN BY: | TB | JOB NO. | - | |
| CHECKED BY: | DCD | DATE: | DOCUMENT # | 3 OF 9 |
| SCALE: | NONE | DEC2014 | 10.0M3MX001RM1 | REV M1.0 |



CONNECTION SCHEDULE

- (A) - OILY WATER INLET 2" 150# RF ANSI FLANGE
- (B) - WATER DISCHARGE 1 1/2" 150# RF ANSI FLANGE
- (C) - RECYCLE 1" 150# RF ANSI FLANGE
- (D) - OIL DISCHARGE 3/4" 150# RF ANSI FLANGE
- (E) - FILL WATER SUPPLY 3/4" 150# RF ANSI FLANGE
- (F) - CENTER DRAIN 2" NPT
- (G) - OUTER DRAIN 1 1/2" NPT
- (H) - PAN DRAIN 1" NPT WITH PLUG

DIMENSIONS IN [] ARE IN MILLIMETERS

| | | | | |
|--------------------|---------|----|-------|----------------|
| - | - | - | - | |
| - | - | - | - | |
| - | - | - | - | |
| M1.0 | DEC2014 | TB | DCD | FOR SUBMISSION |
| NO. | DATE | BY | CHK'D | REVISION |
| | | | | |
| REFERENCE DRAWINGS | | | | DWG NO. |



TECHNOLOGIES CORPORATION
 2420 Meadowbrook Pkwy.
 Duluth, Georgia 30096
 888.306.6843, Fax 770.534.3117

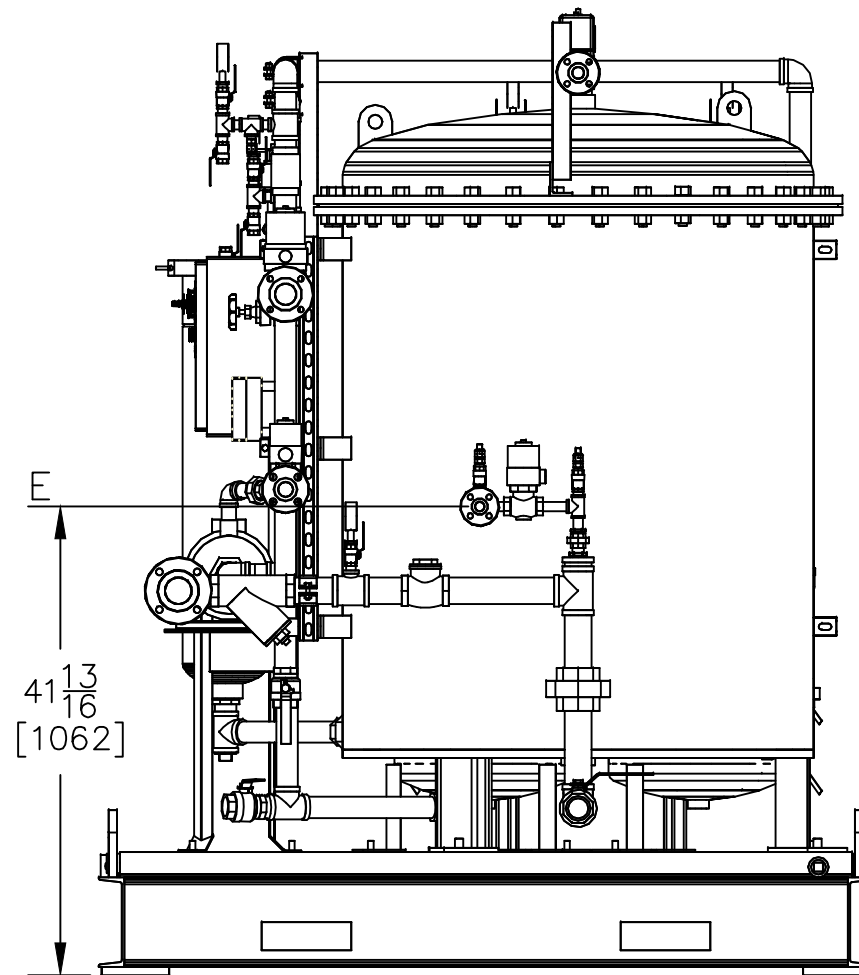
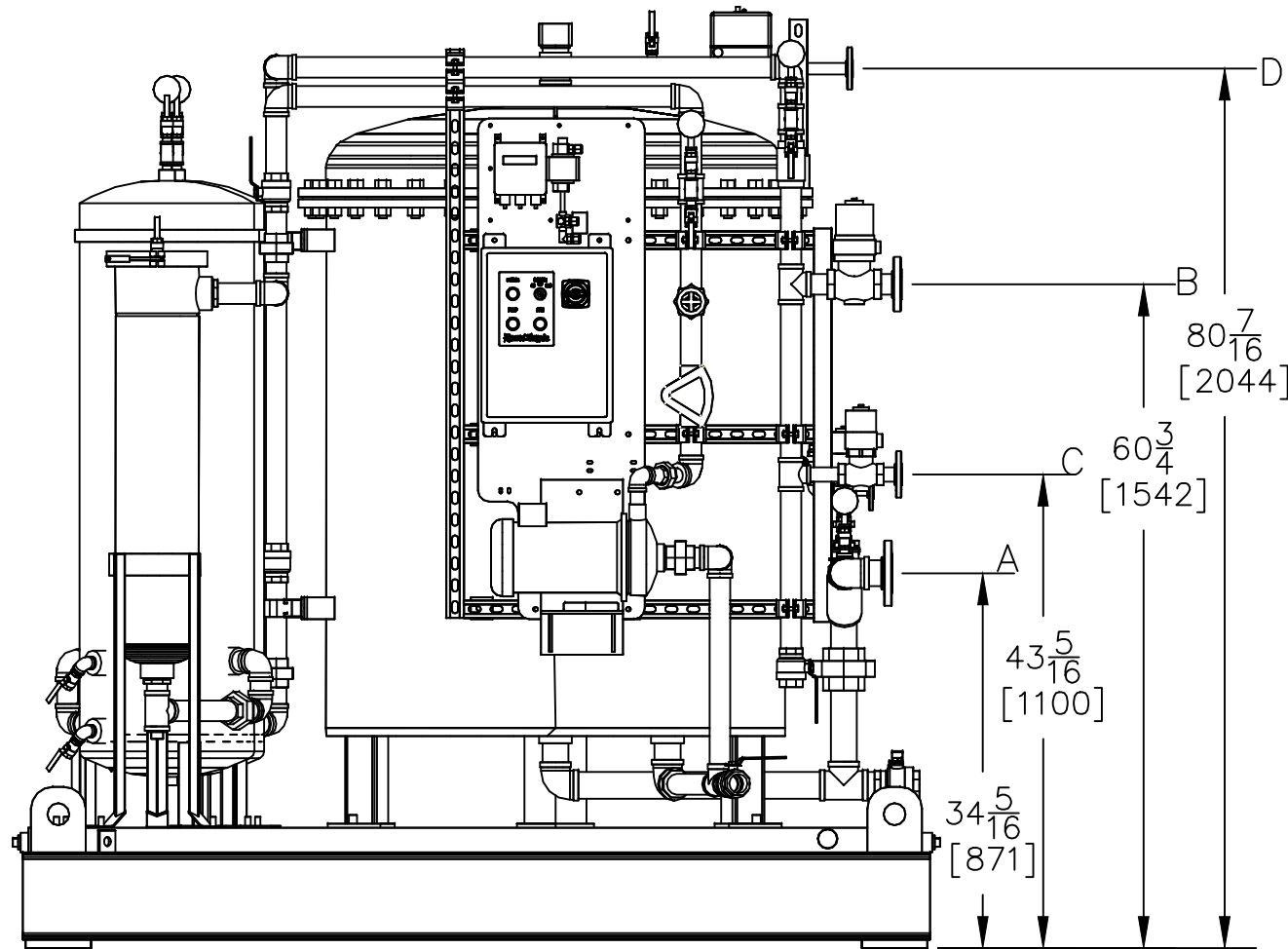
10.0 M3/HR BILGE UNIT
 DIMENSION Y

| | | | | |
|---------------|------|---------|----------------|----------|
| CUSTOMER: TBD | | | | |
| DRAWN BY: | TB | JOB NO. | - | |
| CHECKED BY: | DCD | DATE: | DOCUMENT # | 4 OF 9 |
| SCALE: | NONE | DEC2014 | 10.0M3MY001RM1 | REV M1.0 |

CONNECTION SCHEDULE

- (A) - OILY WATER INLET 2" 150# RF ANSI FLANGE
- (B) - WATER DISCHARGE 1 1/2" 150# RF ANSI FLANGE
- (C) - RECYCLE 1" 150# RF ANSI FLANGE
- (D) - OIL DISCHARGE 3/4" 150# RF ANSI FLANGE
- (E) - FILL WATER SUPPLY 3/4" 150# RF ANSI FLANGE
- (F) - CENTER DRAIN 2" NPT
- (G) - OUTER DRAIN 1 1/2" NPT
- (H) - PAN DRAIN 1" NPT WITH PLUG

Z DIRECTION



DIMENSIONS IN [] ARE IN MILLIMETERS

| | | | | |
|------|---------|----|-------|----------------|
| - | - | - | - | |
| - | - | - | - | |
| - | - | - | - | |
| M1.0 | DEC2014 | TB | DCD | FOR SUBMISSION |
| NO. | DATE | BY | CHK'D | REVISION |

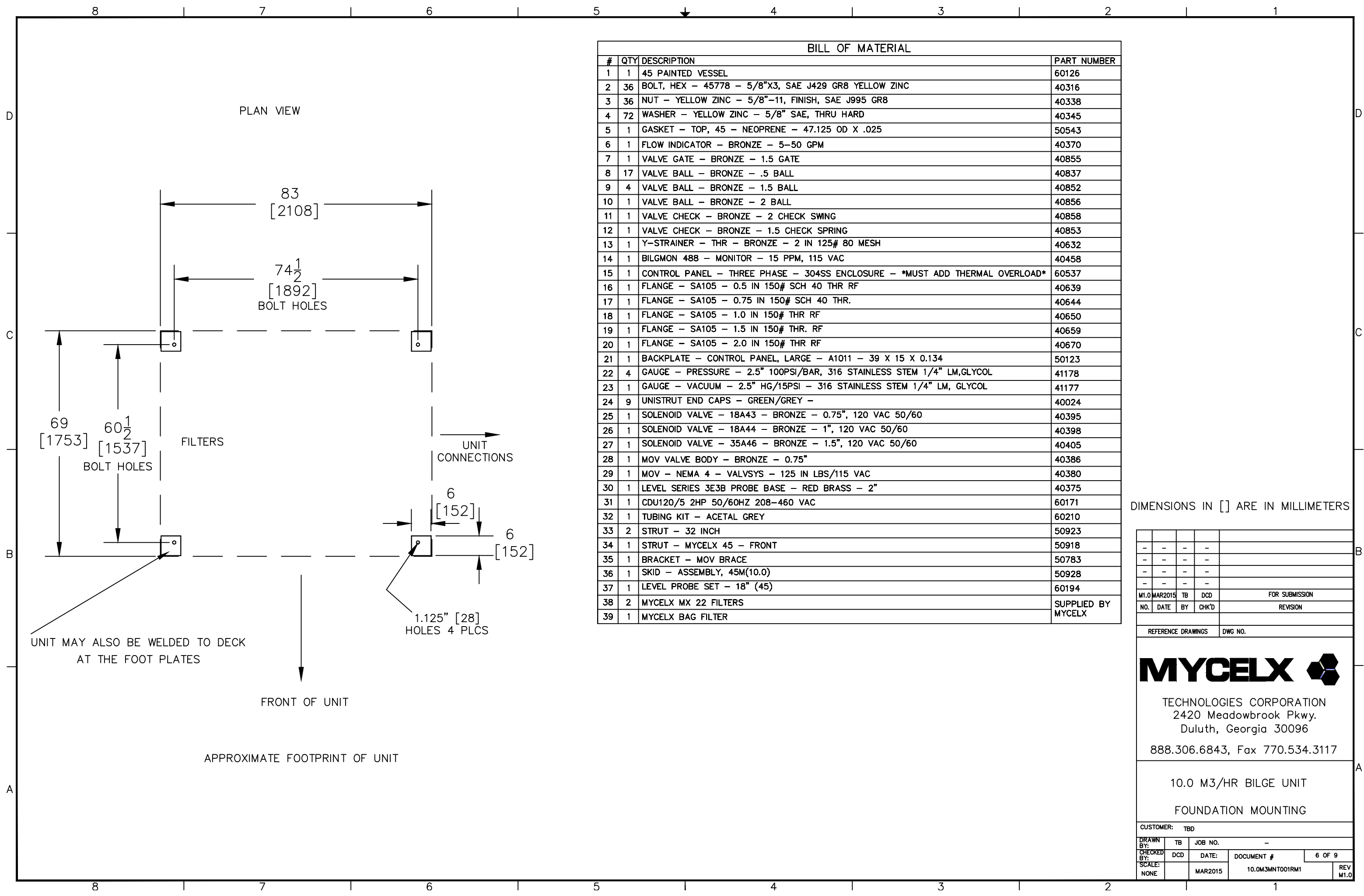
| | |
|--------------------|---------|
| REFERENCE DRAWINGS | DWG NO. |
|--------------------|---------|



TECHNOLOGIES CORPORATION
 2420 Meadowbrook Pkwy.
 Duluth, Georgia 30096
 888.306.6843, Fax 770.534.3117

10.0 M3/HR BILGE UNIT
 DIMENSION Z

| | | | | |
|---------------|------|---------|-----------------|----------|
| CUSTOMER: TBD | | | | |
| DRAWN BY: | TB | JOB NO. | - | |
| CHECKED BY: | DCD | DATE: | DOCUMENT # | 5 OF 9 |
| SCALE: | NONE | DEC2014 | 10.0M3DMZ001RM1 | REV M1.0 |



| BILL OF MATERIAL | | | |
|------------------|-----|---|--------------------|
| # | QTY | DESCRIPTION | PART NUMBER |
| 1 | 1 | 45 PAINTED VESSEL | 60126 |
| 2 | 36 | BOLT, HEX - 45778 - 5/8"x3, SAE J429 GR8 YELLOW ZINC | 40316 |
| 3 | 36 | NUT - YELLOW ZINC - 5/8"-11, FINISH, SAE J995 GR8 | 40338 |
| 4 | 72 | WASHER - YELLOW ZINC - 5/8" SAE, THRU HARD | 40345 |
| 5 | 1 | GASKET - TOP, 45 - NEOPRENE - 47.125 OD X .025 | 50543 |
| 6 | 1 | FLOW INDICATOR - BRONZE - 5-50 GPM | 40370 |
| 7 | 1 | VALVE GATE - BRONZE - 1.5 GATE | 40855 |
| 8 | 17 | VALVE BALL - BRONZE - .5 BALL | 40837 |
| 9 | 4 | VALVE BALL - BRONZE - 1.5 BALL | 40852 |
| 10 | 1 | VALVE BALL - BRONZE - 2 BALL | 40856 |
| 11 | 1 | VALVE CHECK - BRONZE - 2 CHECK SWING | 40858 |
| 12 | 1 | VALVE CHECK - BRONZE - 1.5 CHECK SPRING | 40853 |
| 13 | 1 | Y-STRAINER - THR - BRONZE - 2 IN 125# 80 MESH | 40632 |
| 14 | 1 | BILGMON 488 - MONITOR - 15 PPM, 115 VAC | 40458 |
| 15 | 1 | CONTROL PANEL - THREE PHASE - 304SS ENCLOSURE - *MUST ADD THERMAL OVERLOAD* | 60537 |
| 16 | 1 | FLANGE - SA105 - 0.5 IN 150# SCH 40 THR RF | 40639 |
| 17 | 1 | FLANGE - SA105 - 0.75 IN 150# SCH 40 THR. | 40644 |
| 18 | 1 | FLANGE - SA105 - 1.0 IN 150# THR RF | 40650 |
| 19 | 1 | FLANGE - SA105 - 1.5 IN 150# THR. RF | 40659 |
| 20 | 1 | FLANGE - SA105 - 2.0 IN 150# THR RF | 40670 |
| 21 | 1 | BACKPLATE - CONTROL PANEL, LARGE - A1011 - 39 X 15 X 0.134 | 50123 |
| 22 | 4 | GAUGE - PRESSURE - 2.5" 100PSI/BAR, 316 STAINLESS STEM 1/4" LM, GLYCOL | 41178 |
| 23 | 1 | GAUGE - VACUUM - 2.5" HG/15PSI - 316 STAINLESS STEM 1/4" LM, GLYCOL | 41177 |
| 24 | 9 | UNISTRUT END CAPS - GREEN/GREY - | 40024 |
| 25 | 1 | SOLENOID VALVE - 18A43 - BRONZE - 0.75", 120 VAC 50/60 | 40395 |
| 26 | 1 | SOLENOID VALVE - 18A44 - BRONZE - 1", 120 VAC 50/60 | 40398 |
| 27 | 1 | SOLENOID VALVE - 35A46 - BRONZE - 1.5", 120 VAC 50/60 | 40405 |
| 28 | 1 | MOV VALVE BODY - BRONZE - 0.75" | 40386 |
| 29 | 1 | MOV - NEMA 4 - VALVSY - 125 IN LBS/115 VAC | 40380 |
| 30 | 1 | LEVEL SERIES 3E3B PROBE BASE - RED BRASS - 2" | 40375 |
| 31 | 1 | CDU120/5 2HP 50/60HZ 208-460 VAC | 60171 |
| 32 | 1 | TUBING KIT - ACETAL GREY | 60210 |
| 33 | 2 | STRUT - 32 INCH | 50923 |
| 34 | 1 | STRUT - MYCELX 45 - FRONT | 50918 |
| 35 | 1 | BRACKET - MOV BRACE | 50783 |
| 36 | 1 | SKID - ASSEMBLY, 45M(10.0) | 50928 |
| 37 | 1 | LEVEL PROBE SET - 18" (45) | 60194 |
| 38 | 2 | MYCELX MX 22 FILTERS | SUPPLIED BY MYCELX |
| 39 | 1 | MYCELX BAG FILTER | SUPPLIED BY MYCELX |

DIMENSIONS IN [] ARE IN MILLIMETERS

| | | | | |
|------|---------|----|-------|----------------|
| - | - | - | - | - |
| - | - | - | - | - |
| - | - | - | - | - |
| - | - | - | - | - |
| M1.0 | MAR2015 | TB | DCD | FOR SUBMISSION |
| NO. | DATE | BY | CHK'D | REVISION |

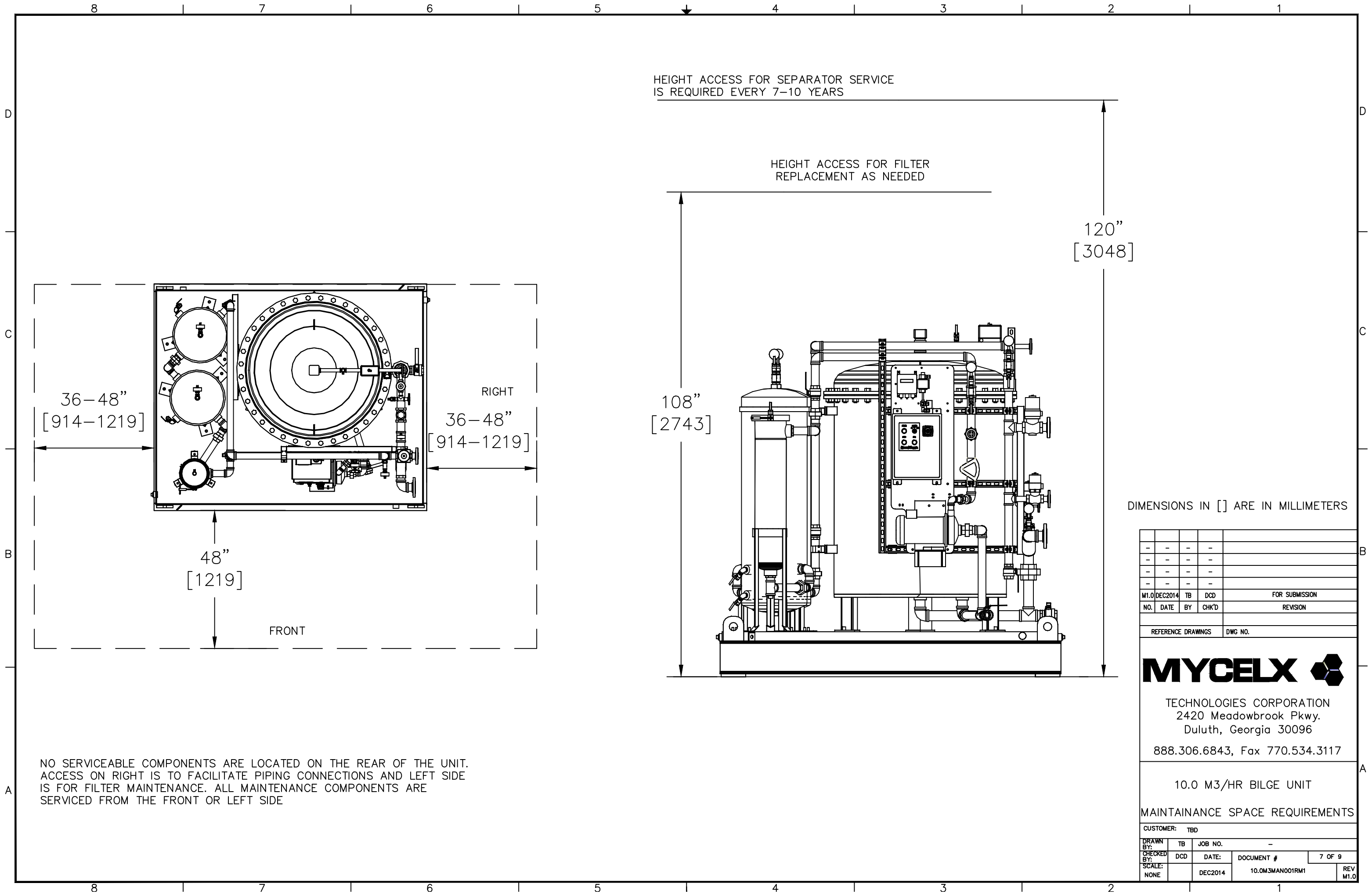
| | |
|--------------------|---------|
| REFERENCE DRAWINGS | DWG NO. |
|--------------------|---------|

MYCELX 


TECHNOLOGIES CORPORATION
 2420 Meadowbrook Pkwy.
 Duluth, Georgia 30096
 888.306.6843, Fax 770.534.3117

10.0 M3/HR BILGE UNIT
 FOUNDATION MOUNTING

| | | | | |
|---------------|------|---------|-----------------|----------|
| CUSTOMER: TBD | | | | |
| DRAWN BY: | TB | JOB NO. | - | |
| CHECKED BY: | DCD | DATE: | DOCUMENT # | 6 OF 9 |
| SCALE: | NONE | MAR2015 | 10.0M3MNT001RM1 | REV M1.0 |



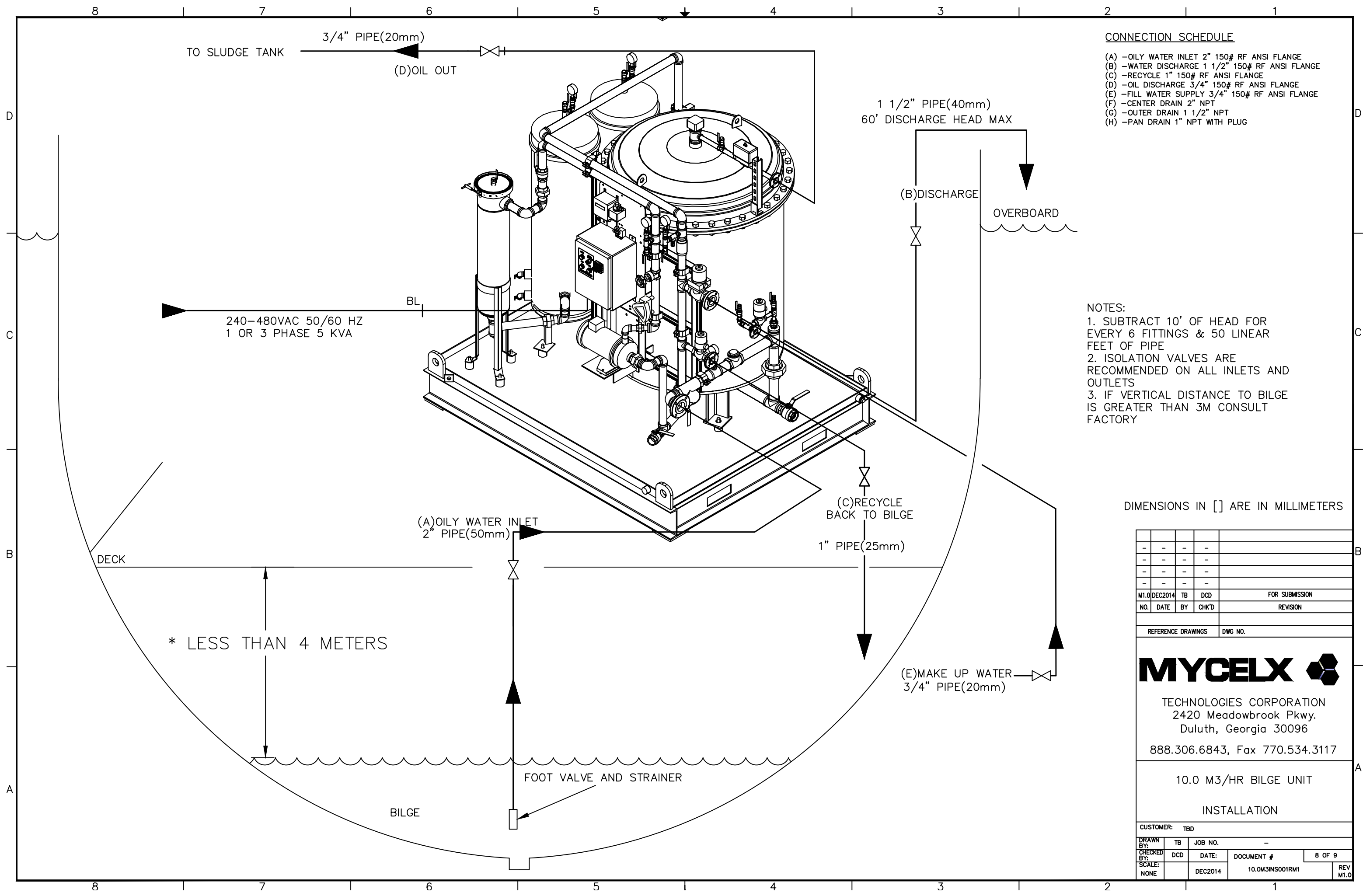
| | | | | |
|--------------------|---------|----|-------|----------------|
| - | - | - | - | |
| - | - | - | - | |
| - | - | - | - | |
| - | - | - | - | |
| M1.0 | DEC2014 | TB | DCD | FOR SUBMISSION |
| NO. | DATE | BY | CHK'D | REVISION |
| | | | | |
| | | | | |
| REFERENCE DRAWINGS | DWG NO. | | | |

MYCELX 

TECHNOLOGIES CORPORATION
 2420 Meadowbrook Pkwy.
 Duluth, Georgia 30096
 888.306.6843, Fax 770.534.3117

10.0 M3/HR BILGE UNIT

MAINTAINANCE SPACE REQUIREMENTS



CONNECTION SCHEDULE

- (A) - OILY WATER INLET 2" 150# RF ANSI FLANGE
- (B) - WATER DISCHARGE 1 1/2" 150# RF ANSI FLANGE
- (C) - RECYCLE 1" 150# RF ANSI FLANGE
- (D) - OIL DISCHARGE 3/4" 150# RF ANSI FLANGE
- (E) - FILL WATER SUPPLY 3/4" 150# RF ANSI FLANGE
- (F) - CENTER DRAIN 2" NPT
- (G) - OUTER DRAIN 1 1/2" NPT
- (H) - PAN DRAIN 1" NPT WITH PLUG

- NOTES:**
1. SUBTRACT 10' OF HEAD FOR EVERY 6 FITTINGS & 50 LINEAR FEET OF PIPE
 2. ISOLATION VALVES ARE RECOMMENDED ON ALL INLETS AND OUTLETS
 3. IF VERTICAL DISTANCE TO BILGE IS GREATER THAN 3M CONSULT FACTORY

DIMENSIONS IN [] ARE IN MILLIMETERS

| | | | | |
|------|---------|----|-------|----------------|
| | | | | |
| | | | | |
| | | | | |
| | | | | |
| M1.0 | DEC2014 | TB | DCD | FOR SUBMISSION |
| NO. | DATE | BY | CHK'D | REVISION |
| | | | | |
| | | | | |
| | | | | |

MYCELX 

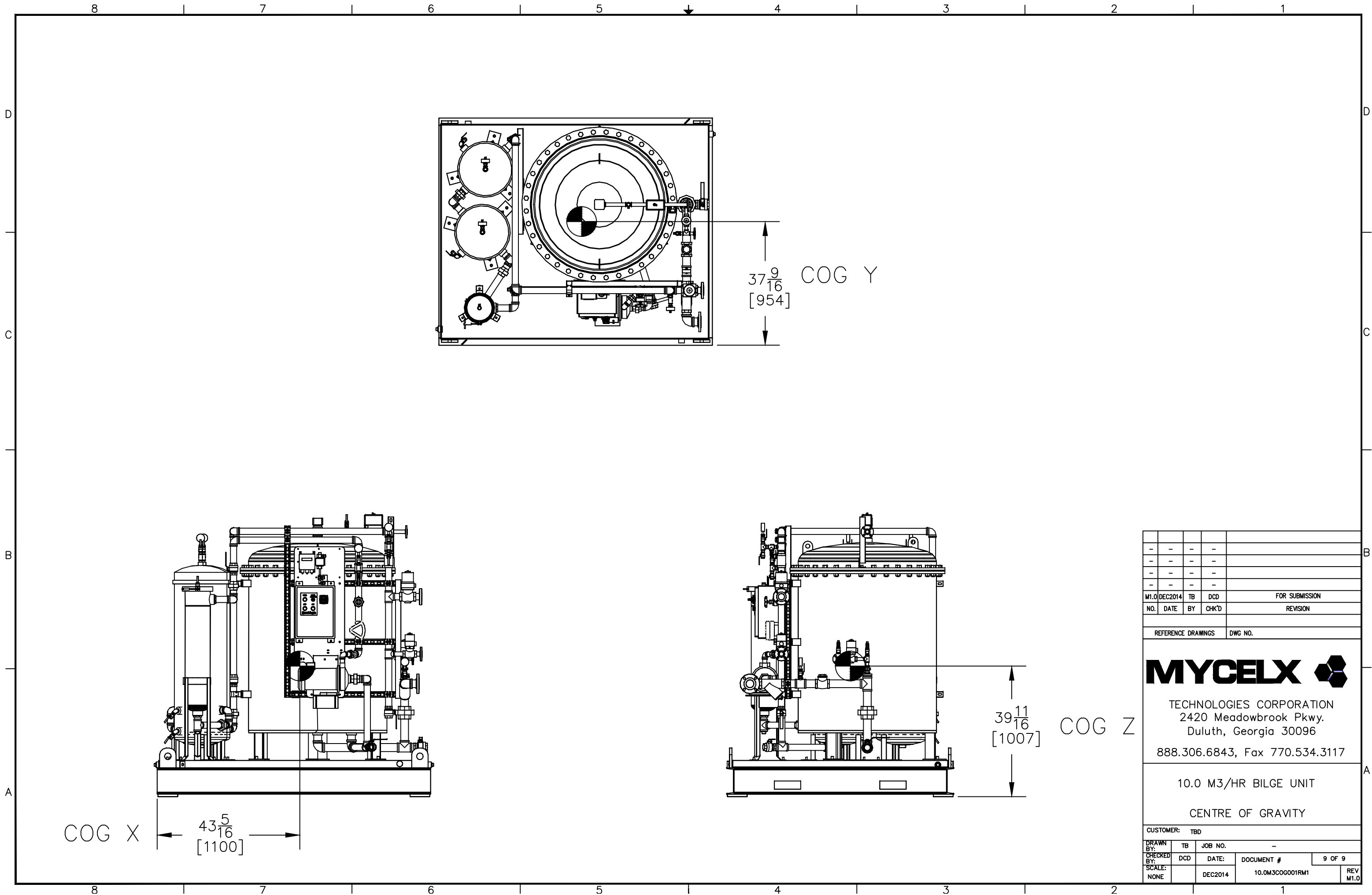
TECHNOLOGIES CORPORATION
 2420 Meadowbrook Pkwy.
 Duluth, Georgia 30096
 888.306.6843, Fax 770.534.3117

10.0 M3/HR BILGE UNIT

INSTALLATION

CUSTOMER: TBD

| | | | |
|-------------|------|------------|-----------------|
| DRAWN BY: | TB | JOB NO. | - |
| CHECKED BY: | DCD | DATE: | |
| SCALE: | NONE | DEC2014 | |
| | | DOCUMENT # | 10.0M3INS001RM1 |
| | | | 8 OF 9 |
| | | | REV M1.0 |



| | | | | |
|------|---------|----|-------|----------------|
| - | - | - | - | |
| - | - | - | - | |
| - | - | - | - | |
| M1.0 | DEC2014 | TB | DCD | FOR SUBMISSION |
| NO. | DATE | BY | CHK'D | REVISION |

| | |
|--------------------|---------|
| REFERENCE DRAWINGS | DWG NO. |
|--------------------|---------|

MYCELX 

TECHNOLOGIES CORPORATION
 2420 Meadowbrook Pkwy.
 Duluth, Georgia 30096
 888.306.6843, Fax 770.534.3117

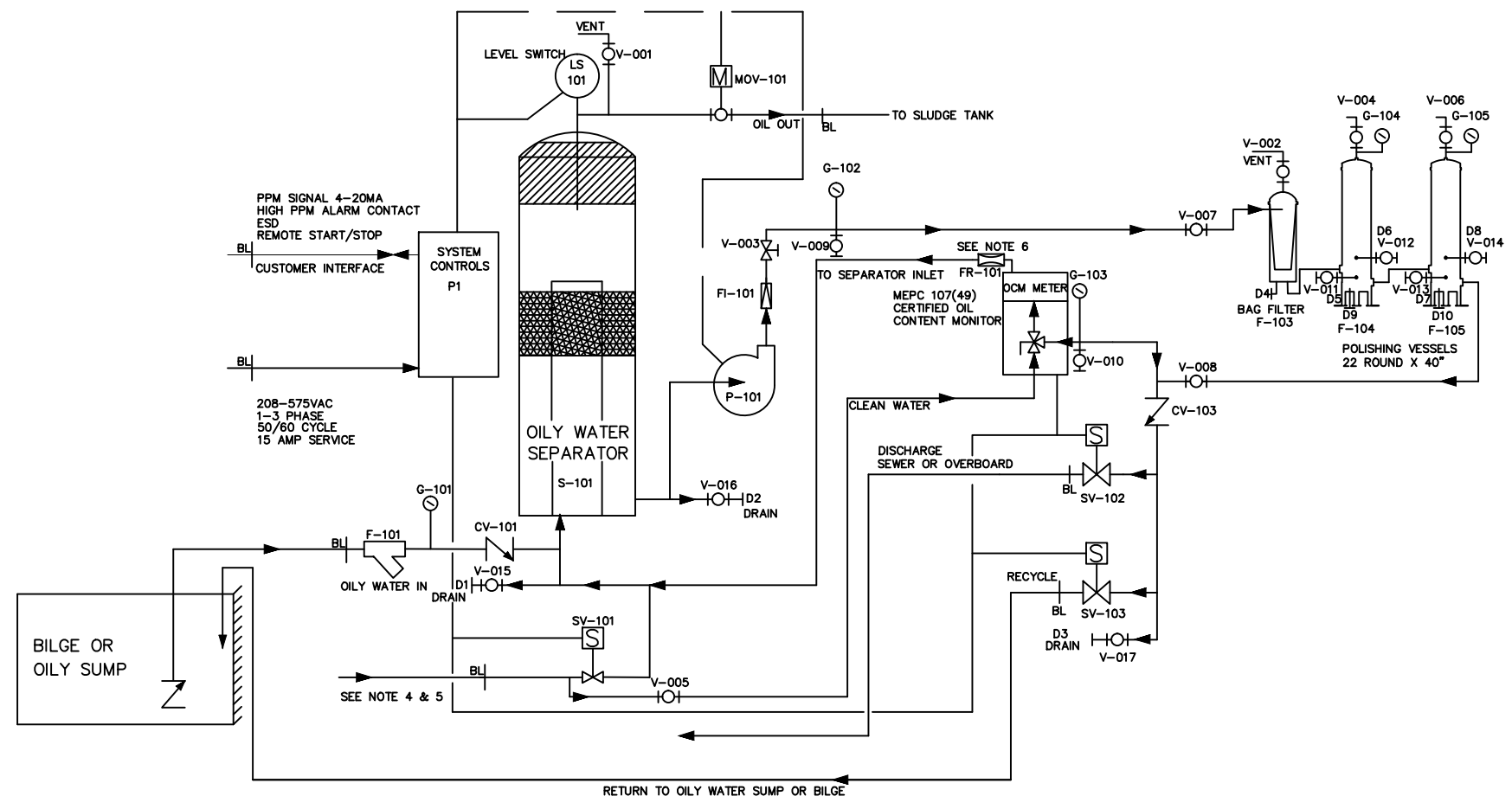
10.0 M3/HR BILGE UNIT
 CENTRE OF GRAVITY

| | | | | |
|---------------|------|---------|-----------------|----------|
| CUSTOMER: TBD | | | | |
| DRAWN BY: | TB | JOB NO. | - | |
| CHECKED BY: | DCD | DATE: | DOCUMENT # | 9 OF 9 |
| SCALE: | NONE | DEC2014 | 10.0M3COG001RM1 | REV M1.0 |

| VALVE & COMPONENT SCHEDULE | | | | |
|----------------------------|----------------------|-----------|-----|---------------------------|
| MARK | DESCRIPTION | 10M3/HR | MAT | USE |
| CV-101 | CHECK VALVE | 2" | MB | INLET CHECK VALVE |
| CV-103 | CHECK VALVE | 1 1/2" | MB | DISCHARGE CHECK |
| D4 | NPT PLUG | 1" | MB | BAG FILTER DRAIN |
| D9 | NPT PLUG | 1/2" | MB | POLISHER DRAIN |
| D10 | NPT PLUG | 1/2" | MB | POLISHER DRAIN |
| F-101 | Y STRAINER | 2" | MB | INLET FILTER |
| F-103 | BAG FILTER | N/A | SS | PRE-FILTER |
| F-104 | CARTRIDGE FILTER | N/A | SS | POST-FILTER |
| F-105 | CARTRIDGE FILTER | N/A | SS | POST-FILTER |
| FI-101 | FLOW INDICATOR | 1 1/2" | MB | VISUAL FLOW INDICATION |
| FR-101 | OCM FLOW RESTRICTOR | N/A | PP | FLOW REDUCTION |
| G-101 | VACUUM GAUGE | 1/4" | SS | INLET SUCTION VACUUM |
| G-102 | PRESSURE GAUGE | 1/4" | SS | PUMP DISCHARGE |
| G-103 | PRESSURE GAUGE | 1/4" | SS | POST POLISHER PRESSURE |
| G-104 | PRESSURE GAUGE | 1/4" | SS | F-104 POLISHER PRESSURE |
| G-105 | PRESSURE GAUGE | 1/4" | SS | F-105 POLISHER PRESSURE |
| LS-101 | OIL LEVEL SWITCH | 2" | MB | LEVEL OF OIL |
| MOV-101 | MOTOR OPERATED VALVE | 3/4" | MB | OIL OUT VALVE |
| P1 | MAIN CONTROL PANEL | N/A | SS | CONTROLS |
| P-101 | MAIN PROCESS PUMP | 1 1/2"x1" | SS | PUMP |
| S-101 | OIL SEPARATOR | N/A | CS | OIL SEPARATION |
| SV-101 | SOLENOID VALVE | 3/4" | MB | MAKE-UP WATER INLET |
| SV-102 | SOLENOID VALVE | 1 1/2" | MB | DISCHARGE WATER |
| SV-103 | SOLENOID VALVE | 1" | MB | RECYCLE WATER |
| V-001 | BALL VALVE | 3/4" | MB | SEPARATOR VENT |
| V-002 | BALL VALVE | 1/2" | MB | F-103 VENT VALVE |
| V-003 | GATE VALVE | 1 1/2" | MB | FLOW CONTROL VALVE |
| V-004 | BALL VALVE | 1/2" | MB | F-104 VENT VALVE |
| V-005 | BALL VALVE | 1/2" | MB | OCM CLEAN WATER |
| V-006 | BALL VALVE | 1/2" | MB | F-105 VENT VALVE |
| V-007 | BALL VALVE | 1 1/2" | MB | FILTERS INLET ISOLATION |
| V-008 | BALL VALVE | 1 1/2" | MB | FILTERS OUTLET ISOLATION |
| V-009 | BALL VALVE | 1/2" | MB | PREPOLISHER SAMPLE PORT |
| V-010 | BALL VALVE | 1/2" | MB | POST POLISHER SAMPLE PORT |
| V-011 | BALL VALVE | 1/2" | MB | F-104 OUTER DRAIN |
| V-012 | BALL VALVE | 1/2" | MB | F-104 INNER DRAIN |
| V-013 | BALL VALVE | 1/2" | MB | F-105 OUTER DRAIN |
| V-014 | BALL VALVE | 1/2" | MB | F-105 INNER DRAIN |
| V-015 | BALL VALVE | 2" | MB | INNER SHELL DRAIN |
| V-016 | BALL VALVE | 1 1/2" | MB | OUTER SHELL DRAIN |
| V-017 | BALL VALVE | 1 1/2" | MB | MANIFOLD DRAIN |

LEGEND

- - BALL VALVE
- ⊠ - GATE VALVE
- ⊞ - FILTER/STRAINER
- ⊞ - MOTORIZED BALL VALVE
- ⊞ - SOLENOID OPERATED VALVE
- ⊞ - 3 WAY SOLENOID OPERATED VALVE
- ⊞ - FLOW INDICATOR GPM& LPM
- ⊞ - CHECK VALVE
- ~ - FH - FLEX HOSE
- V - BALL VALVE
- BL - BATTERY LIMITS
- SV - SOLENOID VALVE
- S - SEPARATOR
- CV - CHECK VALVE
- P - PUMP
- LS - LEVEL SWITCH
- TPH - OIL MONITOR
- LT - LEVEL TRANSMITTER
- F - FILTER/STRAINER
- PR - PRESSURE REDUCING VALVE



LEGEND:
 FRP - FIBERGLASS REINFORCED PLASTIC
 CS - CARBON STEEL
 FG - FIBERGLASS
 MB - MARINE BRONZE
 PP - POLYPROPYLENE
 SS - STAINLESS STEEL
 BR - YELLOW BRASS

- NOTES:
- SEPARATOR AND FILTER VESSEL ARE CARBON STEEL CONSTRUCTION
 - TUBING & TUBE FITTINGS ARE POLYETHYLENE
 - ALL PIPE AND FITTINGS ARE RED BRASS AND BRONZE
 - IF H2O IS FROM A POTABLE SUPPLY AN ANTI-SIPHON BACK FLOW PREVENTER MUST BE INSTALLED ON THE INLET OF SOV 101
 - IF THE CLEAN WATER SUPPLY PRESSURE IS GREATER THAN 15 PSIG, A PRESSURE REGULATOR SHOULD BE INSTALLED ON THE INLET OF SOV 101
 - FR-101 IS A FLOW RESTRICTOR THAT IS PLACED INSIDE THE FITTING ON THE OUTLET OF THE TPH METER AND IS NOT VISIBLE FROM THE OUTSIDE.

| | | | | |
|------|---------|----|-------|----------------|
| - | - | - | - | - |
| - | - | - | - | - |
| - | - | - | - | - |
| - | - | - | - | - |
| M1.0 | DEC2014 | TB | DCD | FOR SUBMISSION |
| NO. | DATE | BY | CHK'D | REVISION |

| | |
|--------------------|---------|
| REFERENCE DRAWINGS | DWG NO. |
|--------------------|---------|

MYCELX 

TECHNOLOGIES CORPORATION
 2420 Meadowbrook Pkwy.
 Duluth, Georgia 30096
 888.306.6843, Fax 770.534.3117

10.0 M3/HR BILGE UNIT

P&ID

| | | | | |
|---------------|------|---------|-----------------|----------|
| CUSTOMER: TBD | | | | |
| DRAWN BY: | TB | JOB NO. | - | |
| CHECKED BY: | DCD | DATE: | DOCUMENT # | 1 OF 1 |
| SCALE: | NONE | DEC2014 | 10.0M3PID001RM1 | REV M1.0 |

| BILL OF MATERIAL | | | |
|------------------|-----|---|--------------------|
| # | QTY | DESCRIPTION | PART NUMBER |
| 1 | 1 | 45 PAINTED VESSEL | 60126 |
| 2 | 36 | BOLT, HEX - 45778 - 5/8"X3, SAE J429 GR8 YELLOW ZINC | 40316 |
| 3 | 36 | NUT - YELLOW ZINC - 5/8"-11, FINISH, SAE J995 GR8 | 40338 |
| 4 | 72 | WASHER - YELLOW ZINC - 5/8" SAE, THRU HARD | 40345 |
| 5 | 1 | GASKET - TOP, 45 - NEOPRENE - 47.125 OD X .025 | 50543 |
| 6 | 1 | FLOW INDICATOR - BRONZE - 5-50 GPM | 40370 |
| 7 | 1 | VALVE GATE - BRONZE - 1.5 GATE | 40855 |
| 8 | 17 | VALVE BALL - BRONZE - .5 BALL | 40837 |
| 9 | 4 | VALVE BALL - BRONZE - 1.5 BALL | 40852 |
| 10 | 1 | VALVE BALL - BRONZE - 2 BALL | 40856 |
| 11 | 1 | VALVE CHECK - BRONZE - 2 CHECK SWING | 40858 |
| 12 | 1 | VALVE CHECK - BRONZE - 1.5 CHECK SPRING | 40853 |
| 13 | 1 | Y-STRAINER - THR - BRONZE - 2 IN 125# 80 MESH | 40632 |
| 14 | 1 | BILGMON 488 - MONITOR - 15 PPM, 115 VAC | 40458 |
| 15 | 1 | CONTROL PANEL - THREE PHASE - 304SS ENCLOSURE - *MUST ADD THERMAL OVERLOAD* | 60537 |
| 16 | 1 | FLANGE - SA105 - 0.5 IN 150# SCH 40 THR RF | 40639 |
| 17 | 1 | FLANGE - SA105 - 0.75 IN 150# SCH 40 THR. | 40644 |
| 18 | 1 | FLANGE - SA105 - 1.0 IN 150# THR RF | 40650 |
| 19 | 1 | FLANGE - SA105 - 1.5 IN 150# THR. RF | 40659 |
| 20 | 1 | FLANGE - SA105 - 2.0 IN 150# THR RF | 40670 |
| 21 | 1 | BACKPLATE - CONTROL PANEL, LARGE - A1011 - 39 X 15 X 0.134 | 50123 |
| 22 | 4 | GAUGE - PRESSURE - 2.5" 100PSI/BAR, 316 STAINLESS STEM 1/4" LM, GLYCOL | 41178 |
| 23 | 1 | GAUGE - VACUUM - 2.5" HG/15PSI - 316 STAINLESS STEM 1/4" LM, GLYCOL | 41177 |
| 24 | 9 | UNISTRUT END CAPS - GREEN/GREY - | 40024 |
| 25 | 1 | SOLENOID VALVE - 18A43 - BRONZE - 0.75", 120 VAC 50/60 | 40395 |
| 26 | 1 | SOLENOID VALVE - 18A44 - BRONZE - 1", 120 VAC 50/60 | 40398 |
| 27 | 1 | SOLENOID VALVE - 35A46 - BRONZE - 1.5", 120 VAC 50/60 | 40405 |
| 28 | 1 | MOV VALVE BODY - BRONZE - 0.75" | 40386 |
| 29 | 1 | MOV - NEMA 4 - VALVSYS - 125 IN LBS/115 VAC | 40380 |
| 30 | 1 | LEVEL SERIES 3E3B PROBE BASE - RED BRASS - 2" | 40375 |
| 31 | 1 | CDU120/5 2HP 50/60HZ 208-460 VAC | 60171 |
| 32 | 1 | TUBING KIT - ACETAL GREY | 60210 |
| 33 | 2 | STRUT - 32 INCH | 50923 |
| 34 | 1 | STRUT - MYCELX 45 - FRONT | 50918 |
| 35 | 1 | BRACKET - MOV BRACE | 50783 |
| 36 | 1 | SKID - ASSEMBLY, 45M(10.0) | 50928 |
| 37 | 1 | LEVEL PROBE SET - 18" (45) | 60194 |
| 38 | 2 | MYCELX MX 22 FILTERS | SUPPLIED BY MYCELX |
| 39 | 1 | MYCELX BAG FILTER | SUPPLIED BY MYCELX |

DIMENSIONS IN [] ARE IN MILLIMETERS

| | | | | | |
|------|---------|----|-------|----------------|---|
| - | - | - | - | - | - |
| - | - | - | - | - | - |
| - | - | - | - | - | - |
| - | - | - | - | - | - |
| M1.0 | MAR2015 | TB | DCD | FOR SUBMISSION | |
| NO. | DATE | BY | CHK'D | REVISION | |

| | |
|--------------------|---------|
| REFERENCE DRAWINGS | DWG NO. |
|--------------------|---------|



TECHNOLOGIES CORPORATION
 2420 Meadowbrook Pkwy.
 Duluth, Georgia 30096
 888.306.6843, Fax 770.534.3117

10.0 M3/HR BILGE UNIT
 BILL OF MATERIAL

| | | | | | |
|---------------|------|---------|-----------------|--------|------|
| CUSTOMER: TBD | | | | | |
| DRAWN BY: | TB | JOB NO. | - | | |
| CHECKED BY: | DCD | DATE: | DOCUMENT # | 1 OF 1 | |
| SCALE: | NONE | MAR2015 | 10.0M3BOM001RM1 | REV | M1.0 |