
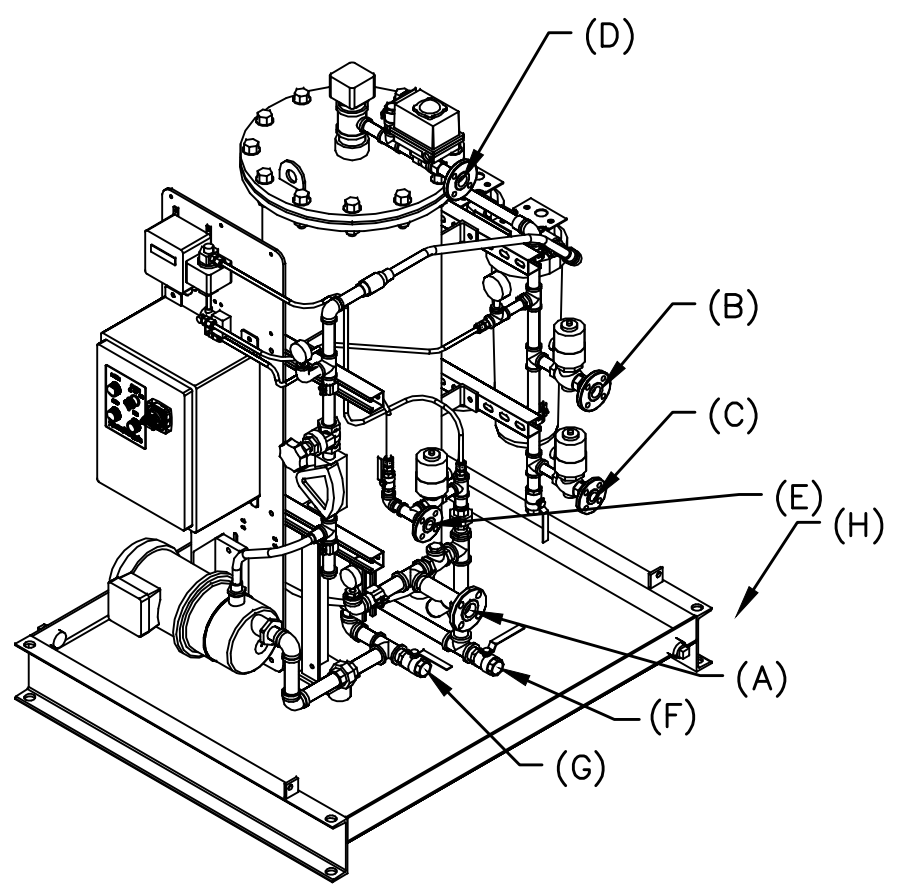
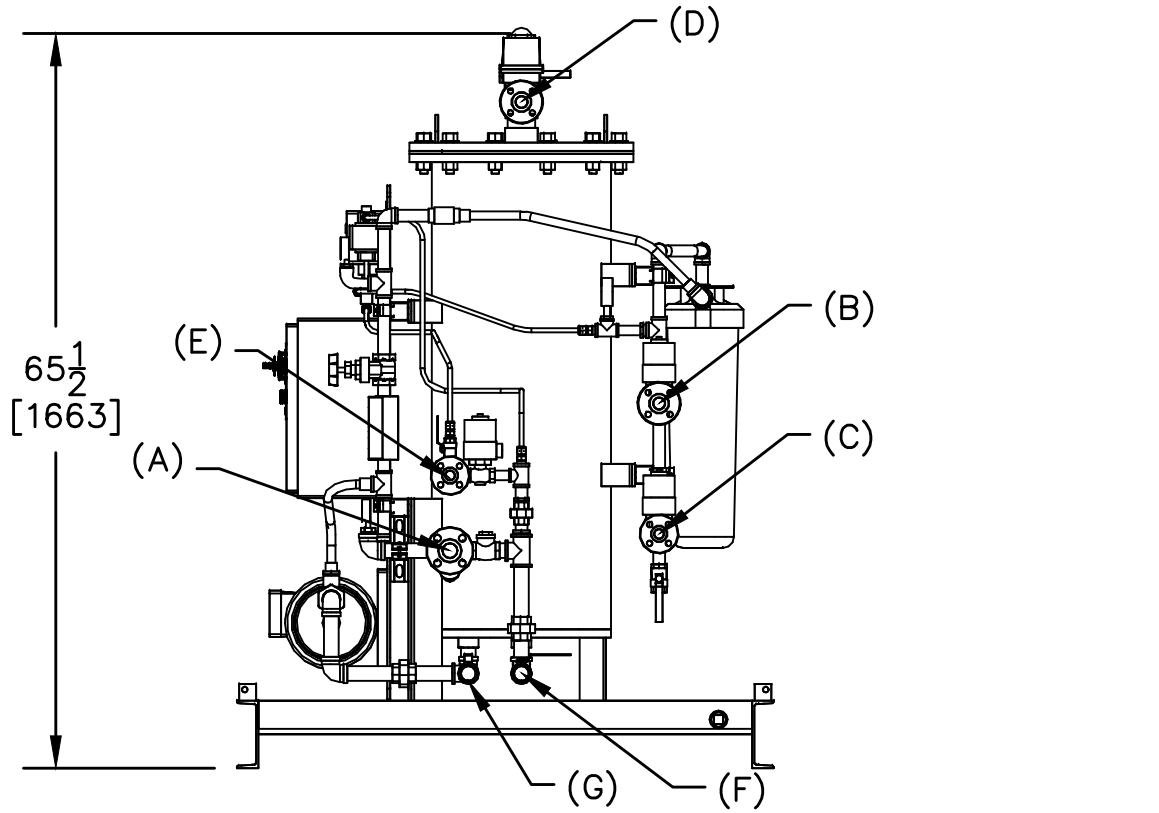
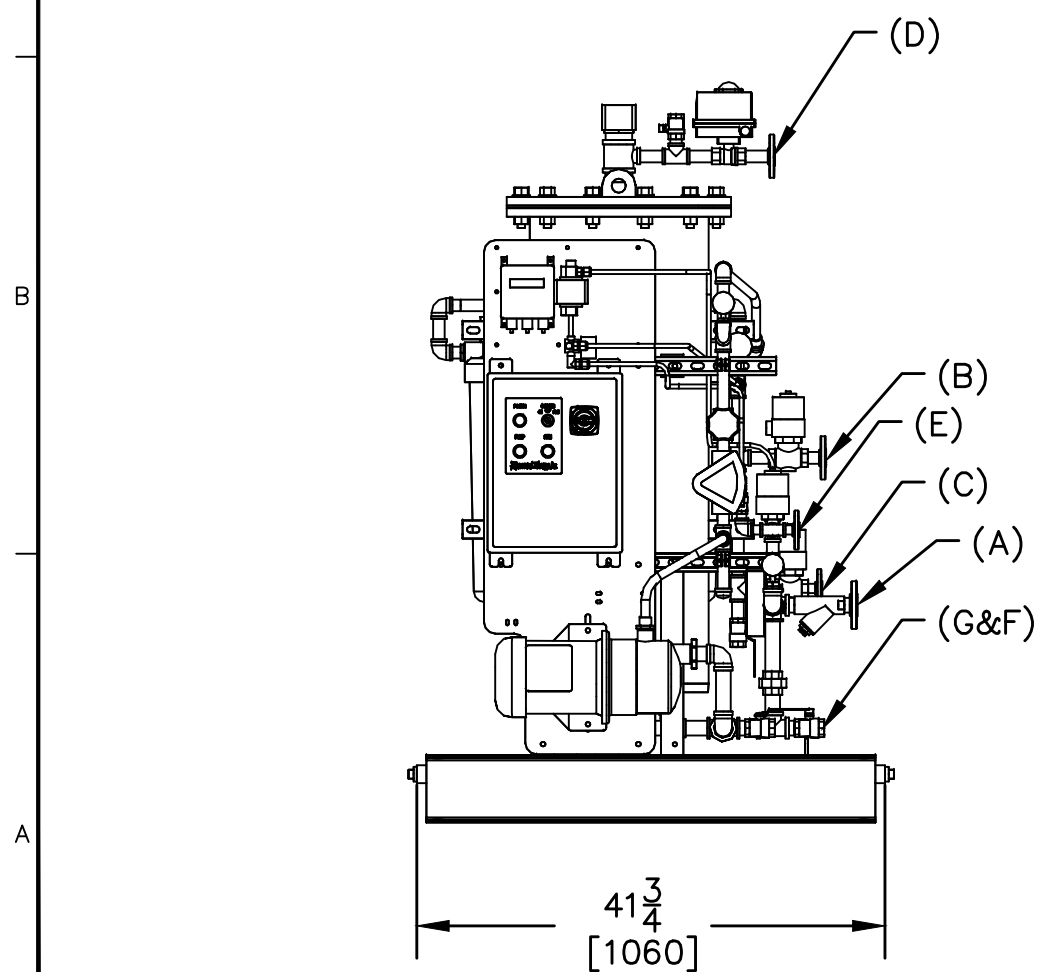
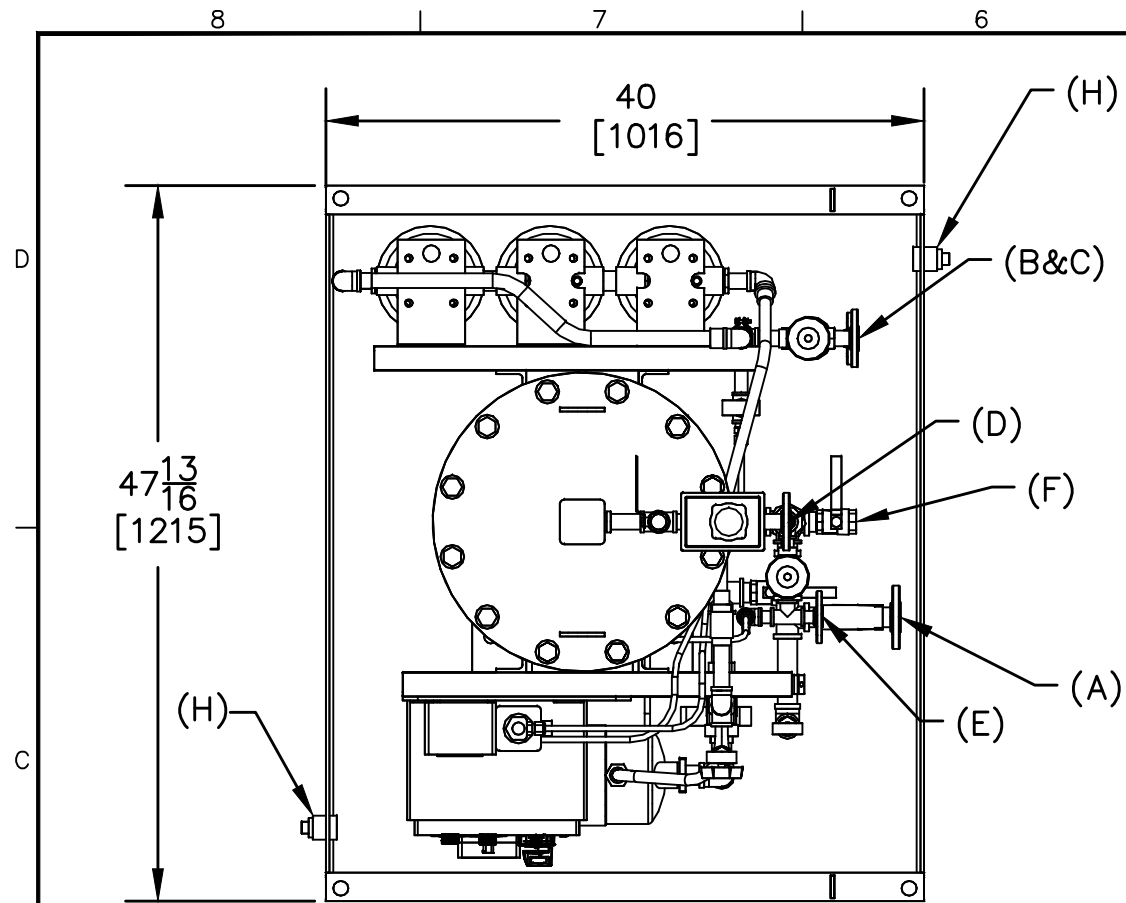


-	-	-	-	
-	-	-	-	
-	-	-	-	
M1	DEC2014	TB	DCD	FOR SUBMISSION
NO.	DATE	BY	CHK'D	REVISION
REFERENCE DRAWINGS				DWG NO.
<b>MYCELX</b> 				
TECHNOLOGIES CORPORATION 2420 Meadowbrook Pkwy. Duluth, Georgia 30096 888.306.6843, Fax 770.534.3117				
1.0 M3/HR BILGE UNIT				
LABELED VIEW				
CUSTOMER: TBD				
DRAWN BY:	TB	JOB NO.	TBD	
CHECKED BY:	DCD	DATE:	DOCUMENT #	1 OF 9
SCALE:	NONE	DEC2014	10M3LBV001RM1	REV M1



**CONNECTION SCHEDULE**

- (A)-OILY WATER INLET 1" 150# RF ANSI FLANGE
- (B)-WATER DISCHARGE 3/4" 150# RF ANSI FLANGE
- (C)-RECYCLE 1/2" 150# RF ANSI FLANGE
- (D)-OIL DISCHARGE 3/4" 150# RF ANSI FLANGE
- (E)-FILL WATER SUPPLY 1/2" 150# RF ANSI FLANGE
- (F)-CENTER DRAIN 1" NPT
- (G)-OUTER DRAIN 1" NPT
- (H)-PAN DRAIN 1" NPT ONE EACH SIDE

**PIPE LINE RECOMMENDATIONS**

- 1" OILY WATER SUPPLY LINE
- 3/4" RECYCLE LINE
- 1" DISCHARGE LINE
- 3/4" OIL OUT LINE
- 1/2" FILL WATER IN LINE

**UTILITY REQUIREMENTS**

- POWER:**  
1.5 KW SERVICE 120-480VAC 1 OR 3 PHASE  
50-60 CYCLE
- MAKEUP WATER:**  
15PSI, 5GPM CLEAN (NO OIL) FRESH OR SEA WATER
- CELL CLEAN:**  
1-2 LITERS/DAY POTABLE WATER @15PSI
- NO AIR REQUIRED:**

**PAINT SYSTEM**

- BLAST SSPC SS-10 2.0-3.0 MIL PROFILE
- PRIMER COAT SHERWIN WILLIAMS
- RECOATABLE EPOXY PRIMER 4-6 MIL DRY
- HIGH SOLIDS POLYURETHANE 2-3 MILS DRY
- TOP COAT SHERWIN WILLIAMS
- RAL 7035
- DRY WEIGHT 775 lbs 351.5 kg's
- WET WEIGHT 1103 lbs 500.3 kg's

NOTE: CONNECTION SCHEDULE IS THE ACTUAL CONNECTION SIZE TO THE UNIT. THE PIPING SCHEDULE IS THE RECOMMENDED PIPE RUN SIZING FOR BEST FLOW.

M1	DEC2014	TB	DCD	FOR SUBMISSION
NO.	DATE	BY	CHK'D	REVISION

REFERENCE DRAWINGS	DWG NO.
--------------------	---------

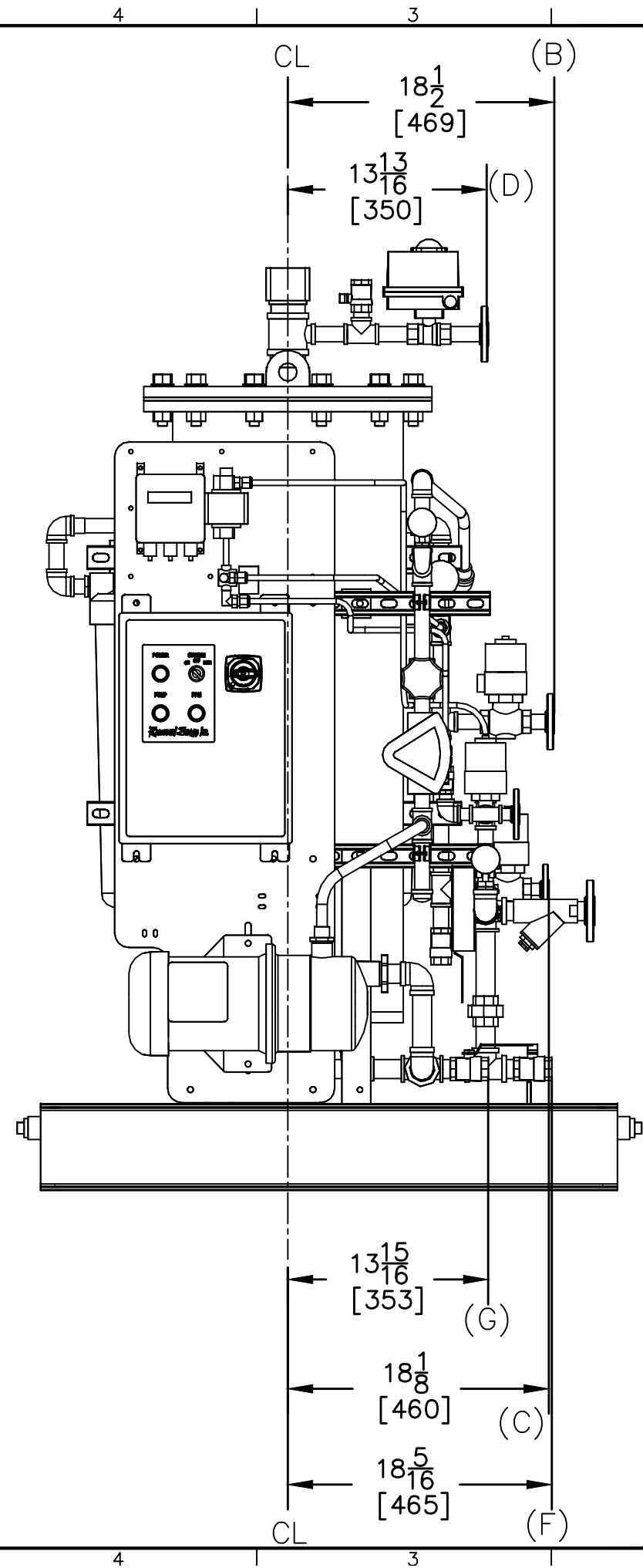
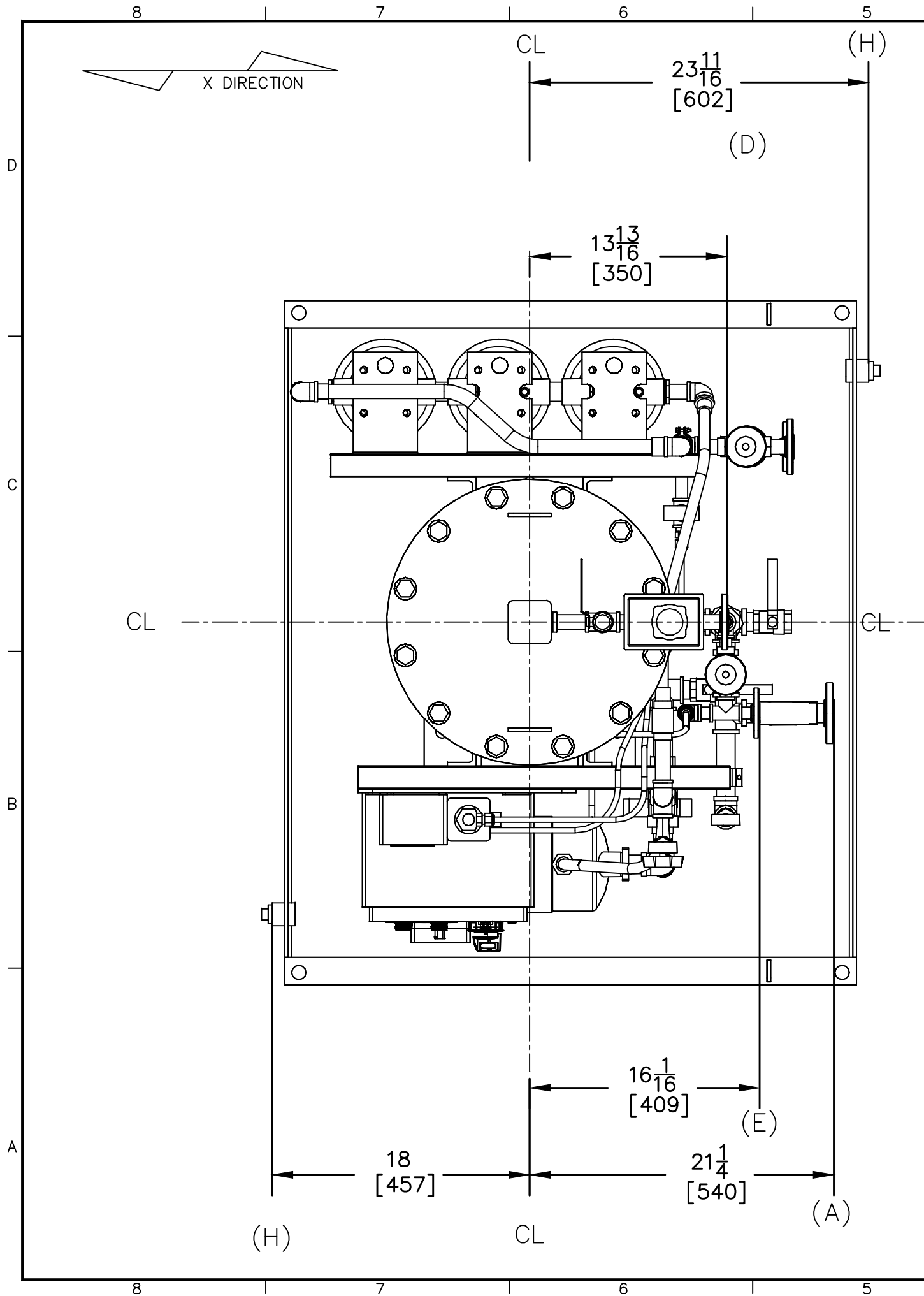


TECHNOLOGIES CORPORATION  
2420 Meadowbrook Pkwy.  
Duluth, Georgia 30096  
888.306.6843, Fax 770.534.3117

1.0 M3/HR BILGE UNIT  
GENERAL ARRANGEMENT

CUSTOMER: TBD				
DRAWN BY:	TB	JOB NO.	TBD	
CHECKED BY:	DCD	DATE:	DOCUMENT #	2 OF 9
SCALE:	NONE	DEC2014	10M3GNA001RM1	REV M1

DIMENSIONS IN [ ] ARE MILLIMETER



**CONNECTION SCHEDULE**

- (A)–OILY WATER INLET 1" 150# RF ANSI FLANGE
- (B)–WATER DISCHARGE 3/4" 150# RF ANSI FLANGE
- (C)–RECYCLE 1/2" 150# RF ANSI FLANGE
- (D)–OIL DISCHARGE 3/4" 150# RF ANSI FLANGE
- (E)–FILL WATER SUPPLY 1/2" 150# RF ANSI FLANGE
- (F)–CENTER DRAIN 1" NPT
- (G)–OUTER DRAIN 1" NPT
- (H)–PAN DRAIN 1" NPT ONE EACH SIDE

DIMENSIONS IN [ ] ARE MILLIMETER

-	-	-	-	
-	-	-	-	
-	-	-	-	
M1	DEC2014	TB	DCD	FOR SUBMISSION
NO.	DATE	BY	CHK'D	REVISION

REFERENCE DRAWINGS	DWG NO.
--------------------	---------



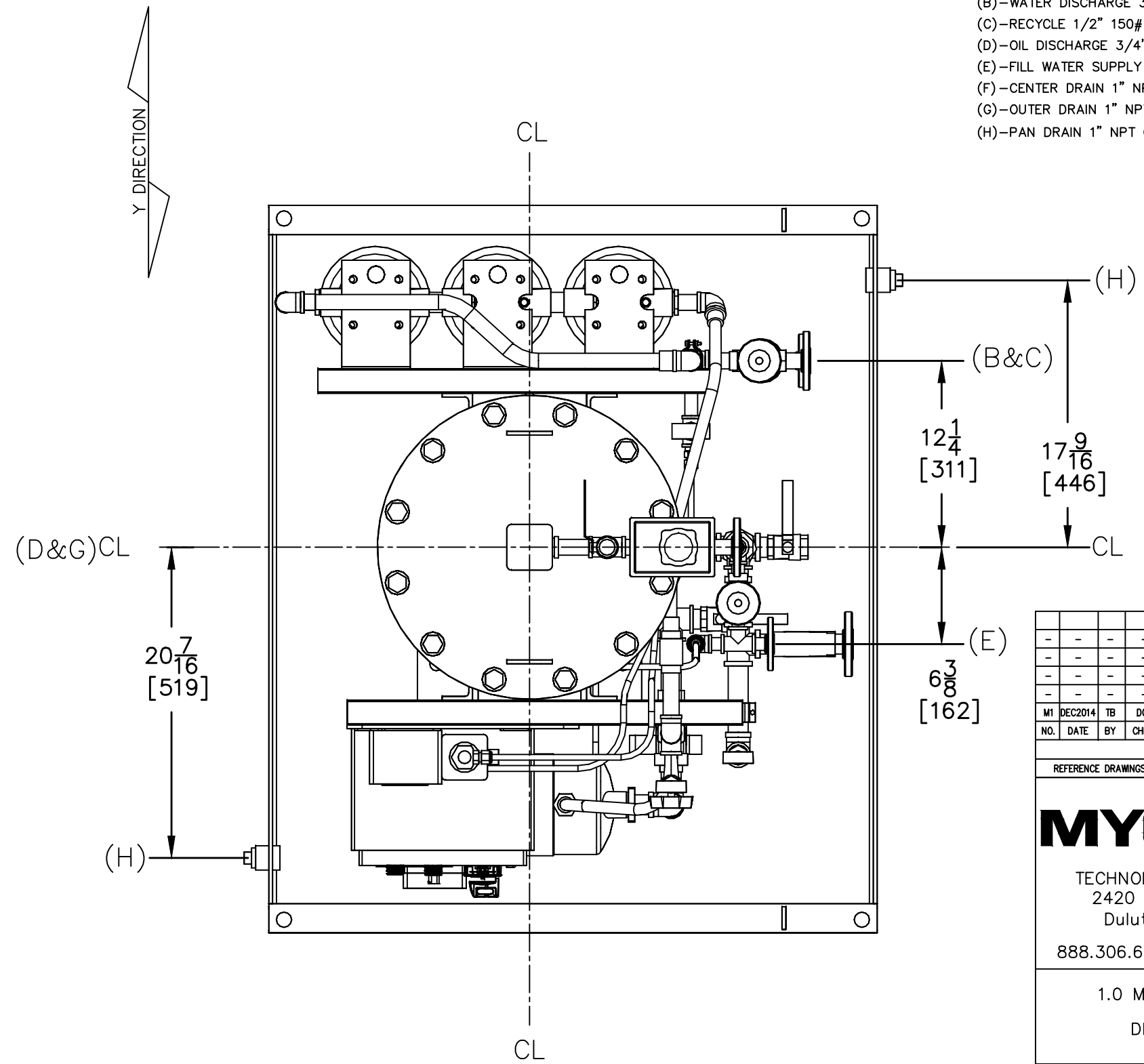
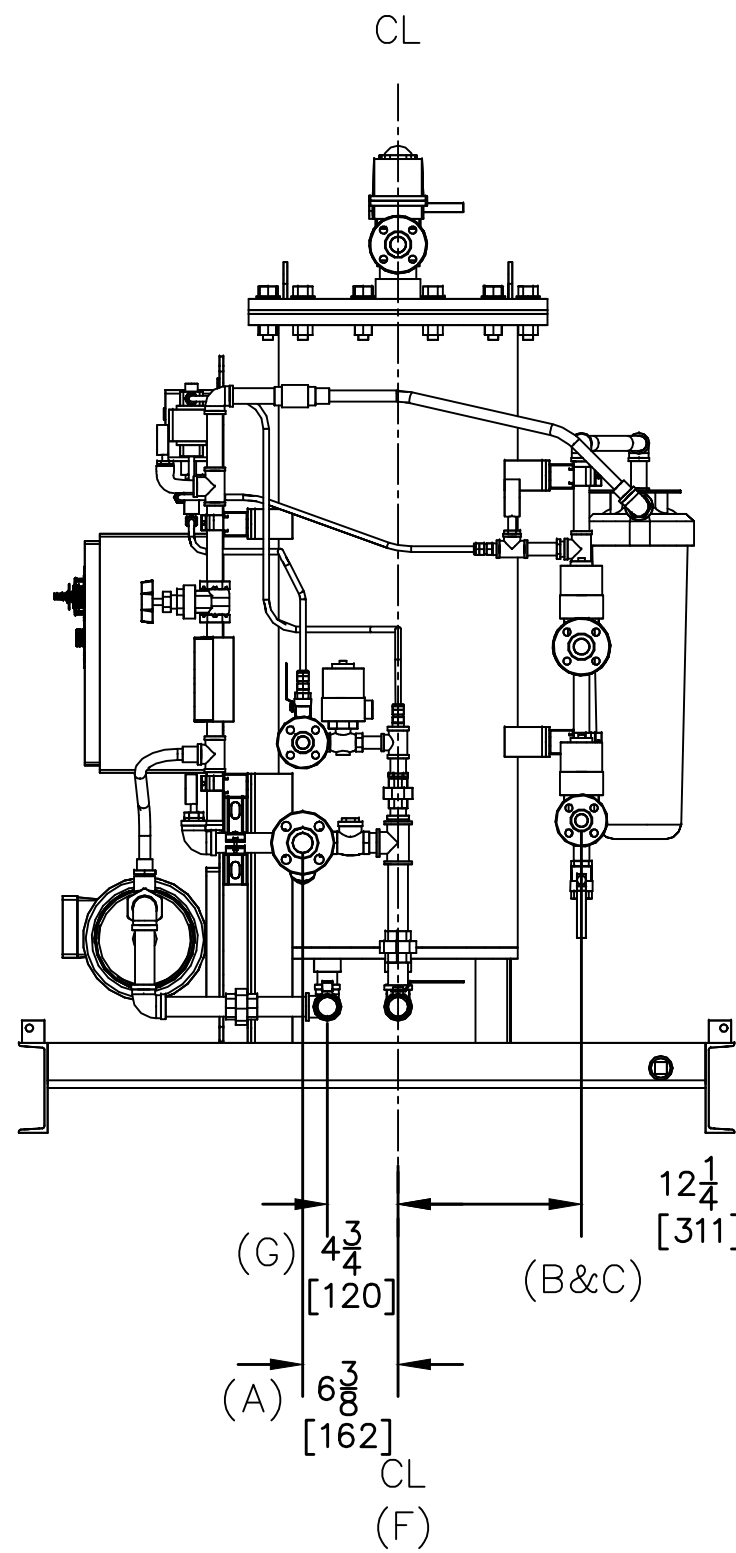
TECHNOLOGIES CORPORATION  
 2420 Meadowbrook Pkwy.  
 Duluth, Georgia 30096  
 888.306.6843, Fax 770.534.3117

1.0 M3/HR BILGE UNIT  
 DIMENSIONS X

CUSTOMER: TBD				
DRAWN BY:	TB	JOB NO.	TBD	
CHECKED BY:	DCD	DATE:	DOCUMENT #	3 OF 9
SCALE:	NONE	DECT2014	10M3DMX001RM1	REV M1

CONNECTION SCHEDULE

- (A)–OILY WATER INLET 1" 150# RF ANSI FLANGE
- (B)–WATER DISCHARGE 3/4" 150# RF ANSI FLANGE
- (C)–RECYCLE 1/2" 150# RF ANSI FLANGE
- (D)–OIL DISCHARGE 3/4" 150# RF ANSI FLANGE
- (E)–FILL WATER SUPPLY 1/2" 150# RF ANSI FLANGE
- (F)–CENTER DRAIN 1" NPT
- (G)–OUTER DRAIN 1" NPT
- (H)–PAN DRAIN 1" NPT ONE EACH SIDE



M1	DEC2014	TB	DCD	FOR SUBMISSION
NO.	DATE	BY	CHK'D	REVISION

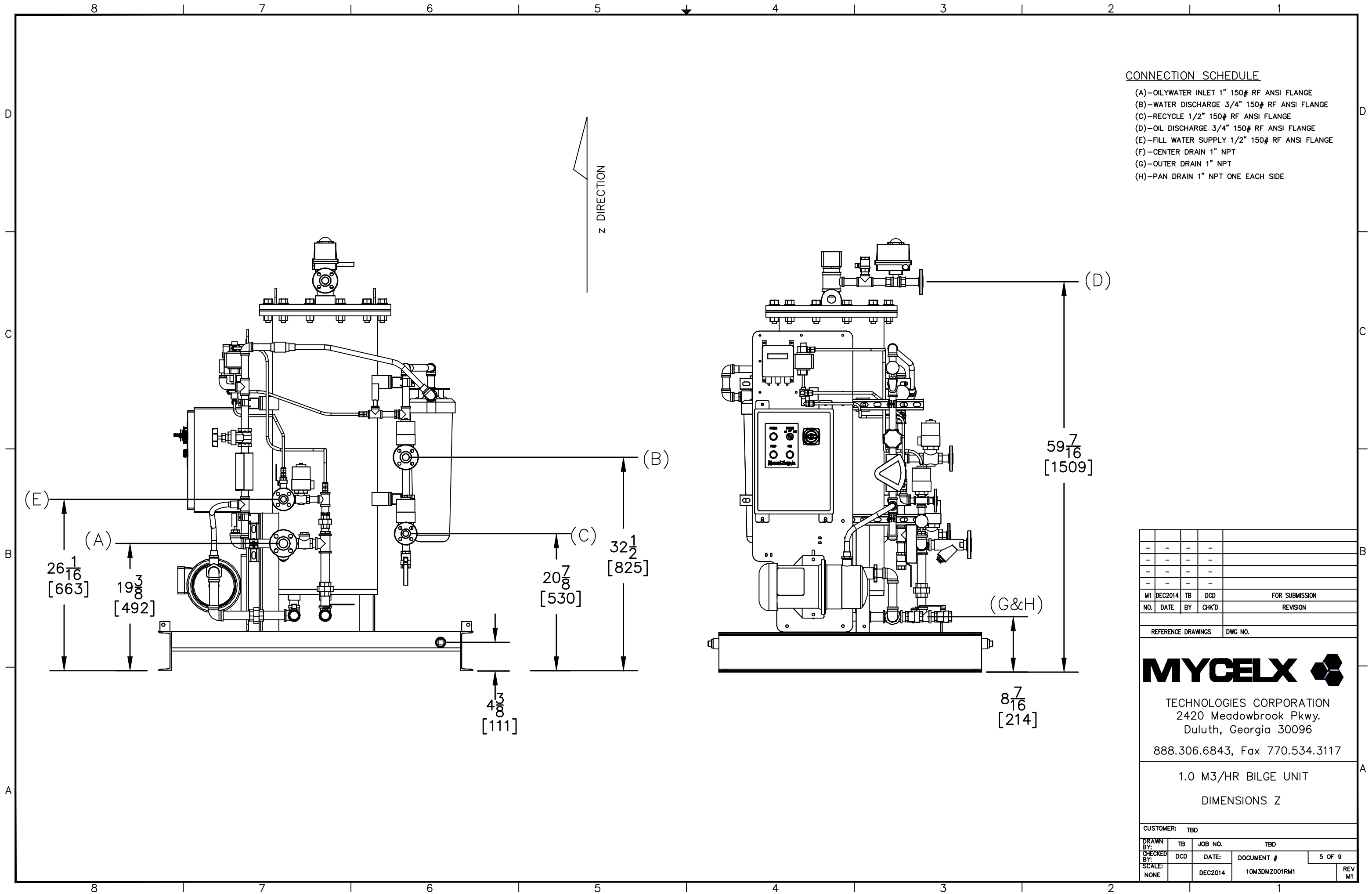
REFERENCE DRAWINGS	DWG NO.
--------------------	---------

**MYCELX** 

TECHNOLOGIES CORPORATION  
 2420 Meadowbrook Pkwy.  
 Duluth, Georgia 30096  
 888.306.6843, Fax 770.534.3117

1.0 M3/HR BILGE UNIT  
 DIMENSIONS Y

CUSTOMER: TBD				
DRAWN BY:	TB	JOB NO.	TBD	
CHECKED BY:	DCD	DATE:	DOCUMENT #	4 OF 9
SCALE:	NONE	SEPT2014	10M3DMY001RM1	REV M1



**CONNECTION SCHEDULE**

- (A)–OILY WATER INLET 1" 150# RF ANSI FLANGE
- (B)–WATER DISCHARGE 3/4" 150# RF ANSI FLANGE
- (C)–RECYCLE 1/2" 150# RF ANSI FLANGE
- (D)–OIL DISCHARGE 3/4" 150# RF ANSI FLANGE
- (E)–FILL WATER SUPPLY 1/2" 150# RF ANSI FLANGE
- (F)–CENTER DRAIN 1" NPT
- (G)–OUTER DRAIN 1" NPT
- (H)–PAN DRAIN 1" NPT ONE EACH SIDE

-	-	-	-	
-	-	-	-	
-	-	-	-	
M1	DEC2014	TB	DCD	FOR SUBMISSION
NO.	DATE	BY	CHK'D	REVISION

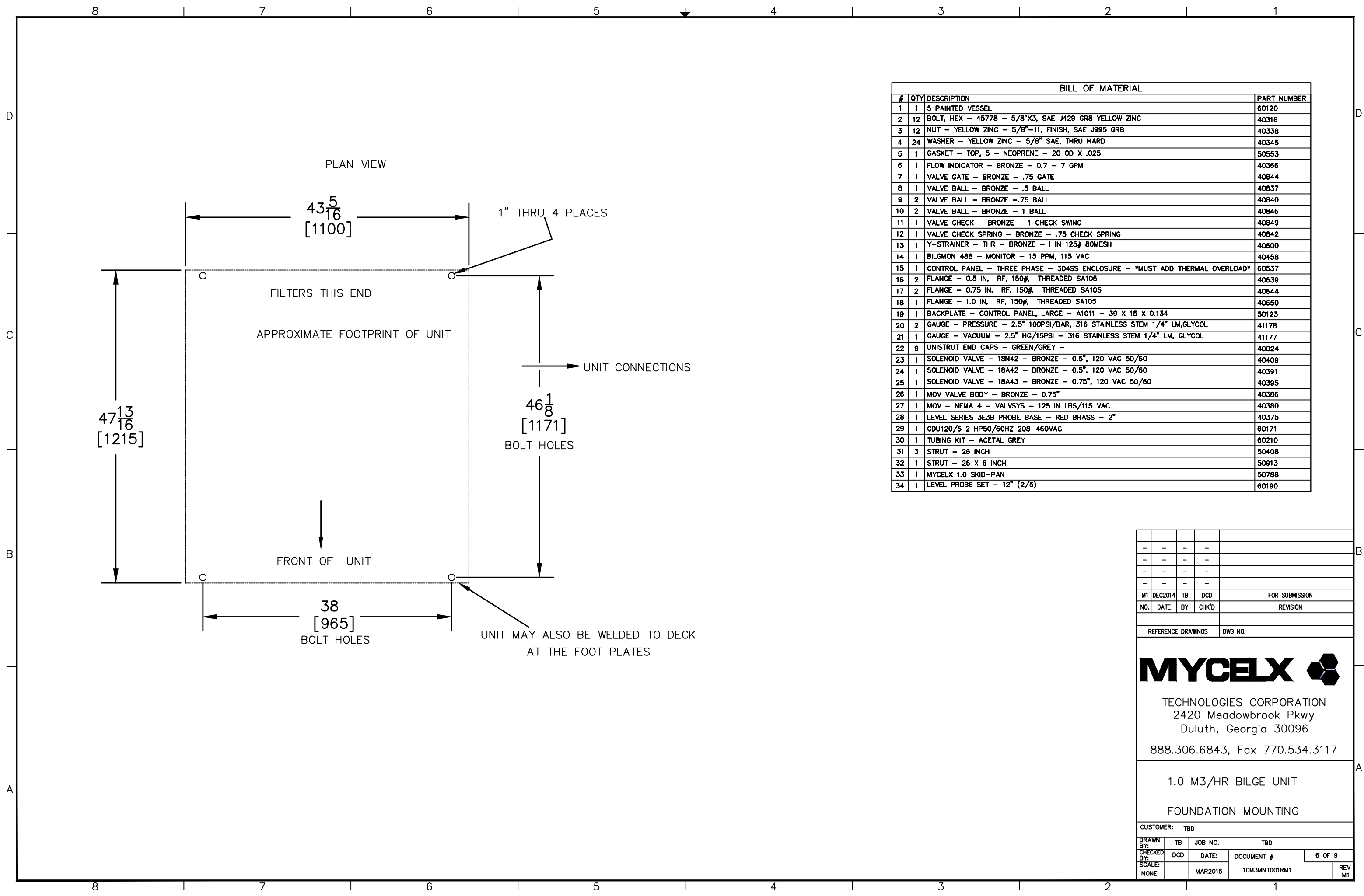
REFERENCE DRAWINGS	DWG NO.
--------------------	---------




TECHNOLOGIES CORPORATION  
 2420 Meadowbrook Pkwy.  
 Duluth, Georgia 30096  
 888.306.6843, Fax 770.534.3117

1.0 M3/HR BILGE UNIT  
 DIMENSIONS Z

CUSTOMER: TBD				
DRAWN BY:	TB	JOB NO.	TBD	
CHECKED BY:	DCD	DATE:	DOCUMENT #	5 OF 9
SCALE:	NONE	DEC2014	10M3DMZ001RM1	REV M1



BILL OF MATERIAL			
#	QTY	DESCRIPTION	PART NUMBER
1	1	5 PAINTED VESSEL	60120
2	12	BOLT, HEX - 45778 - 5/8"x3, SAE J429 GR8 YELLOW ZINC	40316
3	12	NUT - YELLOW ZINC - 5/8"-11, FINISH, SAE J995 GR8	40338
4	24	WASHER - YELLOW ZINC - 5/8" SAE, THRU HARD	40345
5	1	GASKET - TOP, 5 - NEOPRENE - 20 OD X .025	50553
6	1	FLOW INDICATOR - BRONZE - 0.7 - 7 GPM	40366
7	1	VALVE GATE - BRONZE - .75 GATE	40844
8	1	VALVE BALL - BRONZE - .5 BALL	40837
9	2	VALVE BALL - BRONZE -.75 BALL	40840
10	2	VALVE BALL - BRONZE - 1 BALL	40846
11	1	VALVE CHECK - BRONZE - 1 CHECK SWING	40849
12	1	VALVE CHECK SPRING - BRONZE - .75 CHECK SPRING	40842
13	1	Y-STRAINER - THR - BRONZE - 1 IN 125# 80MESH	40600
14	1	BILGMON 48B - MONITOR - 15 PPM, 115 VAC	40458
15	1	CONTROL PANEL - THREE PHASE - 304SS ENCLOSURE - *MUST ADD THERMAL OVERLOAD*	60537
16	2	FLANGE - 0.5 IN, RF, 150#, THREADED SA105	40639
17	2	FLANGE - 0.75 IN, RF, 150#, THREADED SA105	40644
18	1	FLANGE - 1.0 IN, RF, 150#, THREADED SA105	40650
19	1	BACKPLATE - CONTROL PANEL, LARGE - A1011 - 39 X 15 X 0.134	50123
20	2	GAUGE - PRESSURE - 2.5" 100PSI/BAR, 316 STAINLESS STEM 1/4" LM, GLYCOL	41178
21	1	GAUGE - VACUUM - 2.5" HG/15PSI - 316 STAINLESS STEM 1/4" LM, GLYCOL	41177
22	9	UNISTRUT END CAPS - GREEN/GREY -	40024
23	1	SOLENOID VALVE - 18N42 - BRONZE - 0.5", 120 VAC 50/60	40409
24	1	SOLENOID VALVE - 18A42 - BRONZE - 0.5", 120 VAC 50/60	40391
25	1	SOLENOID VALVE - 18A43 - BRONZE - 0.75", 120 VAC 50/60	40395
26	1	MOV VALVE BODY - BRONZE - 0.75"	40386
27	1	MOV - NEMA 4 - VALSYS - 125 IN LBS/115 VAC	40380
28	1	LEVEL SERIES 3E3B PROBE BASE - RED BRASS - 2"	40375
29	1	CDU120/5 2 HP50/60HZ 208-460VAC	60171
30	1	TUBING KIT - ACETAL GREY	60210
31	3	STRUT - 26 INCH	50408
32	1	STRUT - 26 X 6 INCH	50913
33	1	MYCELX 1.0 SKID-PAN	50788
34	1	LEVEL PROBE SET - 12" (2/5)	60190

-	-	-	-	
-	-	-	-	
-	-	-	-	
-	-	-	-	
M1	DEC2014	TB	DCD	FOR SUBMISSION
NO.	DATE	BY	CHK'D	REVISION
REFERENCE DRAWINGS				DWG NO.
<b>MYCELX</b> 				
TECHNOLOGIES CORPORATION 2420 Meadowbrook Pkwy. Duluth, Georgia 30096 888.306.6843, Fax 770.534.3117				
1.0 M3/HR BILGE UNIT FOUNDATION MOUNTING				
CUSTOMER: TBD				
DRAWN BY:	TB	JOB NO.	TBD	
CHECKED BY:	DCD	DATE:	DOCUMENT #	6 OF 9
SCALE:	NONE	MAR2015	10M3MNT001RM1	REV M1

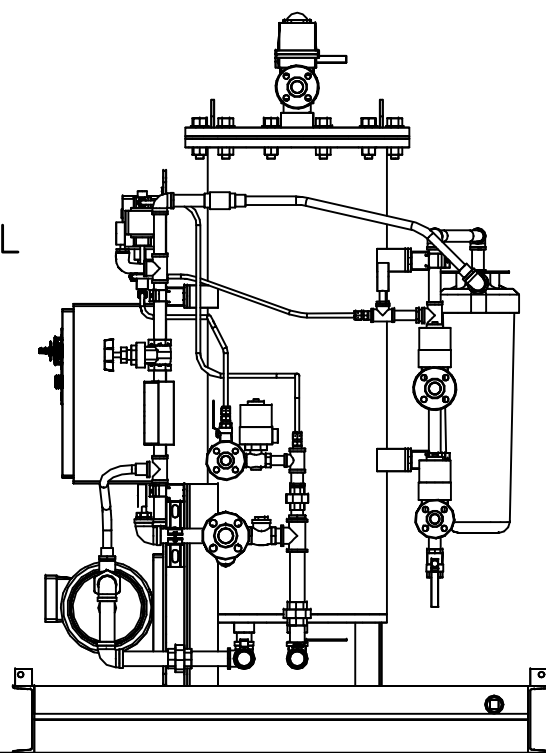


THE INTERNAL PACKING HAS A 7-10 YEAR LIFE  
ADDITIONAL HEAD ROOM MAY BE REQUIRED  
FOR SERVICE AT THAT SERVICE INTERVAL

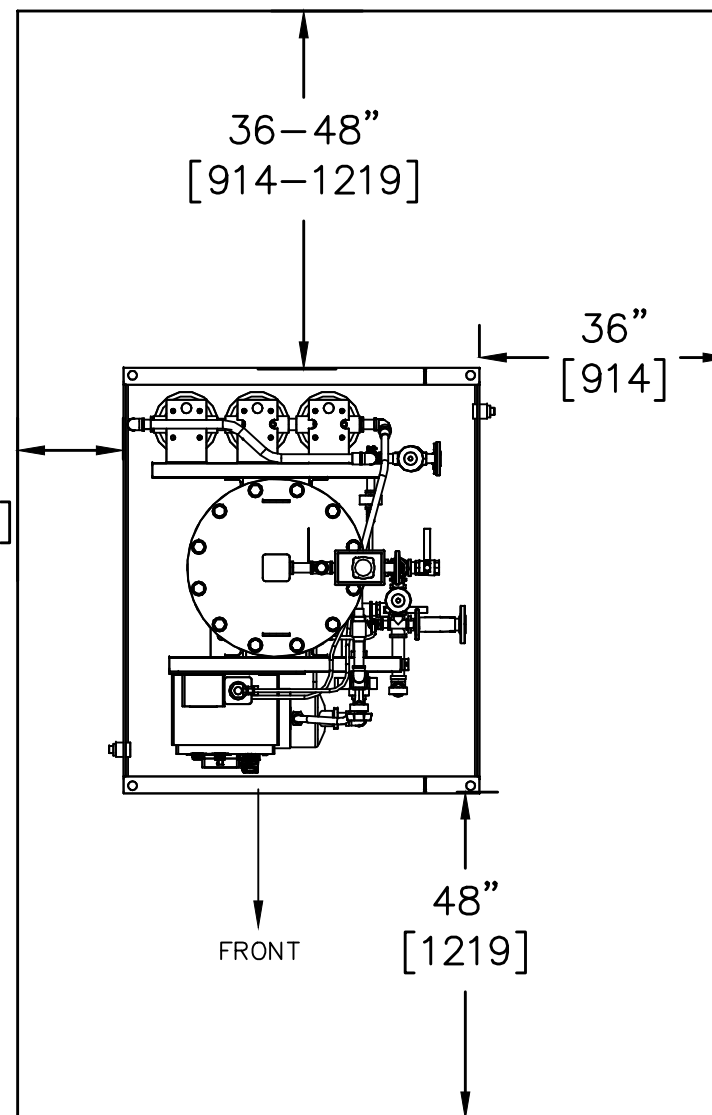
NORMAL HEADROOM CLEARANCE NEEDED TO CHANGE  
THE POST FILTER CARTRIDGES ON REAR OF UNIT

72-80" NOMINAL  
[1828-2032]

96-120"  
[2438-3048]



0-6"  
[0-152]



36-48"  
[914-1219]

36"  
[914]

48"  
[1219]

FRONT

PLAN VIEW

NO SERVICEABLE COMPONENTS ARE LOCATED ON THE LEFT SIDE OF THE UNIT. ACCESS ON RIGHT IS TO FACILITATE PIPING CONNECTIONS AND REAR SIDE IS FOR FILTER MAINTENANCE. ALL MAINTENANCE COMPONENTS ARE SERVICED FROM THE FRONT OR RIGHT SIDE

-	-	-	-	
-	-	-	-	
-	-	-	-	
-	-	-	-	
M1	DEC2014	TB	DCD	FOR SUBMISSION
NO.	DATE	BY	CHK'D	REVISION

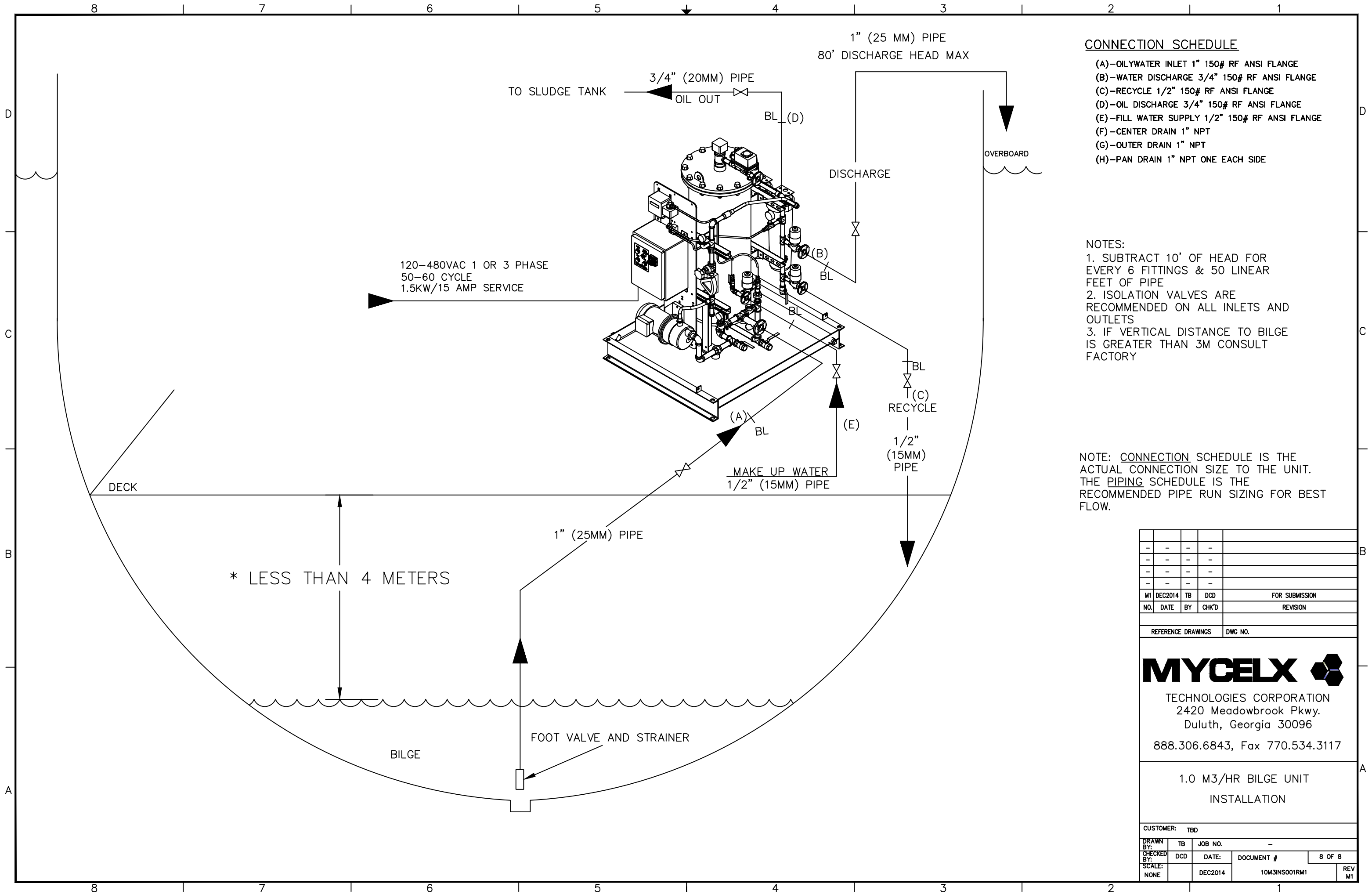
REFERENCE DRAWINGS	DWG NO.
--------------------	---------

**MYCELX**

TECHNOLOGIES CORPORATION  
2420 Meadowbrook Pkwy.  
Duluth, Georgia 30096  
888.306.6843, Fax 770.534.3117

1.0 M3/HR BILGE UNIT  
SERVICE ACCESS CLEARANCES

CUSTOMER:	TBD
DRAWN BY:	TB
CHECKED BY:	DCD
SCALE:	NONE
JOB NO.	TBD
DATE:	DEC2014
DOCUMENT #	10M3MAN001RM1
7 OF 9	REV M1



**CONNECTION SCHEDULE**

- (A)-OILY WATER INLET 1" 150# RF ANSI FLANGE
- (B)-WATER DISCHARGE 3/4" 150# RF ANSI FLANGE
- (C)-RECYCLE 1/2" 150# RF ANSI FLANGE
- (D)-OIL DISCHARGE 3/4" 150# RF ANSI FLANGE
- (E)-FILL WATER SUPPLY 1/2" 150# RF ANSI FLANGE
- (F)-CENTER DRAIN 1" NPT
- (G)-OUTER DRAIN 1" NPT
- (H)-PAN DRAIN 1" NPT ONE EACH SIDE

- NOTES:
1. SUBTRACT 10' OF HEAD FOR EVERY 6 FITTINGS & 50 LINEAR FEET OF PIPE
  2. ISOLATION VALVES ARE RECOMMENDED ON ALL INLETS AND OUTLETS
  3. IF VERTICAL DISTANCE TO BILGE IS GREATER THAN 3M CONSULT FACTORY

NOTE: CONNECTION SCHEDULE IS THE ACTUAL CONNECTION SIZE TO THE UNIT. THE PIPING SCHEDULE IS THE RECOMMENDED PIPE RUN SIZING FOR BEST FLOW.

NO.	DATE	BY	CHK'D	REVISION
M1	DEC2014	TB	DCD	FOR SUBMISSION

REFERENCE DRAWINGS	DWG NO.
--------------------	---------

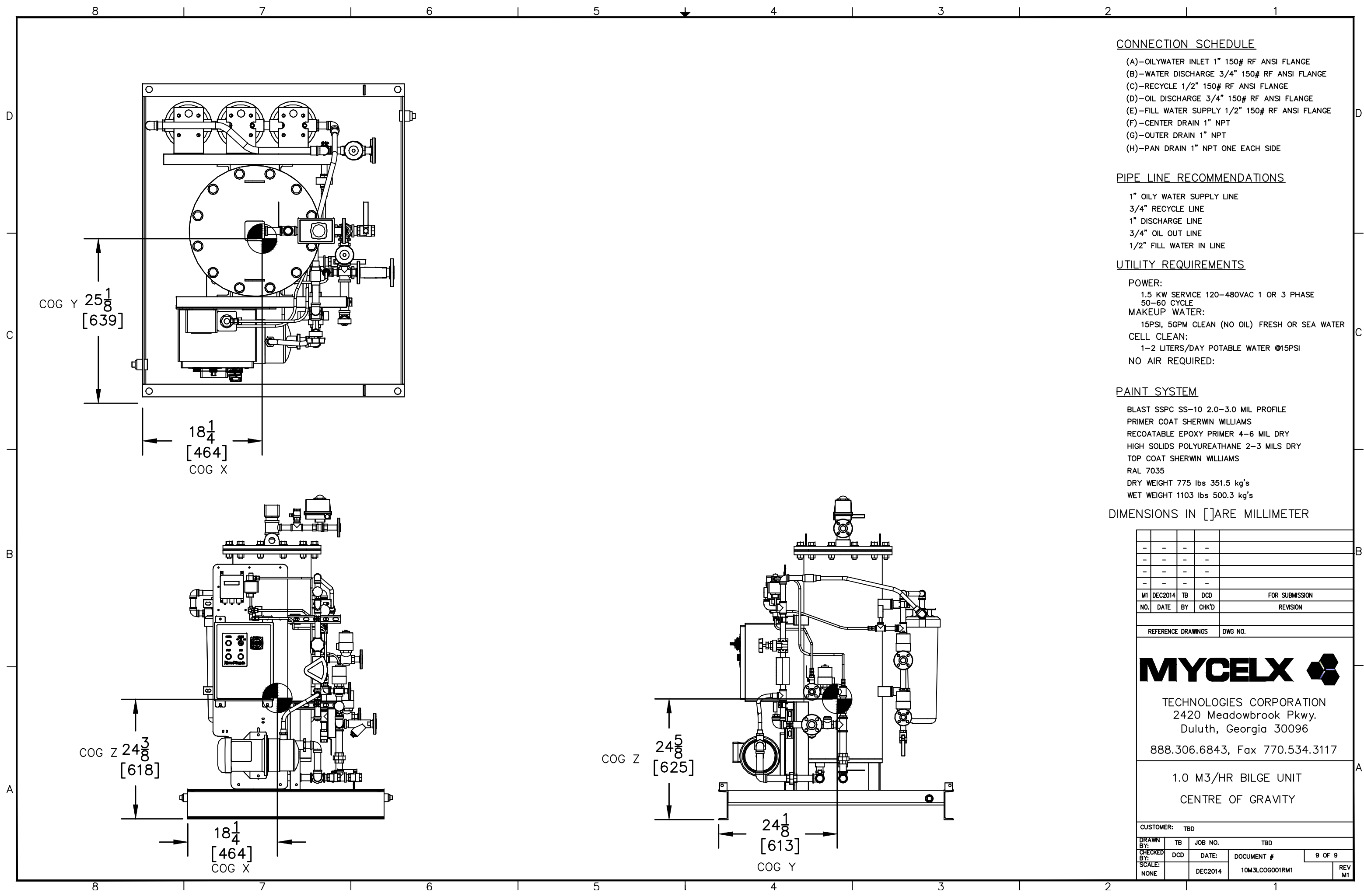
**MYCELX** 

TECHNOLOGIES CORPORATION  
 2420 Meadowbrook Pkwy.  
 Duluth, Georgia 30096  
 888.306.6843, Fax 770.534.3117

**1.0 M3/HR BILGE UNIT  
 INSTALLATION**

CUSTOMER: TBD				
DRAWN BY:	TB	JOB NO.	-	
CHECKED BY:	DCD	DATE:	DOCUMENT #	8 OF 8
SCALE:	NONE	DEC2014	10M3INS001RM1	REV M1





**CONNECTION SCHEDULE**

- (A)-OILY WATER INLET 1" 150# RF ANSI FLANGE
- (B)-WATER DISCHARGE 3/4" 150# RF ANSI FLANGE
- (C)-RECYCLE 1/2" 150# RF ANSI FLANGE
- (D)-OIL DISCHARGE 3/4" 150# RF ANSI FLANGE
- (E)-FILL WATER SUPPLY 1/2" 150# RF ANSI FLANGE
- (F)-CENTER DRAIN 1" NPT
- (G)-OUTER DRAIN 1" NPT
- (H)-PAN DRAIN 1" NPT ONE EACH SIDE

**PIPE LINE RECOMMENDATIONS**

- 1" OILY WATER SUPPLY LINE
- 3/4" RECYCLE LINE
- 1" DISCHARGE LINE
- 3/4" OIL OUT LINE
- 1/2" FILL WATER IN LINE

**UTILITY REQUIREMENTS**

- POWER:
  - 1.5 KW SERVICE 120-480VAC 1 OR 3 PHASE
  - 50-60 CYCLE
- MAKEUP WATER:
  - 15PSI, 5GPM CLEAN (NO OIL) FRESH OR SEA WATER
- CELL CLEAN:
  - 1-2 LITERS/DAY POTABLE WATER @15PSI
- NO AIR REQUIRED:

**PAINT SYSTEM**

- BLAST SSPC SS-10 2.0-3.0 MIL PROFILE
- PRIMER COAT SHERWIN WILLIAMS
- RECOATABLE EPOXY PRIMER 4-6 MIL DRY
- HIGH SOLIDS POLYUREATHANE 2-3 MILS DRY
- TOP COAT SHERWIN WILLIAMS
- RAL 7035
- DRY WEIGHT 775 lbs 351.5 kg's
- WET WEIGHT 1103 lbs 500.3 kg's

DIMENSIONS IN [ ] ARE MILLIMETER

-	-	-	-	
-	-	-	-	
-	-	-	-	
M1	DEC2014	TB	DCD	FOR SUBMISSION
NO.	DATE	BY	CHK'D	REVISION
REFERENCE DRAWINGS				DWG NO.
<b>MYCELX</b>				
TECHNOLOGIES CORPORATION 2420 Meadowbrook Pkwy. Duluth, Georgia 30096 888.306.6843, Fax 770.534.3117				
1.0 M3/HR BILGE UNIT CENTRE OF GRAVITY				
CUSTOMER: TBD				
DRAWN BY:	TB	JOB NO.	TBD	
CHECKED BY:	DCD	DATE:	DOCUMENT #	9 OF 9
SCALE:	NONE	DEC2014	10M3LCOG001RM1	REV M1

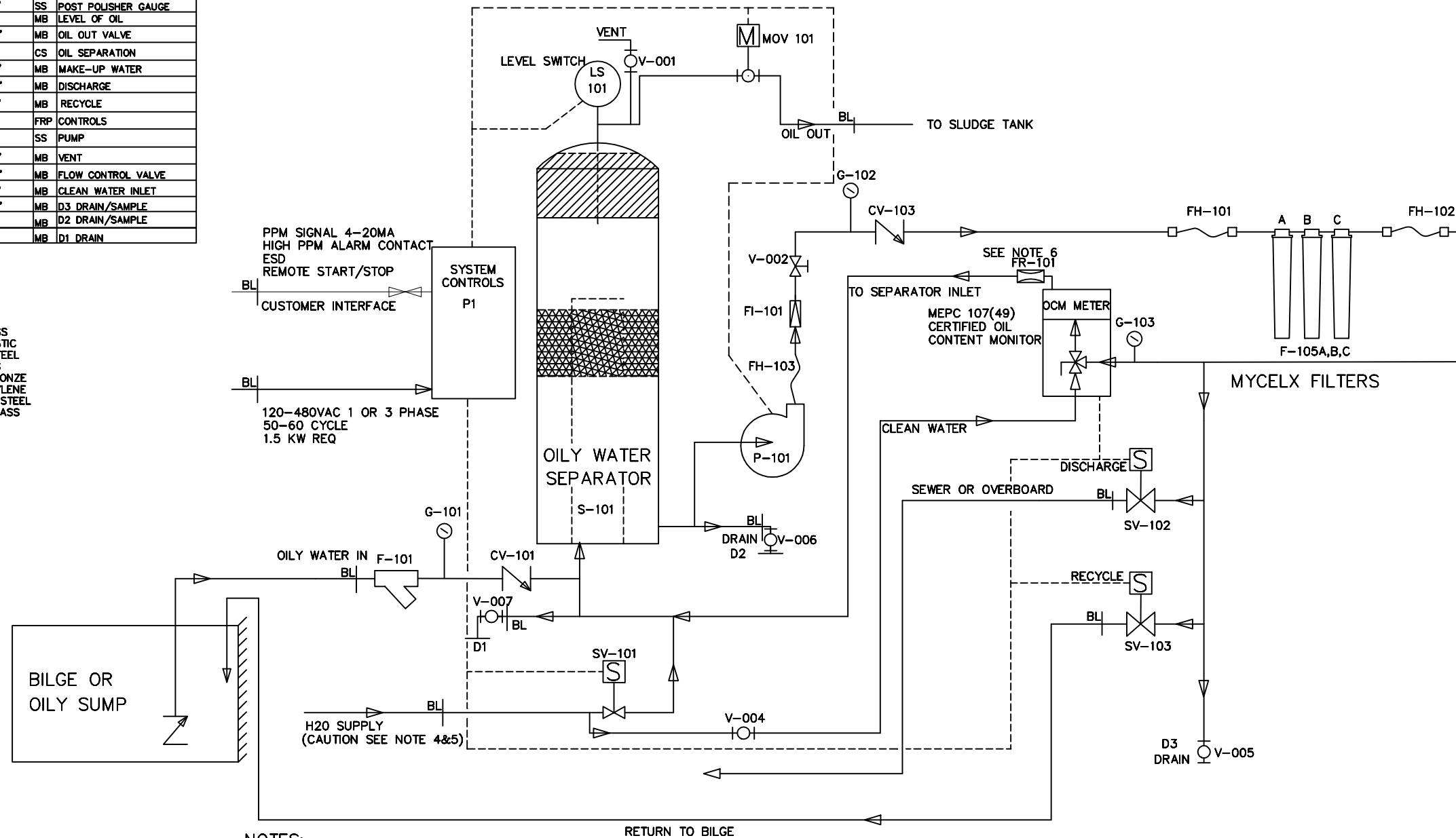
VALVE & COMPONENT SCHEDULE				
MARK	DESCRIPTION	1.0M3/HR	MAT	USE
CV-101	CHECK VALVE	1"	MB	INLET CHECK
CV-103	CHECK VALVE	3/4"	MB	DISCHARGE CHECK
F-101	Y STRAINER	1"	MB	PRE FILTER
F-105	4.5X20" FILTER	3/4"	PP	POST POLISHING
FH-101	FLEX HOSE	3/4" X 24"	SS	FILTER CONNECTION
FH-102	FLEX HOSE	3/4" X 24"	SS	FILTER CONNECTION
FH-103	FLEX HOSE	3/4" X 24"	SS	PUMP CONNECTION
FI-101	FLOW INDICATOR	3/4"	MB	VISUAL FLOW INDICATION
FR-101	FLOW RESTRICTOR	N/A	PP	OCM FLOW REDUCTION
G-101	VACUUM GAUGE	1/4"	SS	INLET SUCTION VACUUM
G-102	PRESSURE GAUGE	1/4"	SS	PUMP DISCHARGE GAUGE
G-103	PRESSURE GAUGE	1/4"	SS	POST POLISHER GAUGE
LS-101	OIL LEVEL SWITCH	2"	MB	LEVEL OF OIL
MOV-101	MOTOR OPERATED VALVE	3/4"	MB	OIL OUT VALVE
S-101	SEPARATOR VESSEL	N/A	CS	OIL SEPARATION
SV-101	SOLENOID VALVE	1/2"	MB	MAKE-UP WATER
SV-102	SOLENOID VALVE	3/4"	MB	DISCHARGE
SV-103	SOLENOID VALVE	1/2"	MB	RECYCLE
P1	CONTROL PANEL	N/A	FRP	CONTROLS
P-101	MAIN PROCESS PUMP	1"	SS	PUMP
V-001	BALL VALVE	1/2"	MB	VENT
V-002	GATE VALVE	3/4"	MB	FLOW CONTROL VALVE
V-004	BALL VALVE	1/2"	MB	CLEAN WATER INLET
V-005	BALL VALVE	3/4"	MB	D3 DRAIN/SAMPLE
V-006	BALL VALVE	1"	MB	D2 DRAIN/SAMPLE
V-007	BALL VALVE	1"	MB	D1 DRAIN

LEGEND:  
 FRP - FIBERGLASS REINFORCED PLASTIC  
 CS - CARBON STEEL  
 FC - FIBERGLASS  
 MB - MARINE BRONZE  
 PP - POLYPROPYLENE  
 SS - STAINLESS STEEL  
 BR - YELLOW BRASS

**LEGEND**

- BALL VALVE
- ⊗-GATE VALVE
- ≡-FLOW RESTRICTOR
- ⊏-FILTER/STRAINER
- ⊞-SOLENOID OPERATED VALVE
- ⊞-FLOW INDICATOR GPM& LPM
- ∟-CHECK VALVE
- ~-FLEX HOSE
- V-BALL VALVE
- BL-BATTERY LIMITS
- SV-SOLENOID VALVE
- S-SEPARATOR
- CV-CHECK VALVE
- P-PUMP
- LS-LEVEL SWITCH
- OCM-OIL CONTENT MONITOR
- LT-LEVEL TRANSMITTER
- F-FILTER/STRAINER
- FR-FLOW RESTRICTING ORIFICE
- FH-FLEX HOSE

PROCESS PUMP MOTOR DATA  
 NEMA 56 (IP55)  
 1.15 SERVICE FACTOR  
 50 DEG C AMBIENT TEMP  
 CLASS F INSULATION  
 303 STAINLESS STEEL SHAFT



**NOTES:**

- 1) SEPARATOR VESSEL IS CARBON STEEL CONSTRUCTION
- 2) TUBING & TUBE FITTINGS ARE POLYETHYLENE
- 3) ALL PIPE AND FITTINGS ARE RED BRASS AND BRONZE
- 4) FLEX HOSE IS NYLON W/STAINLESS BRAIDED JACKET
- 5) IF H2O IS FROM A POTABLE SUPPLY AN ANTI-SIPHON BACK FLOW PREVENTER MUST BE INSTALLED ON THE INLET OF SOV 101
- 6) IF THE CLEAN WATER SUPPLY PRESSURE IS GREATER THAN 15 PSIG, A PRESSURE REGULATOR SHOULD BE INSTALLED ON THE INLET OF SOV 101
- 7) FR-101 IS A FLOW RESTRICTION THAT IS PLACED INSIDE THE FITTING ON THE OUTLET OF THE OCM METER AND IS NOT VISIBLE FROM THE OUTSIDE.

M1	DEC2014	TB	DCD	FOR SUBMISSION
NO.	DATE	BY	CHK'D	REVISION

REFERENCE DRAWINGS      DWG NO.

**MYCELX**

TECHNOLOGIES CORPORATION  
 2420 Meadowbrook Pkwy.  
 Duluth, Georgia 30096  
 888.306.6843, Fax 770.534.3117

1.0 M3/HR BILGE UNIT  
 P&ID

CUSTOMER: TBD

DRAWN BY:	TB	JOB NO.	TBD
CHECKED BY:	DCD	DATE:	DEC2014
SCALE:	NONE	DOCUMENT #	10M3PID001RM1
			1 OF 1
			REV M1

