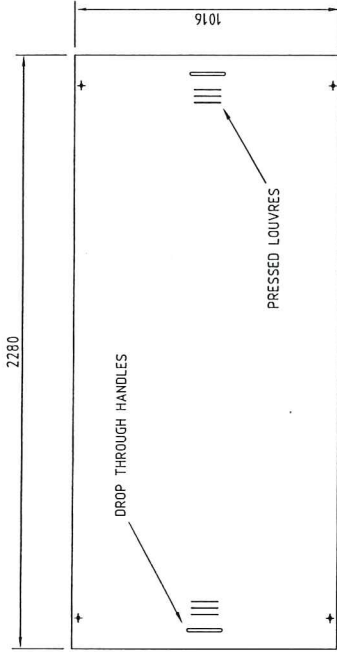


PLAN VIEW



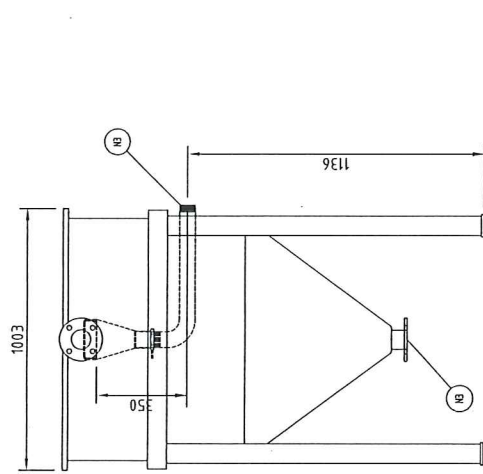
LOOSE FITTING LID

MATERIAL LIST

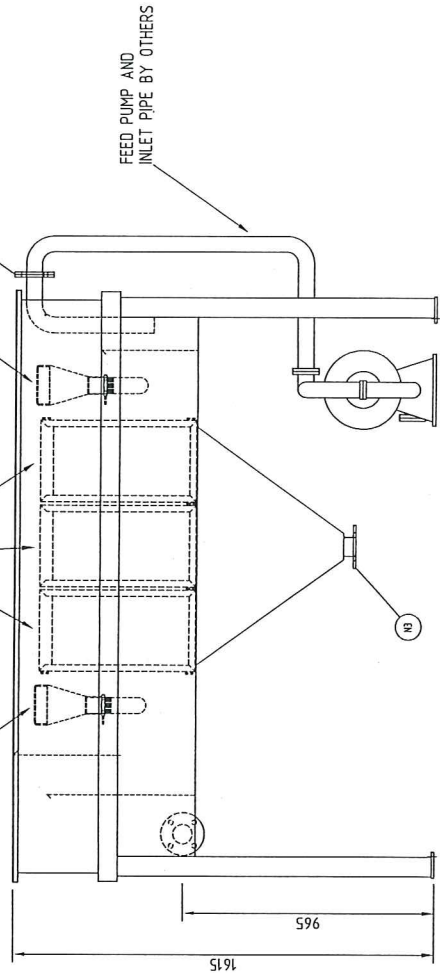
LID	15MM 304 GRADE STAINLESS STEEL
BODY	2MM 304 GRADE STAINLESS STEEL
LEGS	STAINLESS STEEL ANGLE 75 X 75 X 10
PIPE	ANSI B36.19 SCH30 MATL ASTM A312 TP 304
18 90° BW ELBOWS	ANSI B16.9 SCH30 MATL ASTM A312 TP 304

NOZZLE SCHEDULE

NOZZLE MARK No	No REQD	SERVICE	SIZE	RATING	REMARKS
N1	1	WATER INLET	65	TABLE E	FLANGED
N2	1	WATER OUTLET	65	TABLE E	FLANGED
N3	2	OIL OUTLETS	50	150LB	MALE BSP
N4	1	SOLIDS OUTLET	65	TABLE E	FLANGED



END VIEW



SIDE VIEW

NOTES

- UNLESS OTHERWISE STATED, ALL DIMENSIONS ARE INTERNAL (mm)
- ALL WELDS, CONNECTIONS & JOINTS TO BE FULLY WELDED (WATER TIGHT)
- TANK & WEBS TO BE FABRICATED FROM 304 STAINLESS STEEL
- METAL THICKNESS TO BE 2mm
- ALL WELDS TO BE FULL PENETRATION WELDED OVERLAP
- ALL WELDS TO BE FULL PENETRATION WELDED OVERLAP
- THE LID IS 15mm THICK AND IS TO BE LOOSE FITTING (LOUVER VENTED)
- ALL WELDS ARE TO BE FULL PENETRATION WELDS, EXCLUDING STITCH WELDS.
- GENERAL TOLERANCES TO BE ±.3mm UNDO.
- ALL TANKS TO BE SUBJECTED TO A STATIC HYDRAULIC TEST (24 HOURS)
- WELDS TO BE PASSED INTERNALLY & EXTERNALLY
- ALL WELDS TO BE FULL PENETRATION WELDED OVERLAP
- ALL WELDS TO BE FULL PENETRATION WELDED OVERLAP
- SOME ITEMS NOT SHOWN IN DIFFERENT VIEWS FOR CLARITY.

DRAWN	S. BROWN	CHECKED	S. BROWN	APPROVED	
DATE		DATE		DATE	

UNAPPROVED USE, REPRODUCTION OR MANUFACTURE IN WHOLE OR IN PART WITHOUT THE WRITTEN PERMISSION OF BALDWIN INDUSTRIAL SYSTEMS PTY LTD.

BALDWIN INDUSTRIAL SYSTEMS PTY LTD
 10 BALDWIN CT, CLAYTON VIC 3168 AUSTRALIA
 PHONE: 03 9555 4444 FAX: 03 9555 4444 Email: info@baldwin.com.au

CLIENT: BALDWIN INDUSTRIAL SYSTEMS
 PROJECT: COALESCING PLATE SEPARATOR STANDARD ASSEMBLY
 TITLE: MODEL BSV-96-9 GENERAL ARRANGEMENT FOR INFORMATION
 SHEET 1 OF 1
 DRAWING NO: BSV-96-9-02
 SCALE: STOCK
 REV: A

