



redemperor[®]
fire + civil + plumbing

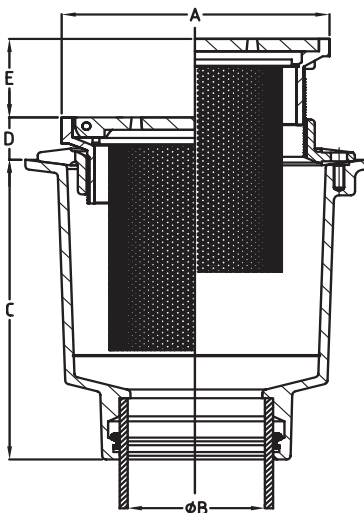
Square Bucket Trap Combination

(Dual Strainer) - Deep

Specification Data Sheet



Typical Dimension



Product Selection Guide:

Code	Grate Style	Grate Material	Body Mat	Top (A)	Outlet (B)	Body Height (C)	Grate Height (D)	Adj (E)	Connection Type
DB4D08SX	Square	Stainless Steel	CI	200	100	235	34	60	PVC/HDPE
DB4D12SX	Square	Stainless Steel	CI	300	100	235	34	60	PVC/HDPE

DB4D08SX

Bucket Floor Trap Combo - Cast Iron 100PVC Deep Body and Stainless Steel Square Grate 200mm and Stainless Steel Dual Strainer

DB4D12SX

Bucket Floor Trap Combo - Cast Iron 100PVC Deep Body and Stainless Steel Square Grate 300 and Stainless Steel Dual Strainer

Specifications

Cast stainless steel square floor drain assembly, threaded BSP with stainless steel lock down allen key screws, machined/finished surface, stainless steel hinge pins, load rated to Class C with grey enamel coated cast iron vertical deep body with reversible membrane collar, weep holes stainless steel lock down bolts and 304 stainless steel primary strainer basket and secondary 304 stainless steel disc strainer.

Features

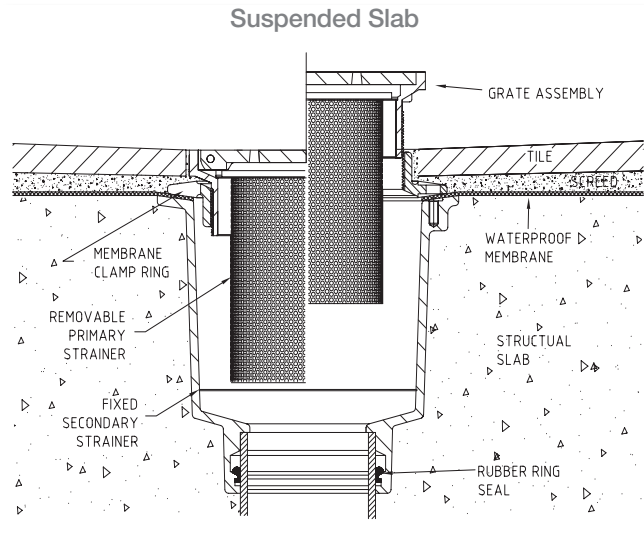
- The first floor drain arrestor to meet WSAA product specification requirements WSA PS 841 - Floor waste arrestor
- Complies with AS/NZS 4994:1998 Discharge of commercial and industrial waste water to sewer
- Stainless steel grate and dual strainer
- Cast Iron as per BS 1452/Grade 180 and AS 1830/180
- Complies with AS 3996 Class C and EN1253 Class C load rating
- Ideal for commercial kitchens, food preparation areas, shopping centres and health care facilities



A family
owned
Australian
business

410 Victoria Rd, Malaga, WA 6090
Within Australia: **1300 514 074**
Outside Australia: P: +61 (0)8 9249 5900
F: +61 (0)8 9249 5916
sales@galvinengineering.com.au
www.red-emperor.com.au

Typical Installation



Flow Rate Guide (Litres/Second):

Grate Size	Pressure head mm of water		
	20mm	30mm	40mm
200 x 200	3.9	6.4	7.4
300 x 300	4.7	9.1	13.9

Maintenance

Regular maintenance should be carried out in accordance with installation and troubleshooting guides provided with the product, the relevant Australian Standards, local authorities and state codes.

Warranty

Red Emperor products are covered under our Manufacturer's Warranty at www.galvinengineering.com.au. Red Emperor products must be installed in accordance with the installation instructions and in accordance with AS3500, PCA, relevant Australian Standards and local authorities applicable to product being installed. Water and electrical supply conditions must also comply to the applicable national and/or state standards, failing to comply with these provisions may void the product warranty and affect performance of the product.

Whilst all reasonable care has been taken in compiling the information in this document, the designs, dimensions and products shown are indicative only and should not be relied upon without our prior approval. Due to our policy of continuous development, we reserve the right to alter any details of specifications or products without notice. All information, drawings, technical specifications and product designs remains the property of Galvin Engineering Pty Ltd.