

Waste Water Recycling Systems

Domino WWR - Micro



PUBLICATION DATE

JULY 2018

Waste Water Recycling Systems

Domino WWR Micro

Overview

The Domino WWR-Micro is an affordable entry level waste water recycler. The Micro is ideal for use in many industrial applications. The Micro uses a combination of an ICSEP and bag filtration technology to achieve particulate removal down to 5 micron level.

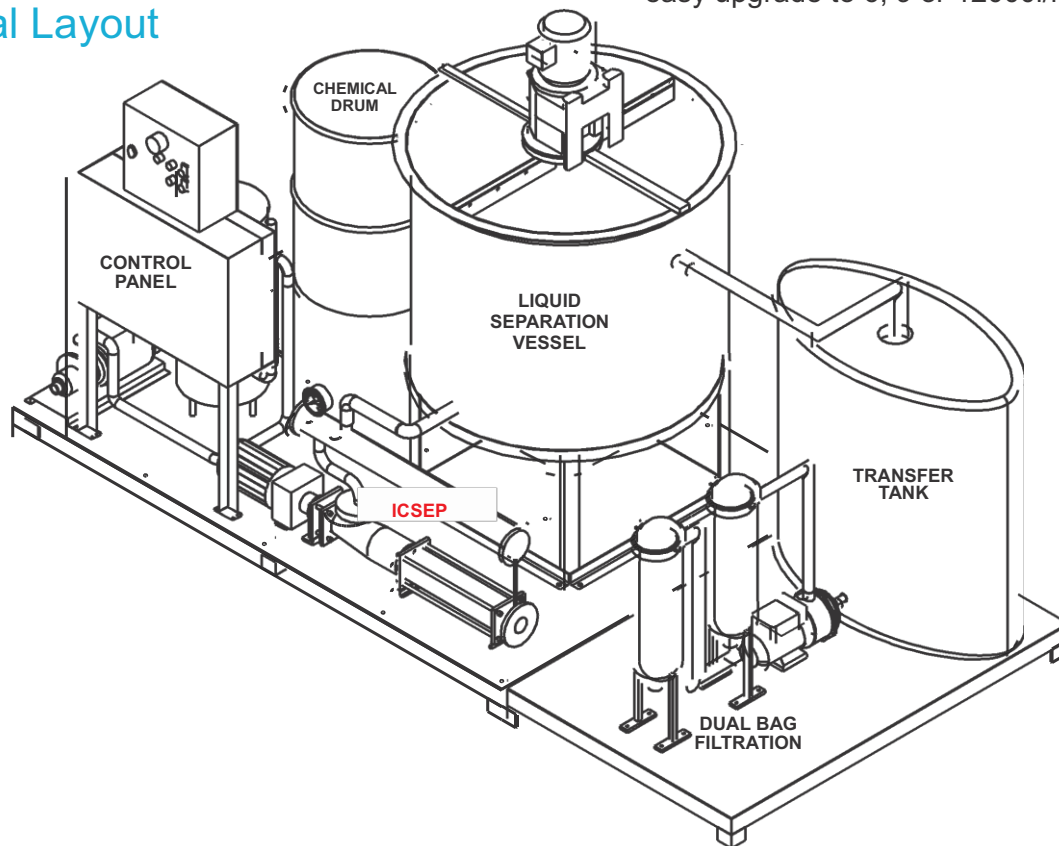
Applications

- Truck & machinery wash water reclaim.
- Hose down areas in factories, workshops and maintenance centres.
- Power Stations, Mine Sites, Refineries and petrochemical plants.
- Oil Tank Farms and Fuel Depots.

Features

- Filtration down to 5 micron removes most hydrocarbons & dirt etc.
- Recycled water suitable for use with hand held pressure washers
- Very low chemical requirements compared to competitor solutions. Save up to 80% on chemical costs.
- Easy maintenance, low cost bag filtration system.
- Scalable. Base unit can process up to 3000l/hour easy upgrade to 6, 9 or 12000l/h

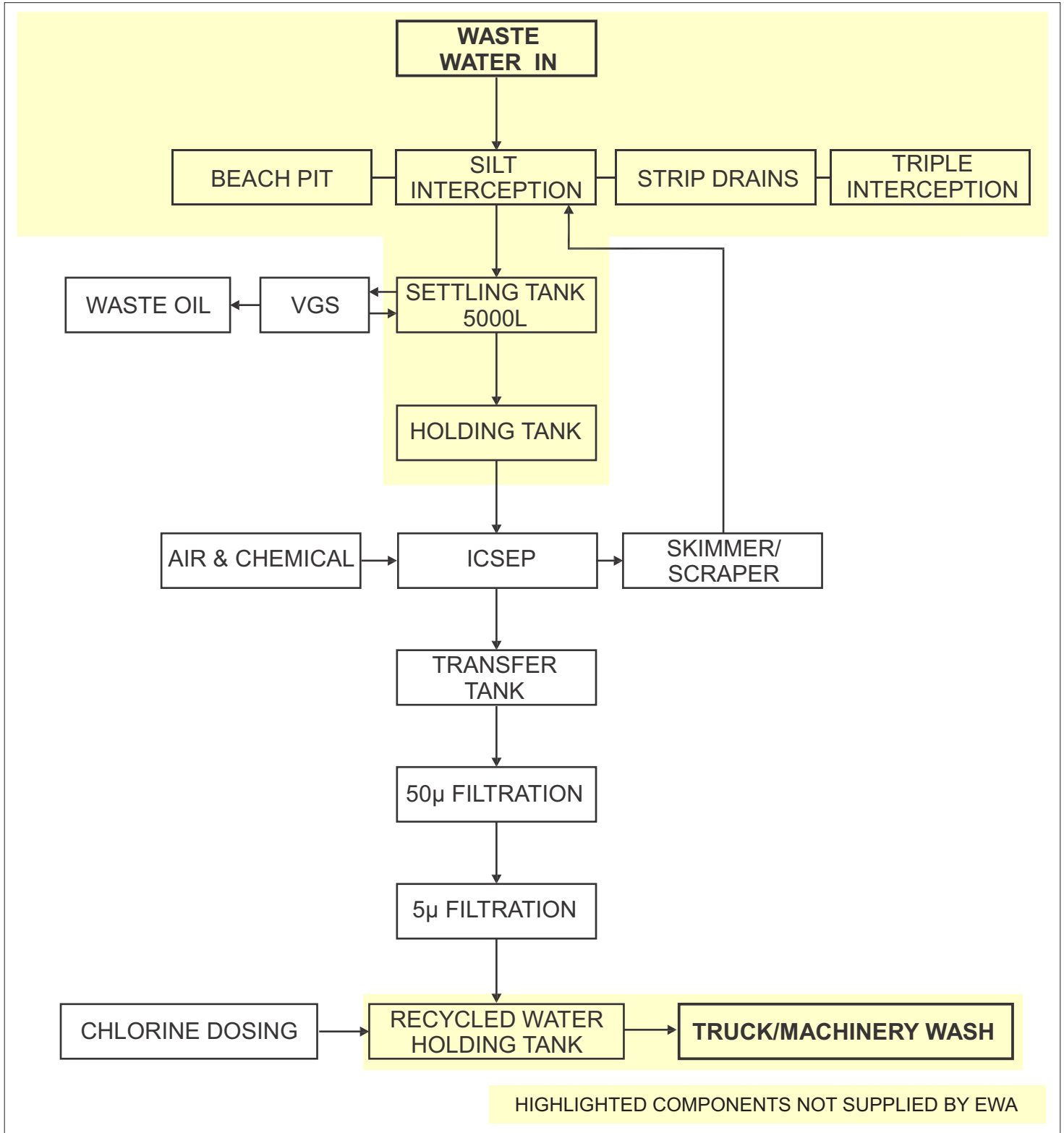
General Layout





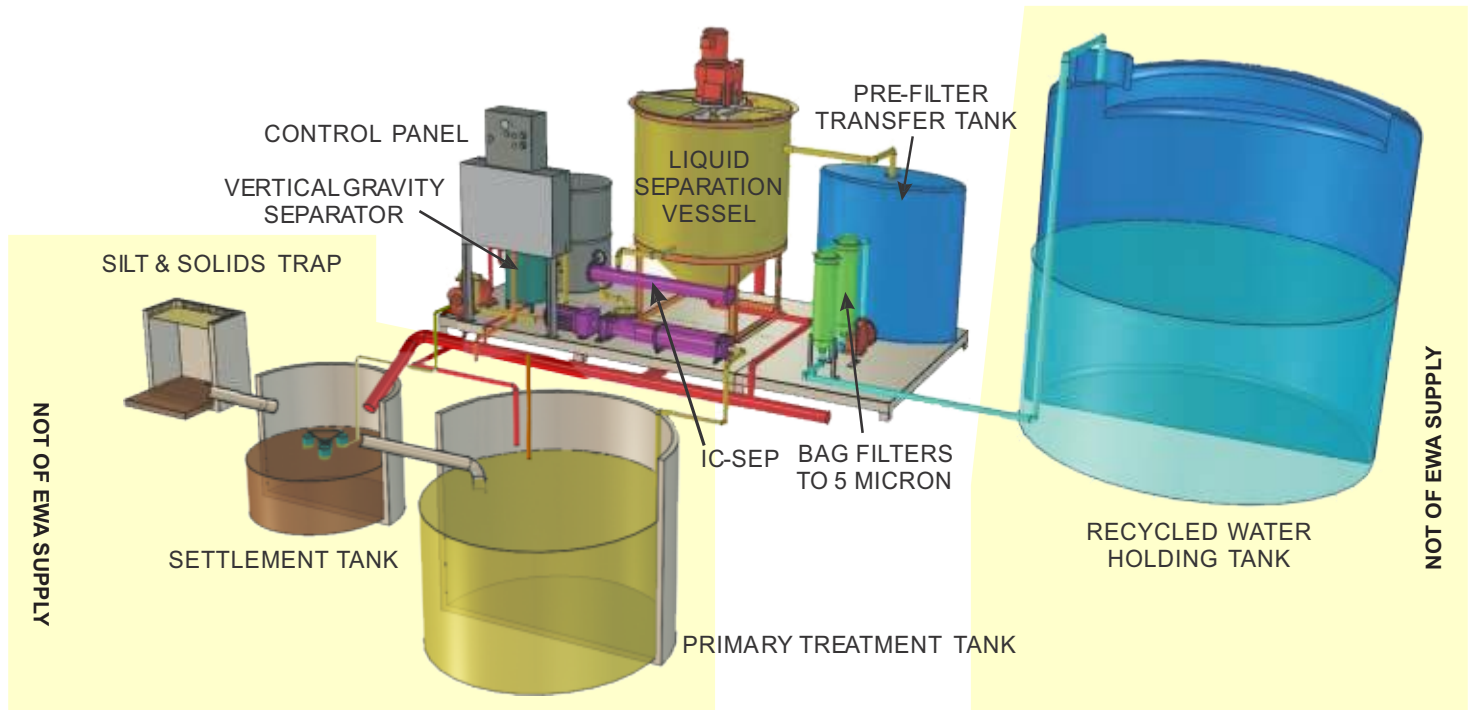
Domino WWR Micro

Domino WWR-Micro Process Diagram



Domino WWR Micro

Typical Domino WWR-Micro Installation



How it works

1. Waste water enters the system through the silt and solids trap.
2. As the solids trap fills water weirs over into the settlement tank.
3. The settlement tank fills until it also weirs into the primary treatment tank.
4. The water in the primary treatment tank is simultaneously treated in 2 ways:
 - a. Oily water is drawn from the surface of the tank by a floating skimmer which is then fed through a vertical gravity separator (VGS) before returning to the primary treatment tank. Oils and floating solids are captured in the VGS for later disposal.
 - b. Cleaner water is simultaneously drawn from the middle of the tank into the ICSEP where a flocculent is added and the induced cyclonic air infusion process is commenced before transfer of the water into the liquid separation vessel (LSV).
5. The surface of the water in the LSV is “scraped” to remove suspended solids and oils displaced by the ICSEP. Clean water is drawn off into the pre-filtration holding tank.
6. Water from the pre-filtration holding tank is pumped through a pair of bag filters removing contaminants down to 5 micron.
7. Clean water ready for use is stored in the recycled water holding tank.
8. Water in the recycled water tank is monitored and dosed with chlorine to maintain water quality and ensure OHS requirements are met.



Domino WWR Micro

Typical Domino WWR-Micro Installation

