

Special developer infrastructure contributions METRONET development precincts

Background

The Corporation established Special Developer Contribution schemes covering five METRONET Development Precincts- Kelmscott, Meltham, Bennett Springs, Redcliffe, and Morley.

Developers of residential and commercial properties in these METRONET Development Precinct areas are required to pay a Special Developer Infrastructure Contribution in addition to the Standard Infrastructure Contribution. The Contribution is to offset the cost of the Corporation upgrading and existing reticulation networks (water and sewer) to accommodate redevelopment in the precinct.

The Contribution is payable on all developments and is applicable at subdivision and building stage. It is not subject to the GST.

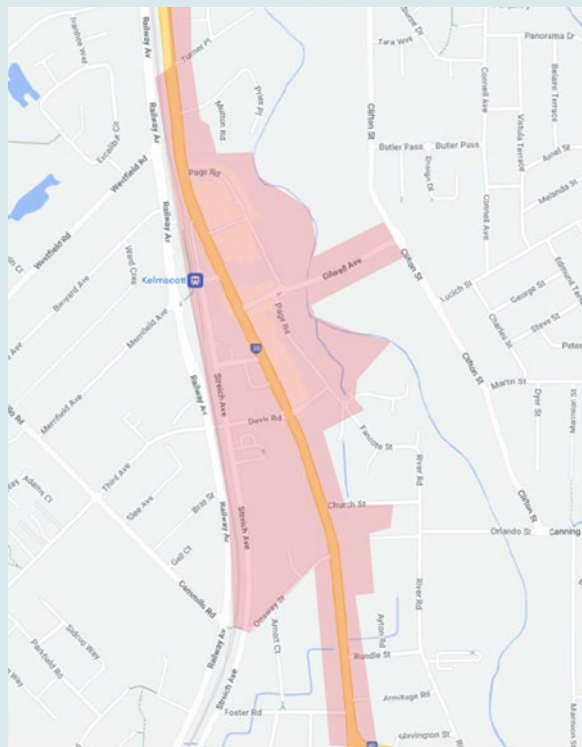
If you think your development may be within the boundary of this Contribution area, please contact us for further information by emailing land.servicing@watercorporation.com.au or calling (08) 9420 2099.

Further information is available on our website at Watercorporation.com.au > Developing & building > Subdividing > Fees and Charges > [Special Developer Infrastructure Contributions](#)

Maps of the areas where the contributions apply.

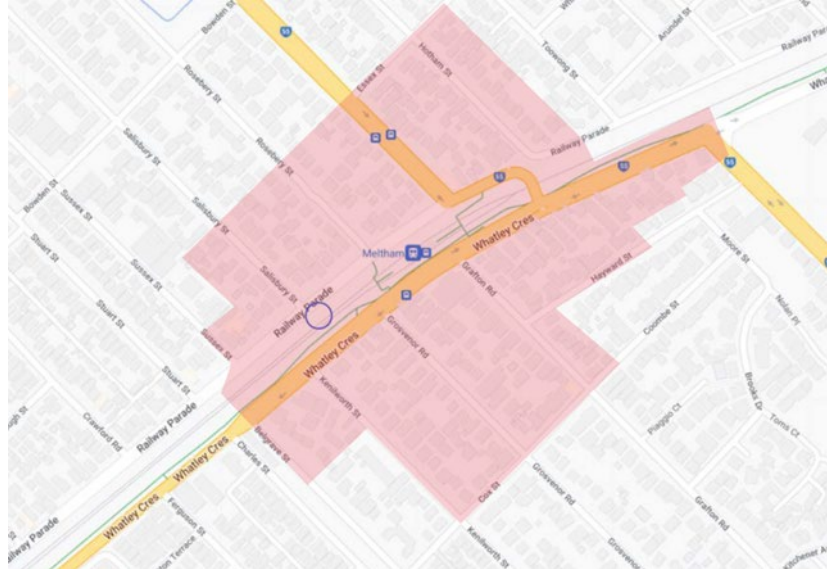
Map of the area where the special developer infrastructure contribution applies

Kelmscott

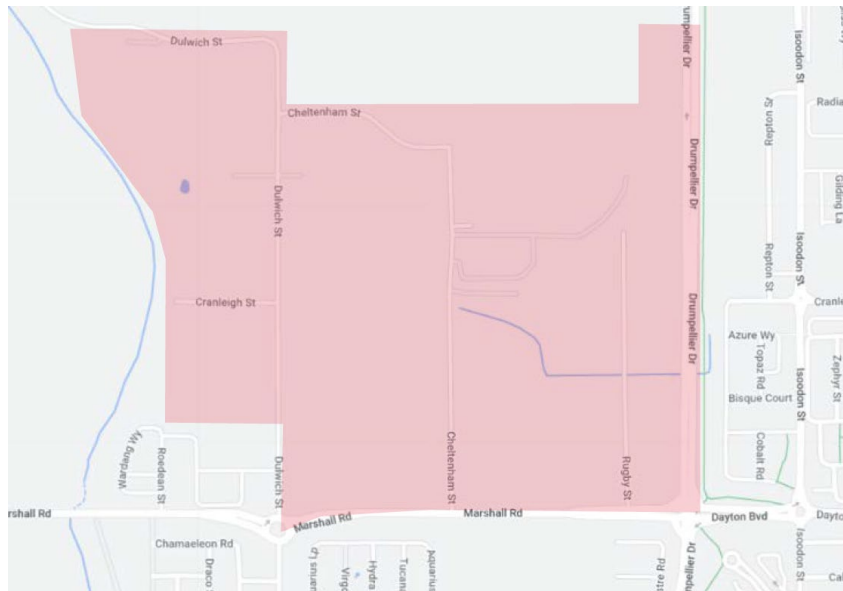


Special developer infrastructure contributions METRONET development precincts

Meltham

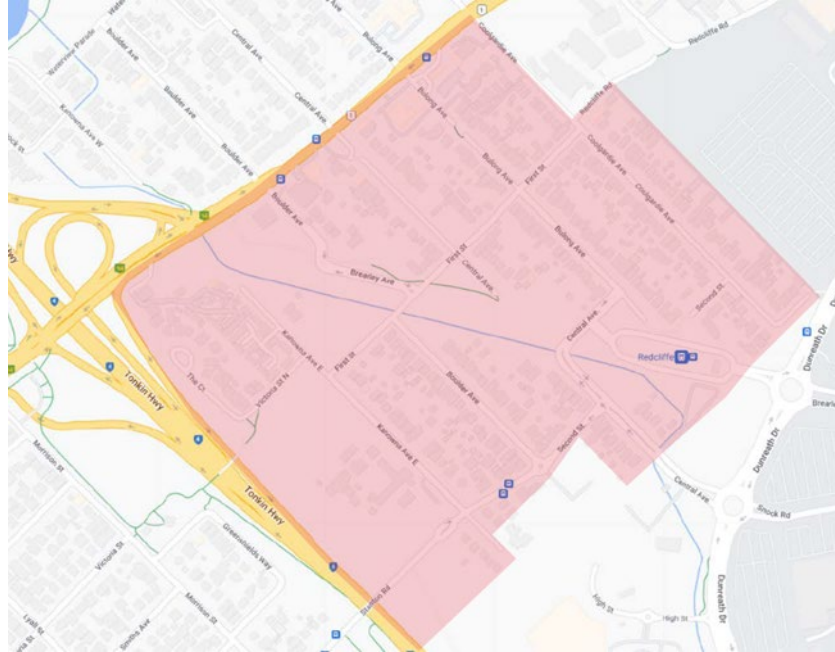


Bennet Springs



Special developer infrastructure contributions METRONET development precincts

Redcliff



Morley

