

Building Services fees and charges

2022-23

Development Services

Single residential building application fees

Single residential building application (state-wide)	
Single residential application fee	\$108.26

Standard fees for a new single residential building authorisation:	
Single residential application fee:	\$108.26
Sewer connection fee:	\$34.44
Water Supply activation fee:	\$199.93
	<u>\$342.63</u>

Multi residential building application fees

Multi residential building application (state-wide)	
Multi residential building application fee	\$198.01

Non-residential & Mixed-Use building application fees

Non-residential & Mixed-Use building application (state-wide)	
Non-residential & Mixed-Use building application fee	\$254.13

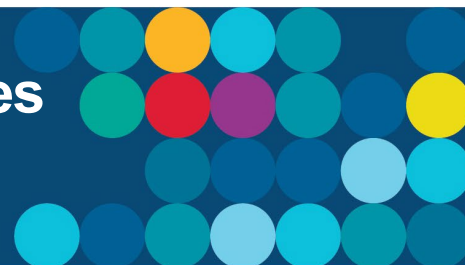
Water Supply connections (including fire services)

Service size	Standard connection fee
20mm (Domestic use only)	\$1,696.26
25mm	\$2,173.62
40mm	\$3,844.38
50mm	\$5,174.46
80mm	\$8,829.12
100mm	\$8,829.12
150mm	\$11,605.56

Building Services fees and charges

2022-23

Development Services



Water Supply relocations (Including fire services)

Service size	Under 500mm	Over 500mm
20mm	\$947.58	\$1,872.72
25mm	\$1,207.68	\$2,349.06
40mm	\$2,123.64	\$4,020.84
50mm	\$2,852.94	\$5,348.88
80mm	QUOTE	\$9,004.56
100mm	QUOTE	\$9,004.56
150mm	QUOTE	\$11,782.02

Note:

Metropolitan area

All connections/relocations are to be quoted in **special circumstances** (See below).

Country regions

All connections in the country regions are to be quoted.

Special circumstances

A quote is required for all water supply connections, relocations, downgrades or upgrades when special circumstances apply e.g. built up areas, special issue areas (SIA) which includes central business districts. Charges are to be assessed on a case by case basis due to costs of traffic management, access and restoration.

Water Supply meter box and cover (including fire services)

Cost of Trafficable Cast Iron Hinge box and cover	\$228.91
---------------------------------------------------	----------

*Meter box and cover is only available for service connections sizes 50mm and below.

Water Supply disconnections (including fire services)

Disconnection Fee	\$1,204.62
-------------------	------------

Water Supply sub-meters

Application Fee	\$121.08
Installation Fee	(per meter) \$189.37

Water Supply downgrades and upgrades (including fire services)

Downgrade water supply	QUOTE
Upgrade water supply	Full cost of new service (includes disconnection) Infrastructure contributions will be charged where applicable
Upgrade or relocate a Fire service	Full cost of new service. Disconnection fees also apply if the service is required in a new location.

Building Services fixed fees and charges



Sewer junctions and connections	
Sewer connection fee	\$34.44
Cut in 100mm junction**	\$882.57
Cut in 150mm junction**	\$1,081.64
Cut in junctions greater than 150mm	QUOTE

**Quotes are required where the sewer main is greater than 300mm

Building and Service enquiries

Website: www.watercorporation.com.au

Email: Building.services@watercorporation.com.au

Phone: 13 13 95